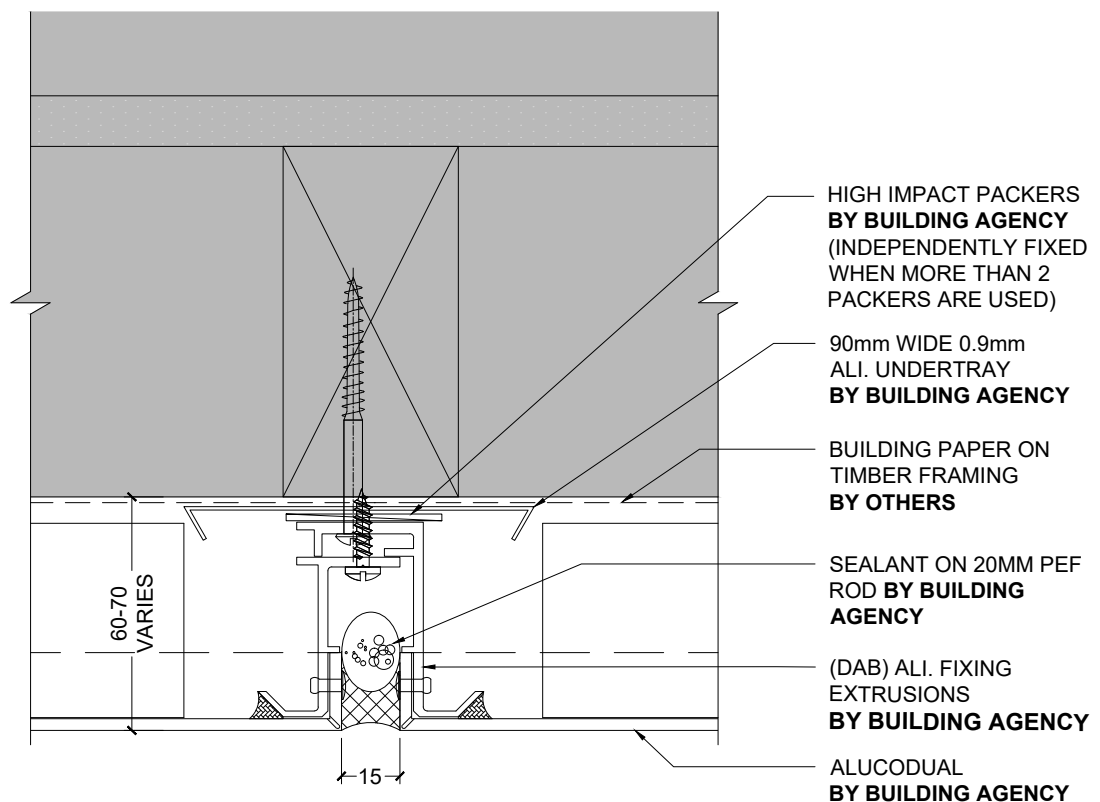


1 TYPICAL VERTICAL JOINT ON RAB (PLAN)
1:2 @ A4

NOTE: TIMBER FRAMING BY OTHERS TO BE AT 600
CTRS MAX FOR BOTH STUDS & NOGS. MAY BE
REQUIRED AT CLOSER CENTERS SUBJECT TO
ENGINEERING REQUIREMENTS

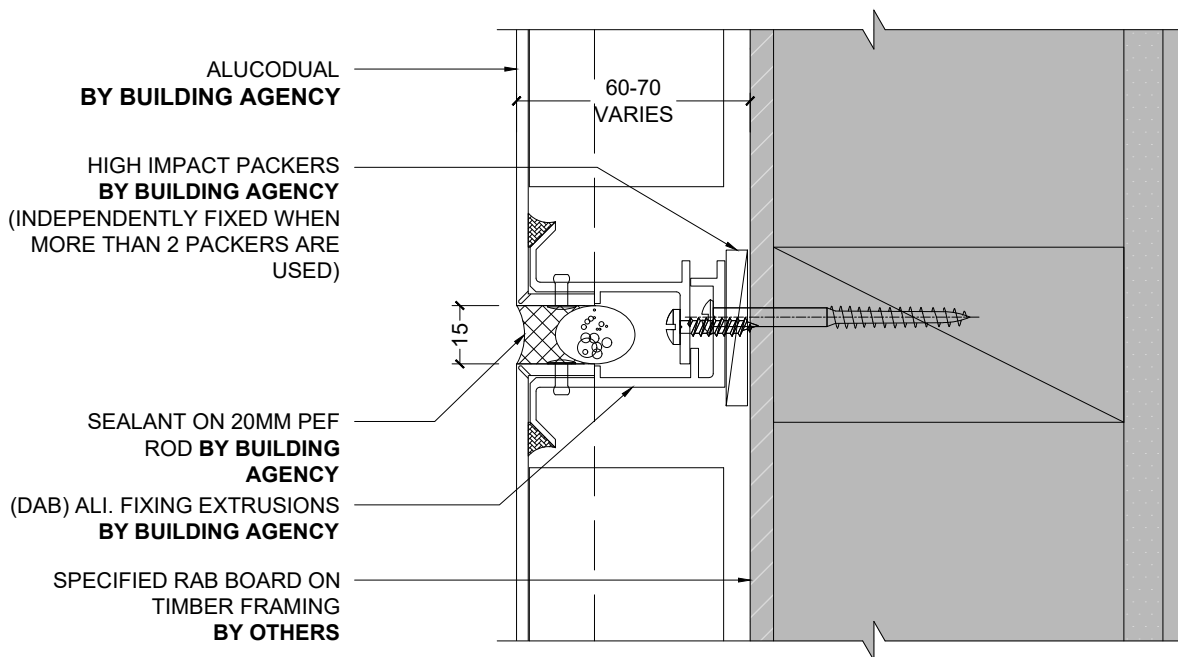
BUILDING AGENCY ALUCODUAL CLADDING (DAB) SYSTEM

NOTE: IF IT'S O PAPER IT SHOULD BE ROUT AND RETURN SYSTEM



1 TYPICAL VERTICAL JOINT ON BUILDING PAPER (PLAN)
- 1:2 @ A4

NOTE: TIMBER FRAMING BY OTHERS TO BE AT 600
CTRS MAX FOR BOTH STUDS & NOGS. MAY BE
REQUIRED AT CLOSER CENTERS SUBJECT TO
ENGINEERING REQUIREMENTS



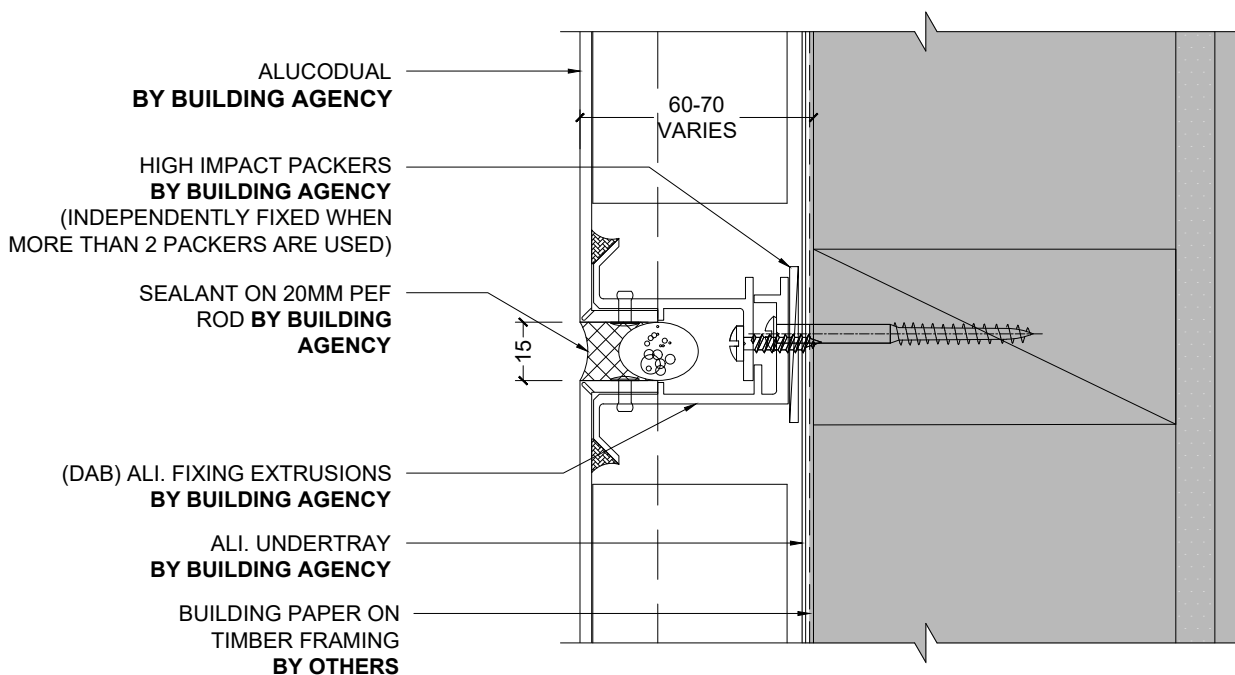
1 TYPICAL HORIZONTAL JOINT ON RAB (SECTION)
1:2 @ A4

NOTE: TIMBER FRAMING BY OTHERS TO BE AT 600
CTRS MAX FOR BOTH STUDS & NOGS. MAY BE
REQUIRED AT CLOSER CENTERS SUBJECT TO
ENGINEERING REQUIREMENTS

BUILDING AGENCY ALUCODUAL CLADDING (DAB) SYSTEM



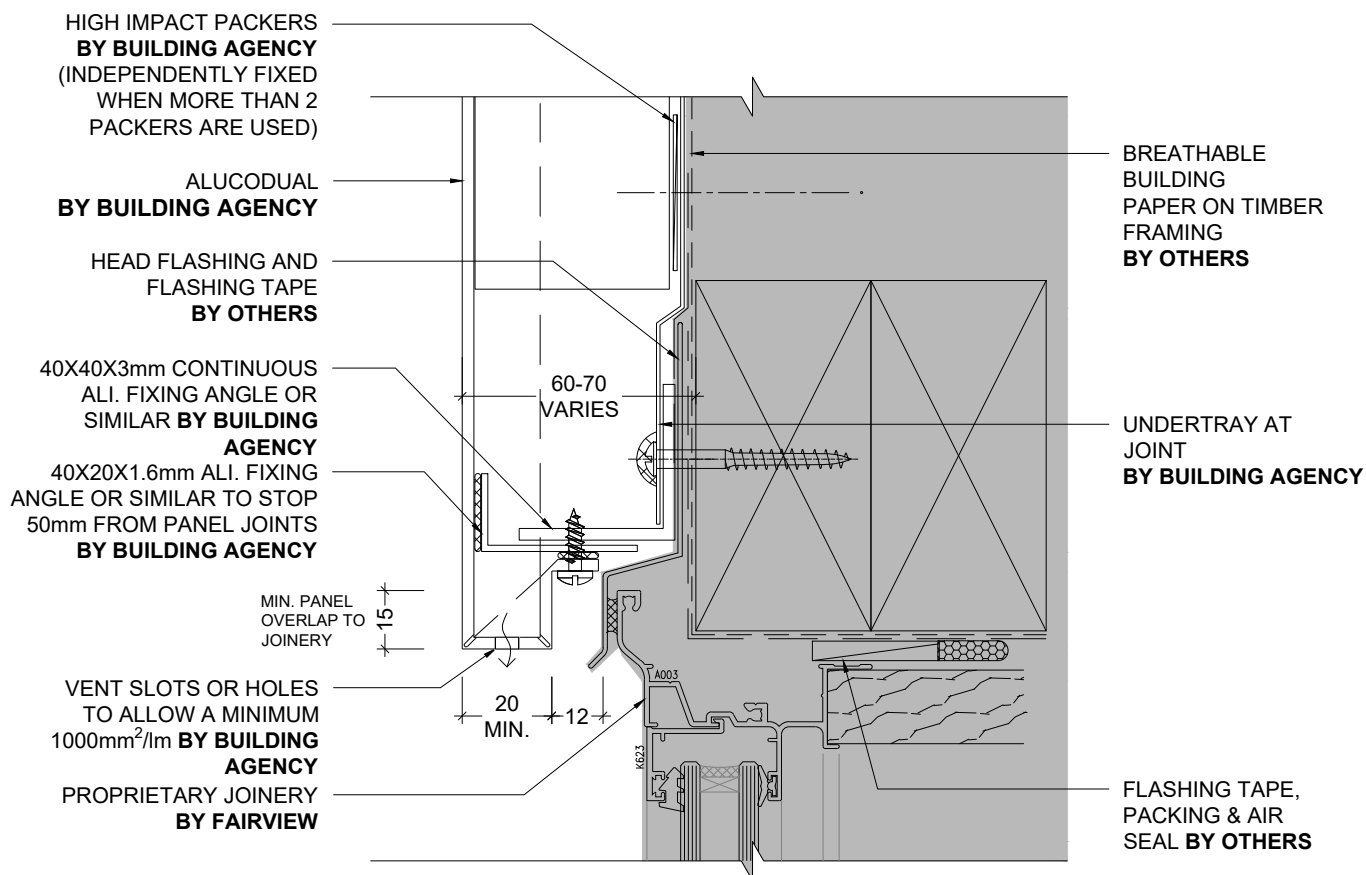
NOTE: IF IT'S O PAPER IT SHOULD BE ROUT AND RETURN SYSTEM



1 TYPICAL HORIZONTAL JOINT ON BUILDING PAPER (SECTION DETAIL)
- 1:2 @ A4

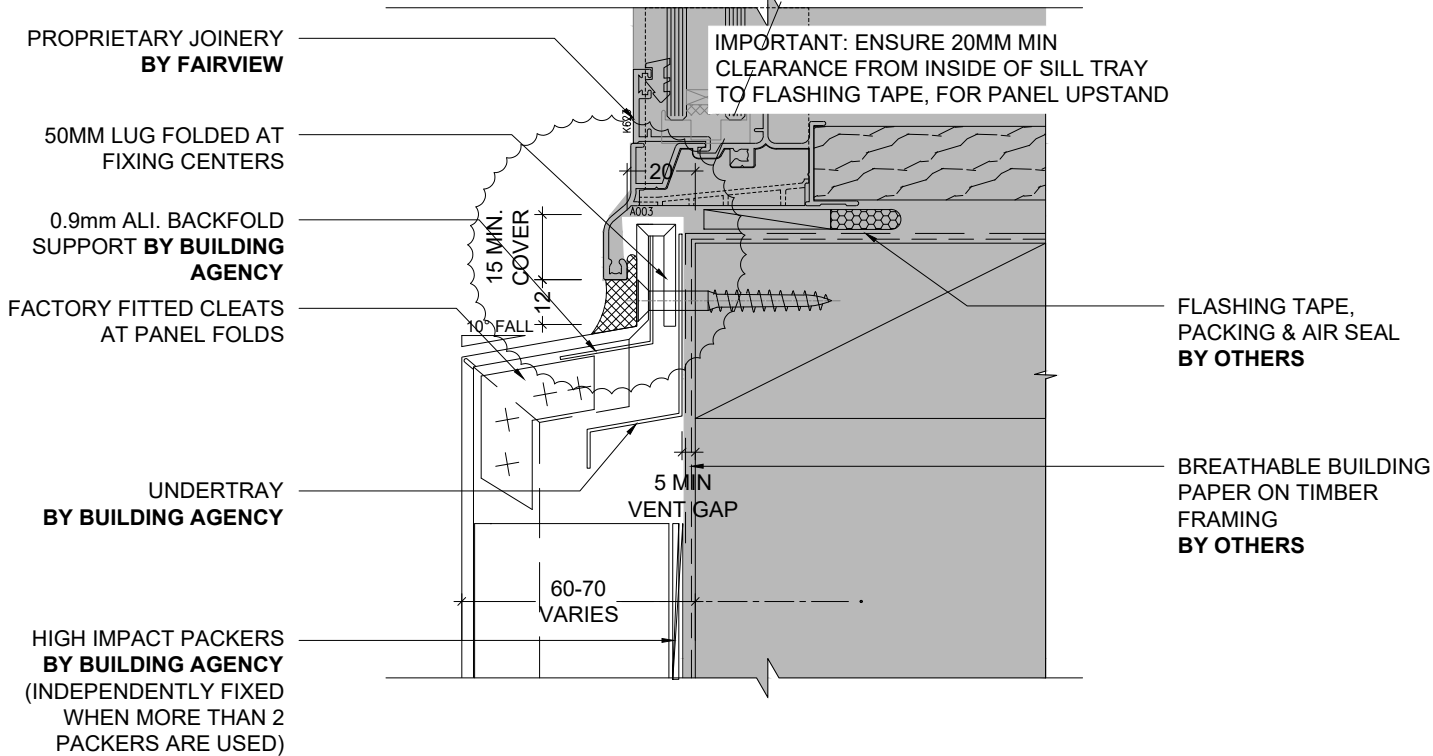
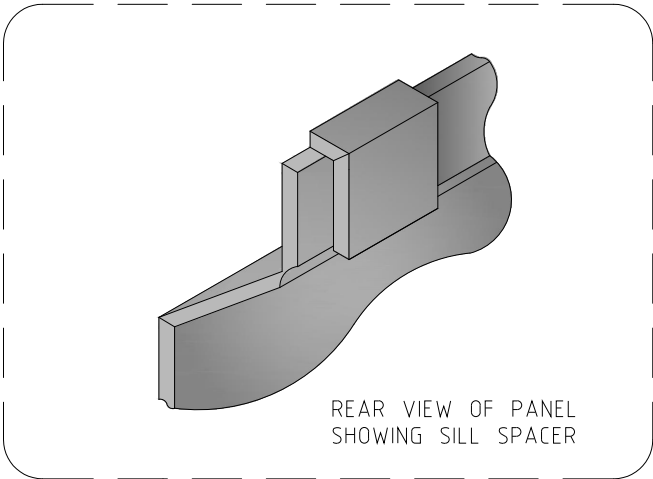
NOTE: TIMBER FRAMING BY OTHERS TO BE AT 600 CTRS MAX FOR BOTH STUDS & NOGS. MAY BE REQUIRED AT CLOSER CENTERS SUBJECT TO ENGINEERING REQUIREMENTS

BUILDING AGENCY ALUCODUAL CLADDING (DAB) SYSTEM



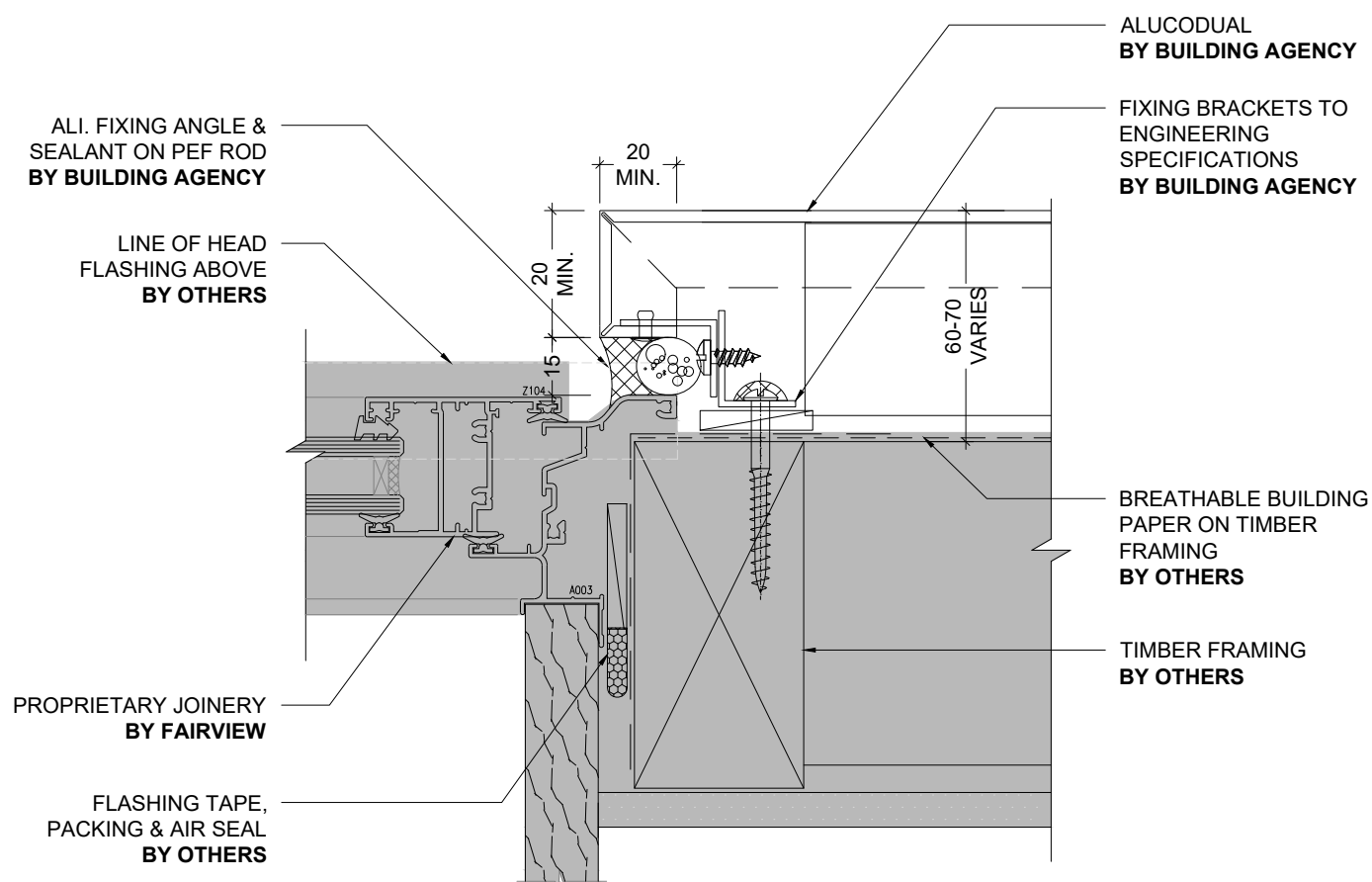
1 HEAD DETAIL - FAIRVIEW RESIDENTIAL JOINERY (SECTION)
- 1:2 @ A4

BUILDING AGENCY ALUCODUAL CLADDING (DAB) SYSTEM



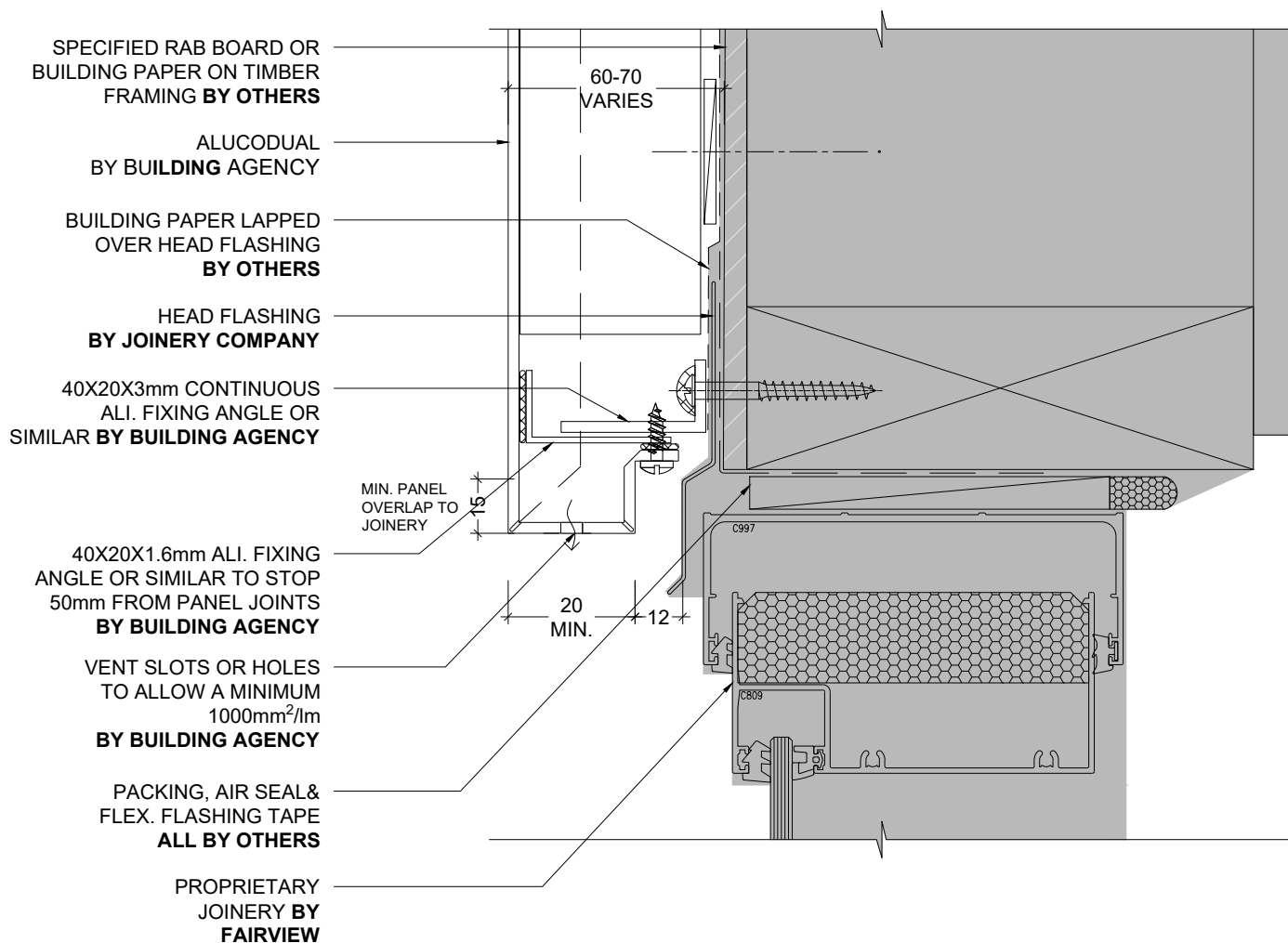
2 SILL DETAIL - FAIRVIEW RESIDENTIAL JOINERY (SECTION)
1:2 @ A4

BUILDING AGENCY ALUCODUAL CLADDING (DAB) SYSTEM



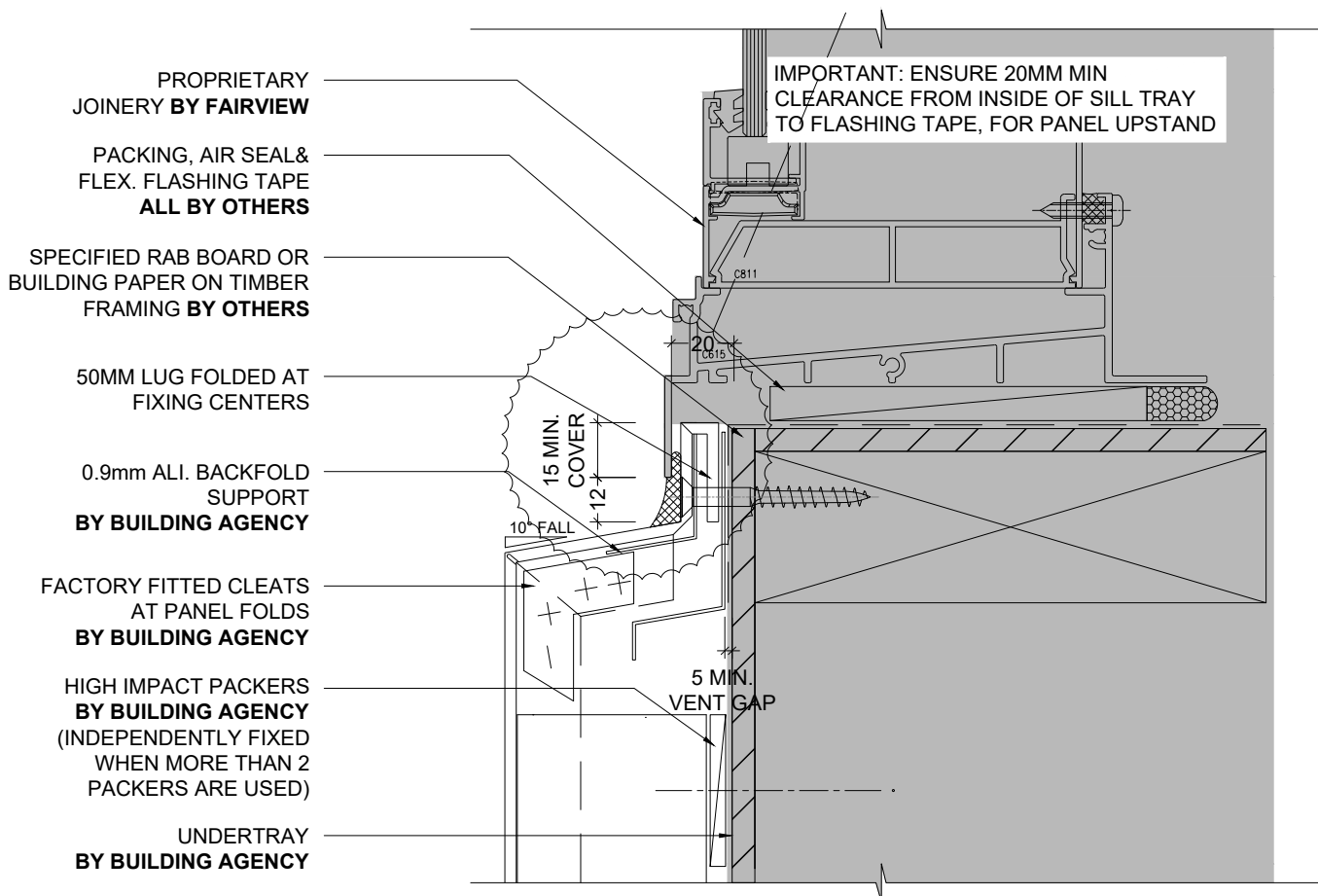
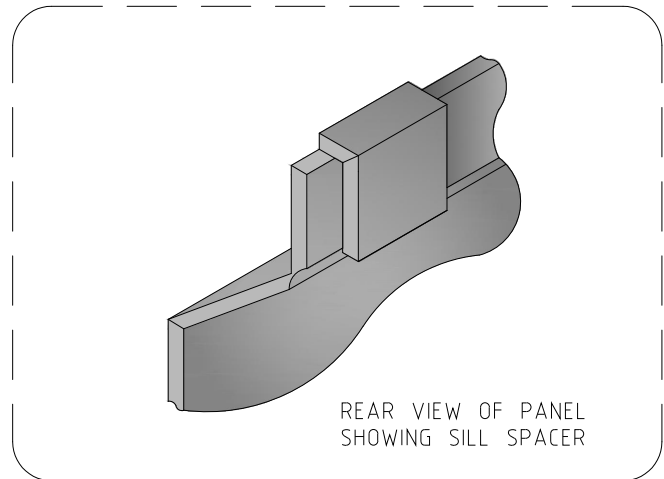
1 JAMB DETAIL - FAIRVIEW RESIDENTIAL JOINERY (PLAN)
- 1:2 @ A4

BUILDING AGENCY ALUCODUAL CLADDING (DAB) SYSTEM



1 TYPICAL FAIRVIEW COMMERCIAL HEAD DETAIL (SECTION)
 - 1:2 @ A4

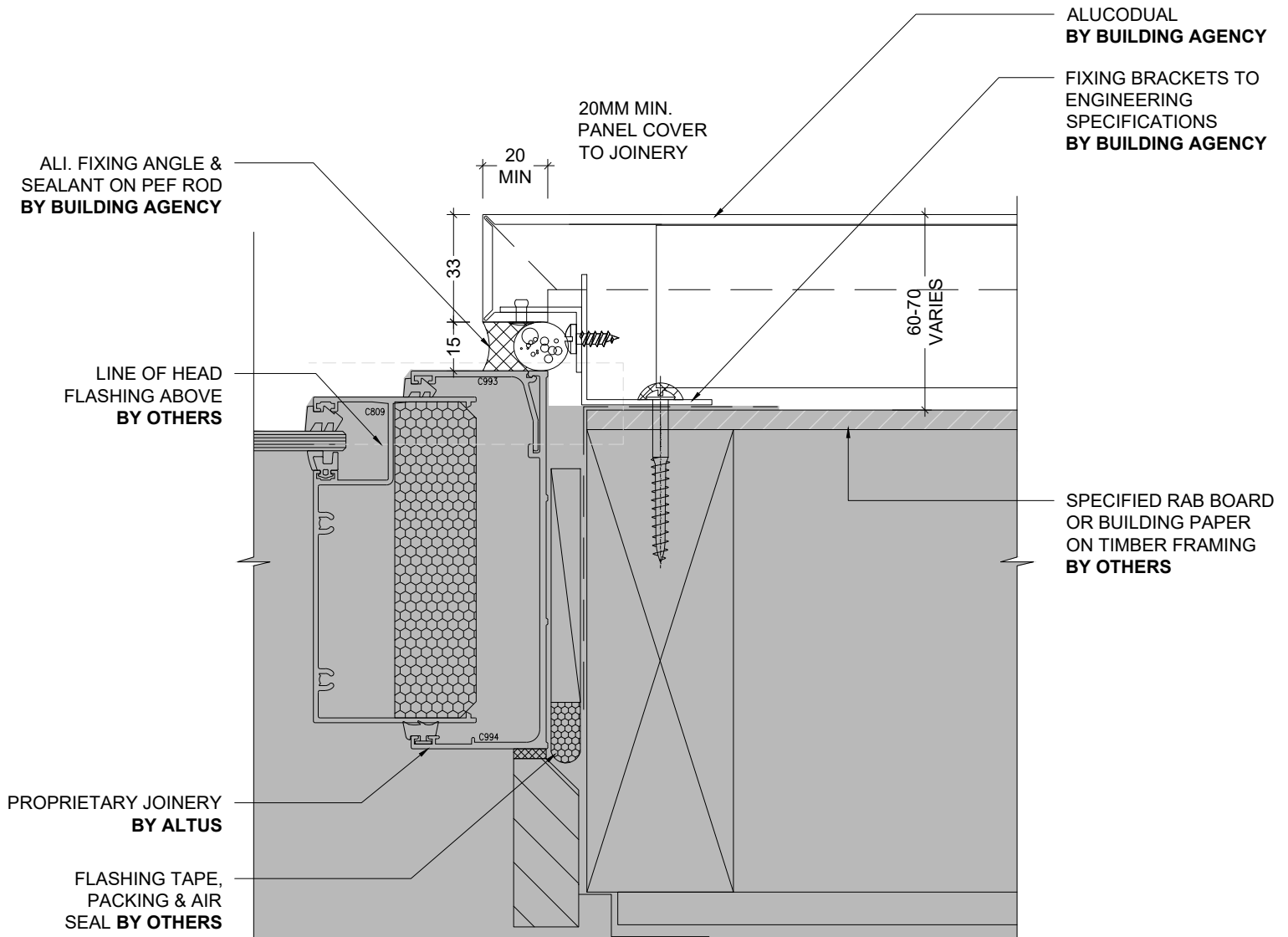
BUILDING AGENCY ALUCODUAL CLADDING (DAB) SYSTEM



TYPICAL FAIRVIEW COMMERCIAL SILL DETAIL (SECTION)

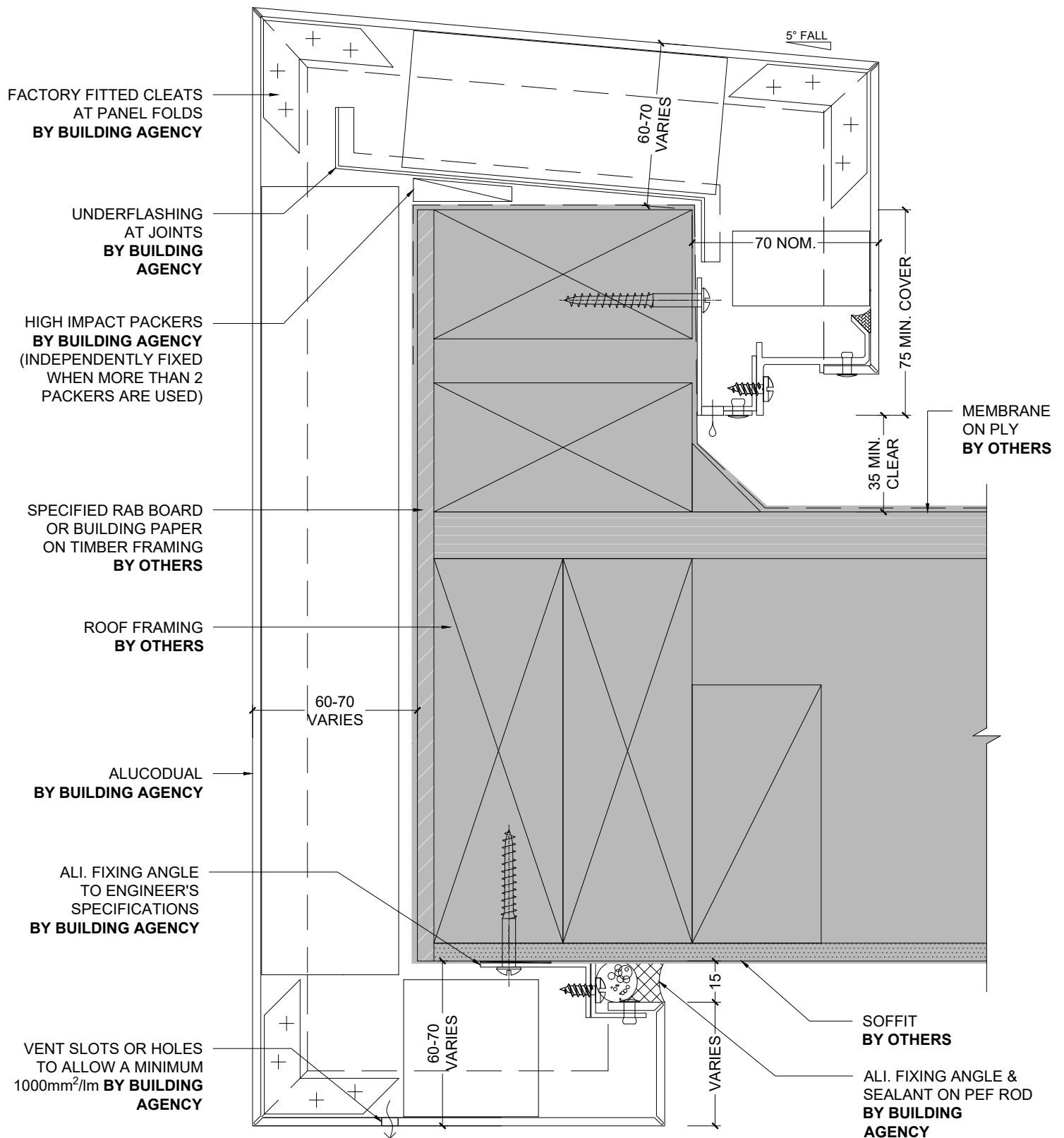
1:2 @ A4

BUILDING AGENCY ALUCODUAL CLADDING (DAB) SYSTEM



1 TYPICAL FAIRVIEW COMMERCIAL JAMB DETAIL (PLAN)
1:2 @ A4

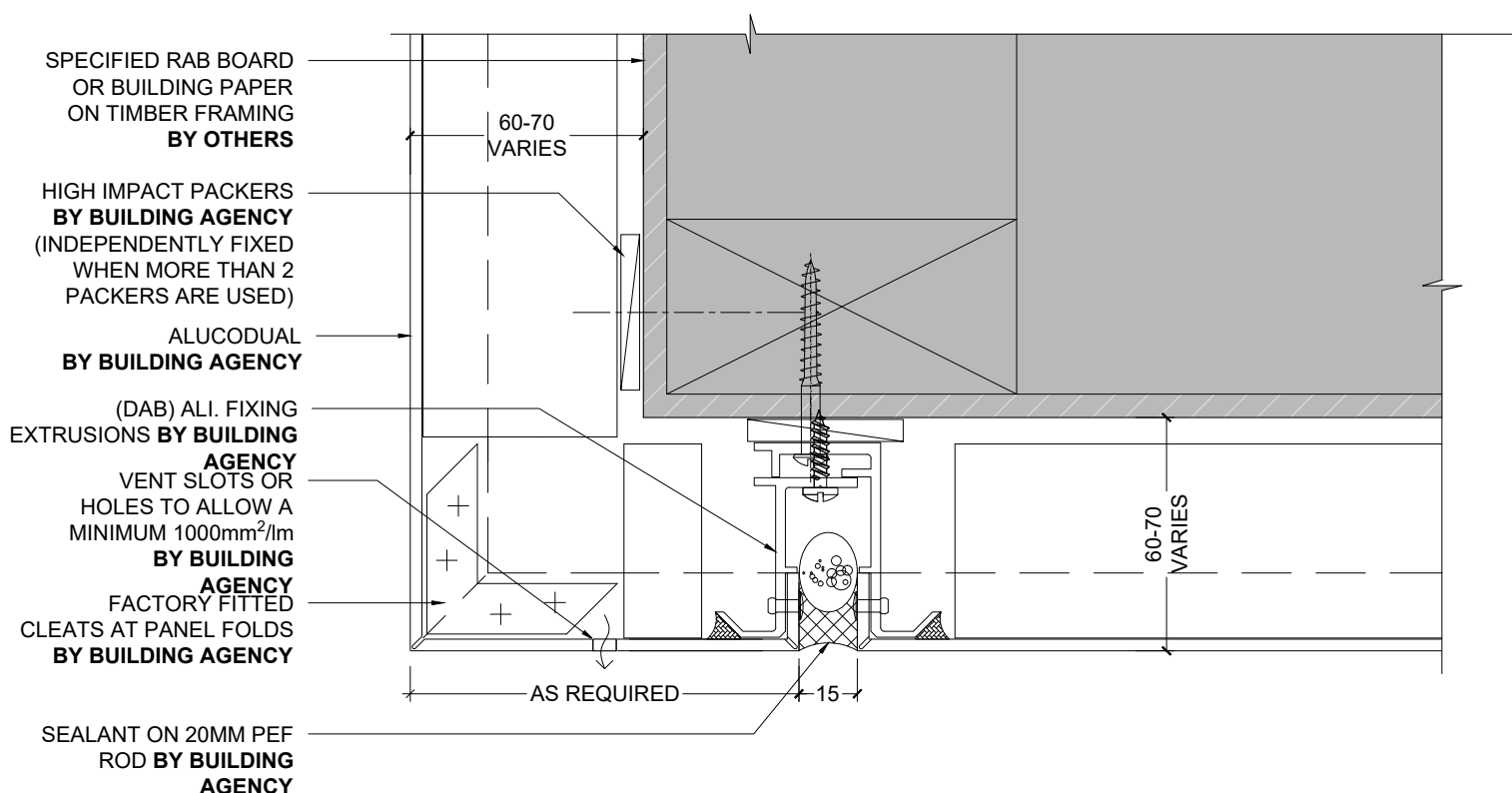
BUILDING AGENCY ALUCODUAL CLADDING (DAB) SYSTEM



1 FASCIA DETAIL - SOFFIT BY OTHERS (SECTION)

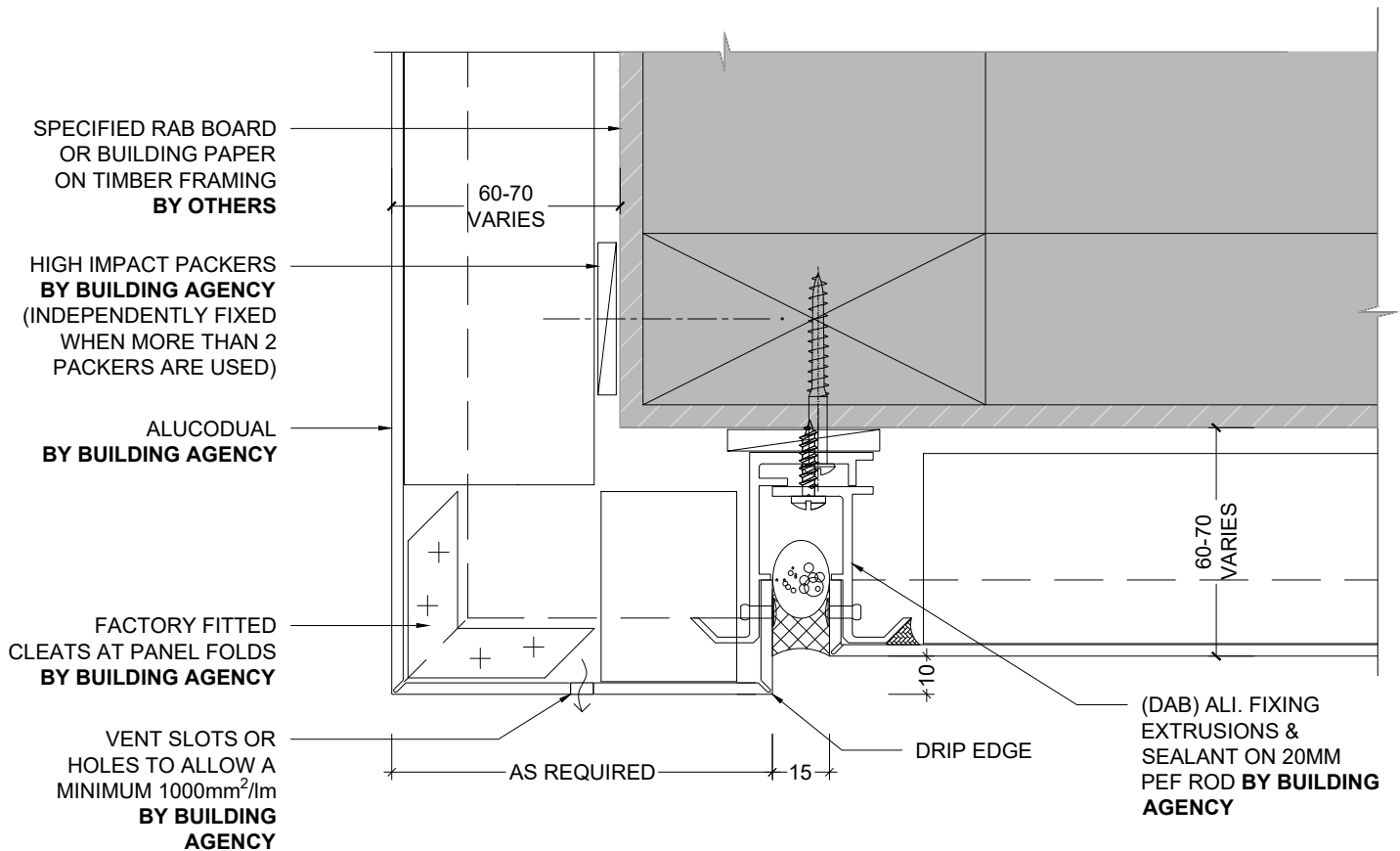
1:2 @ A4

BUILDING AGENCY ALUCODUAL CLADDING (DAB) SYSTEM



1
-
SOLID ALUMINIUM FASCIA TO SOFFIT 1 (SECTION)
1:2 @ A4

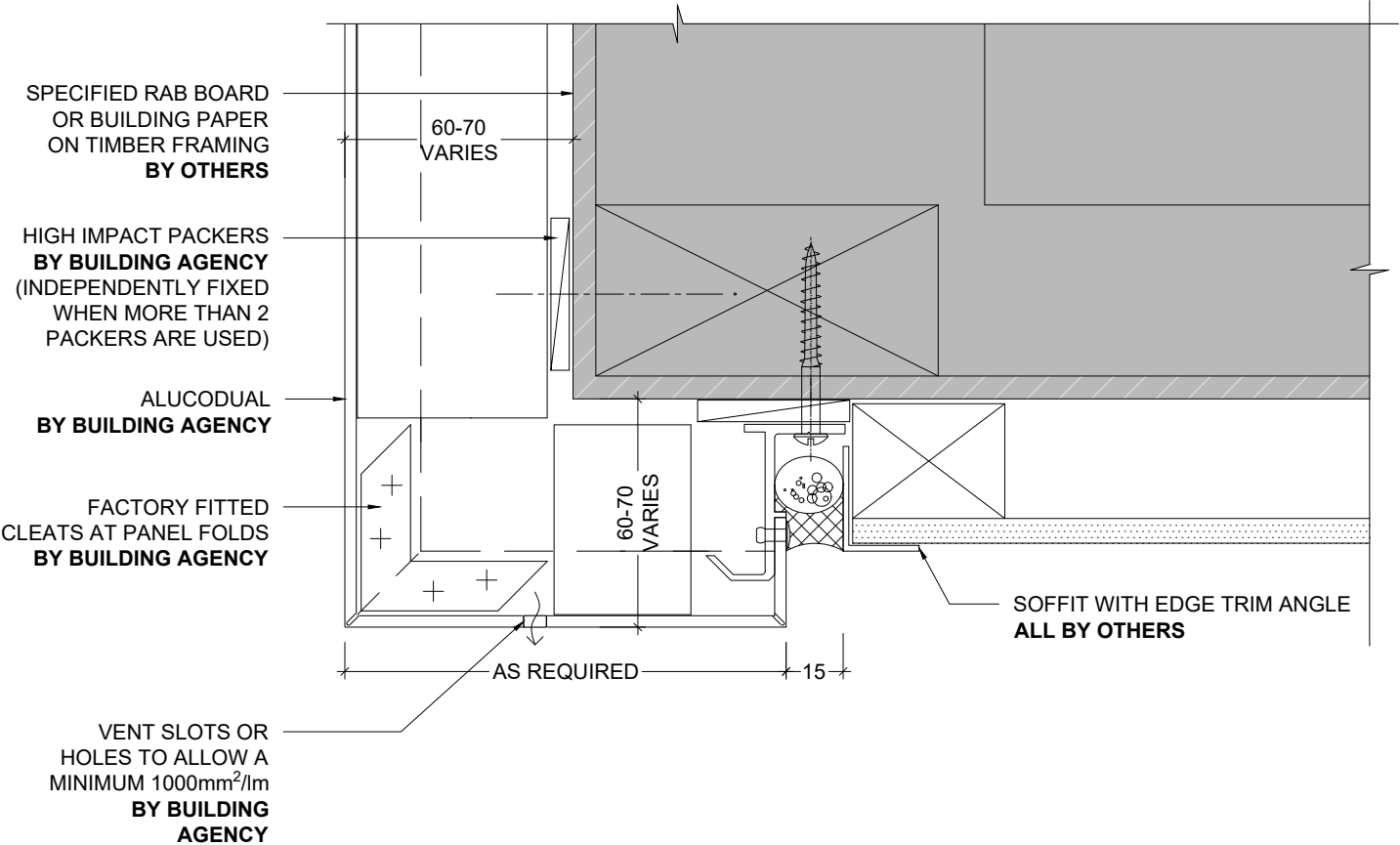
BUILDING AGENCY ALUCODUAL CLADDING (DAB) SYSTEM



DRIP EDGE DETAIL (SECTION)

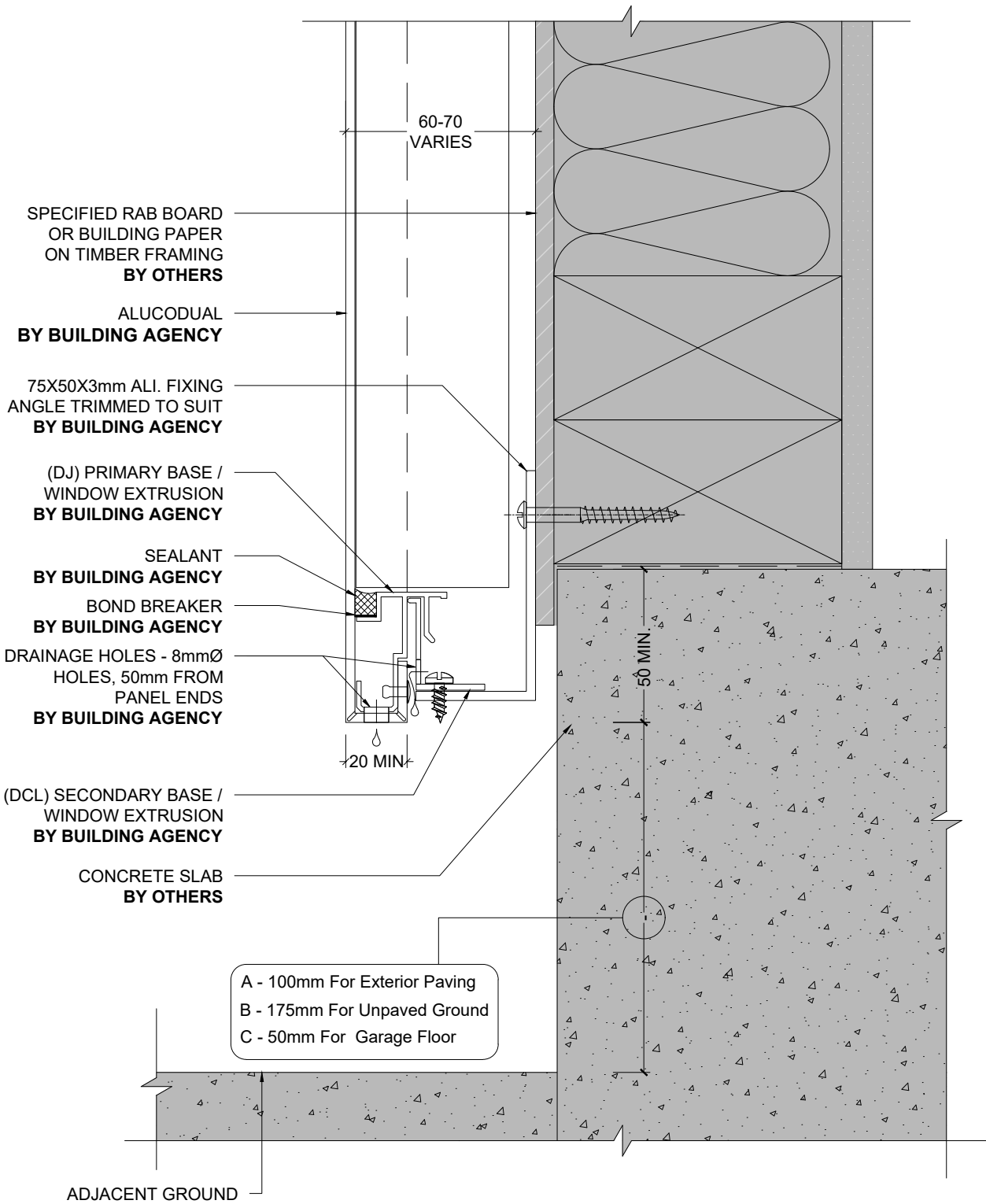
1:2 @ A4

BUILDING AGENCY ALUCODUAL CLADDING (DAB) SYSTEM



1 OPEN FLUSH SOFFIT JOINT (SECTION)
- 1:2 @ A4

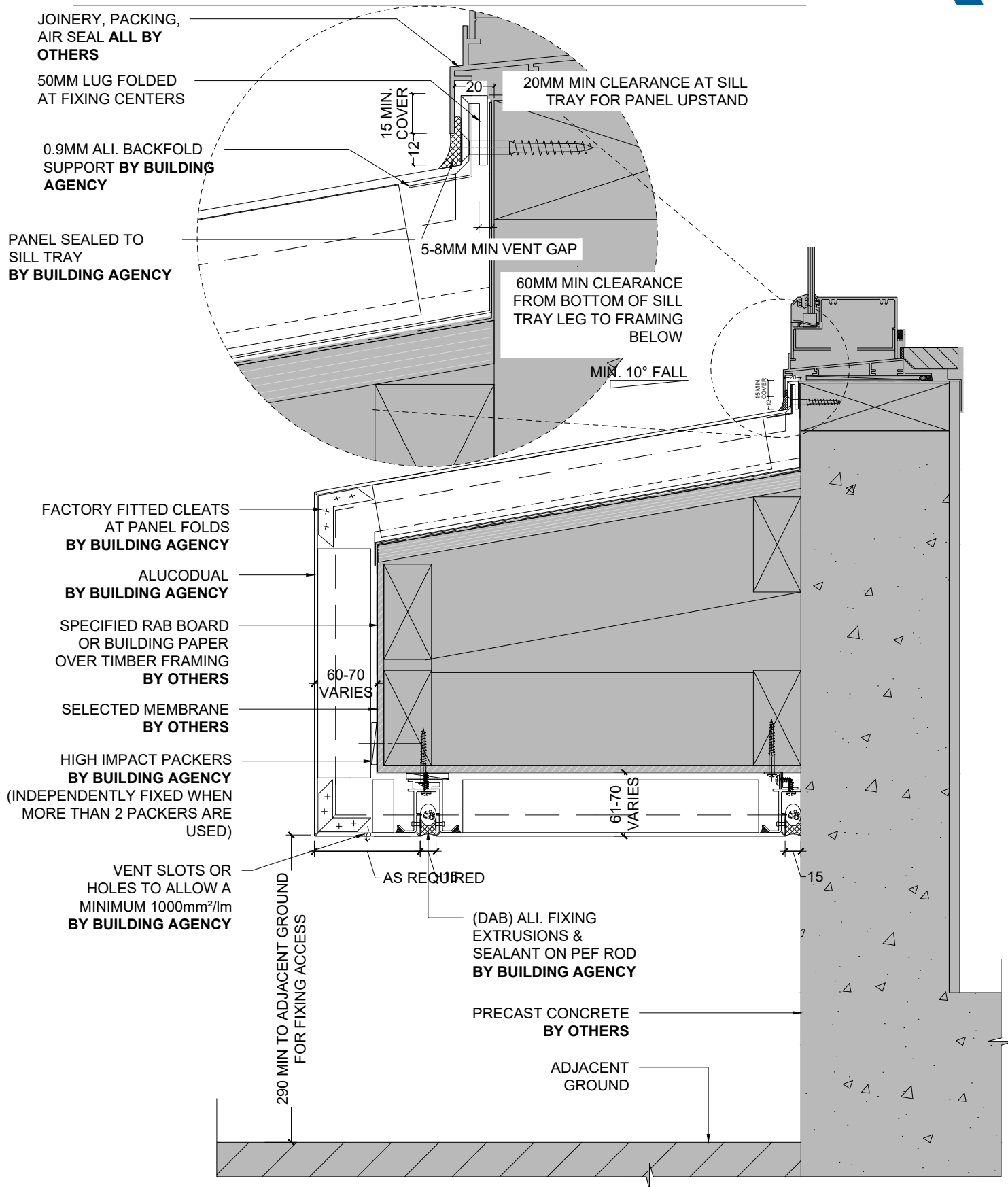
BUILDING AGENCY ALUCODUAL CLADDING (DAB) SYSTEM



BASE DETAIL 1 (SECTION)

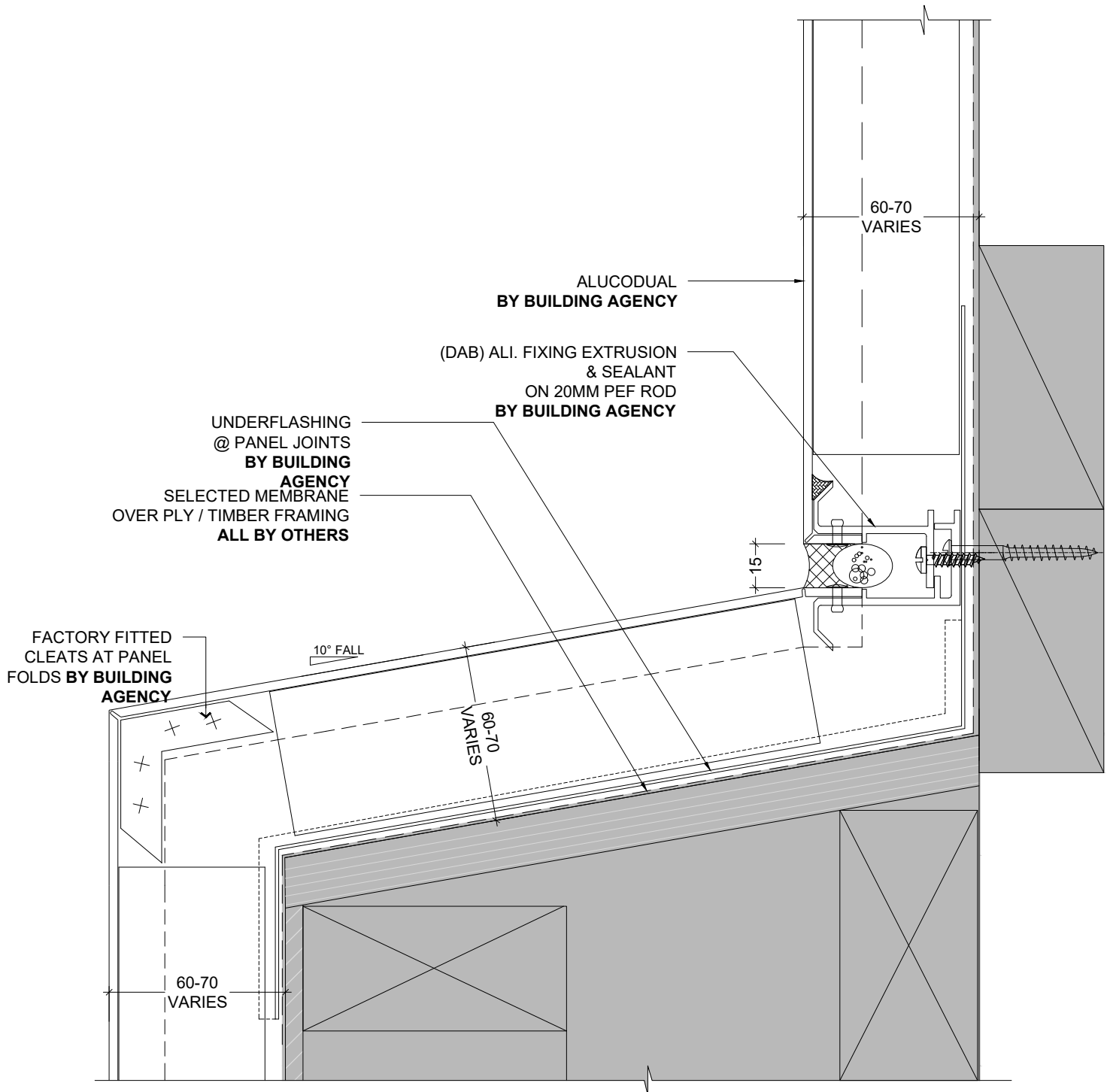
1:2 @ A4

BUILDING AGENCY ALUCODUAL CLADDING SYSTEM

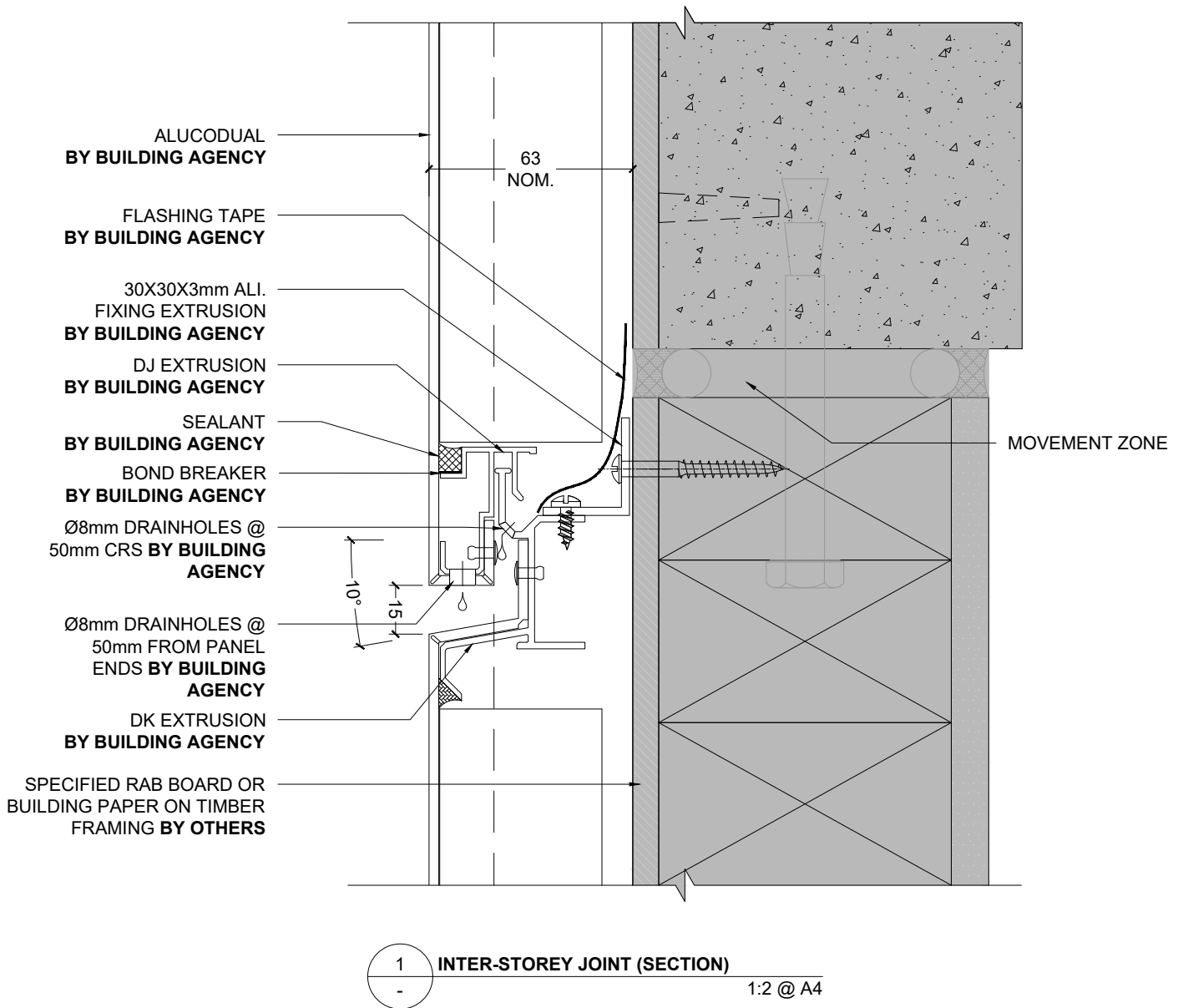


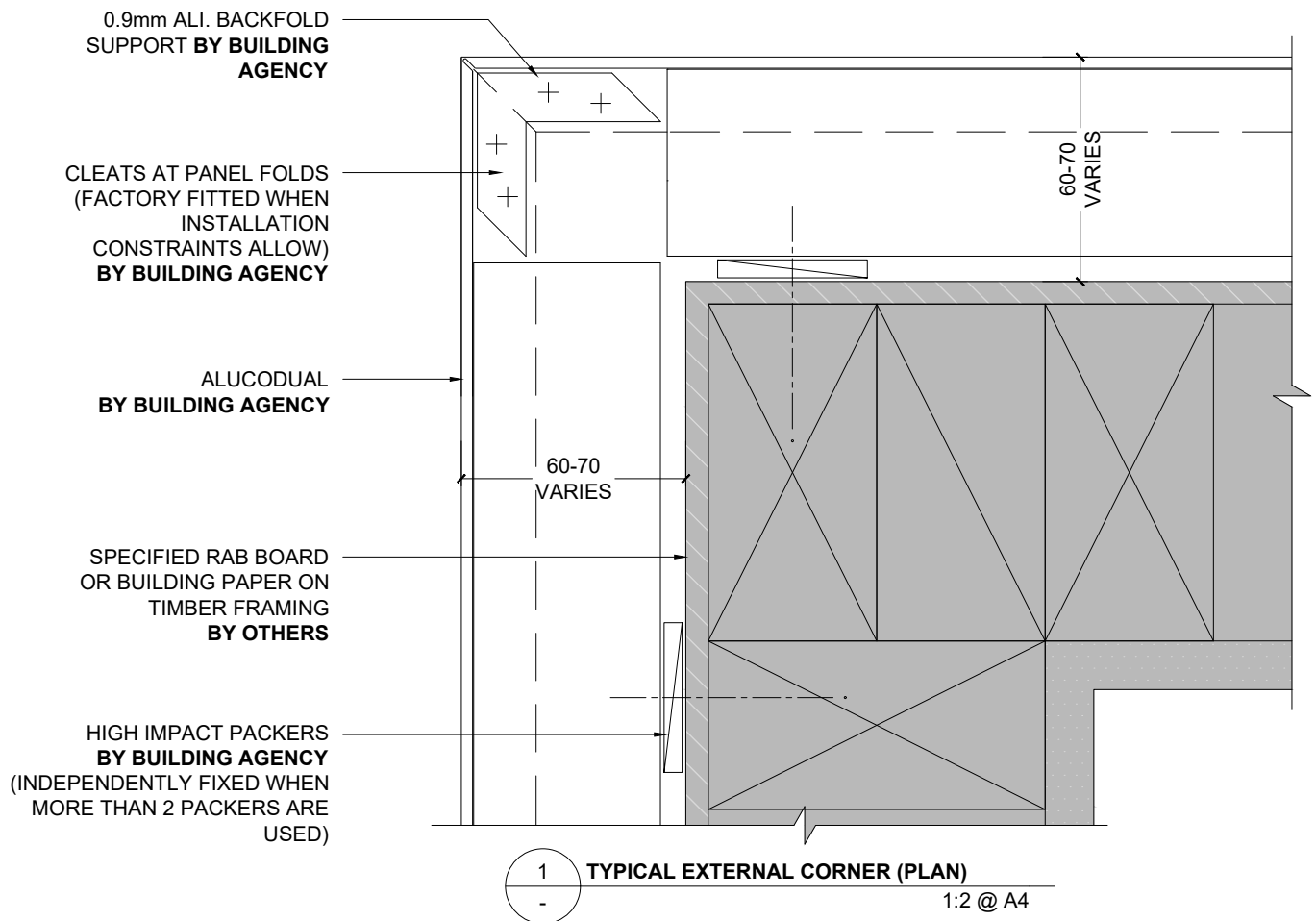
1
-
TYPICAL EYEBROW SILL DETAIL (SECTION)
1:5 @ A4

BUILDING AGENCY ALUCODUAL CLADDING (DAB) SYSTEM

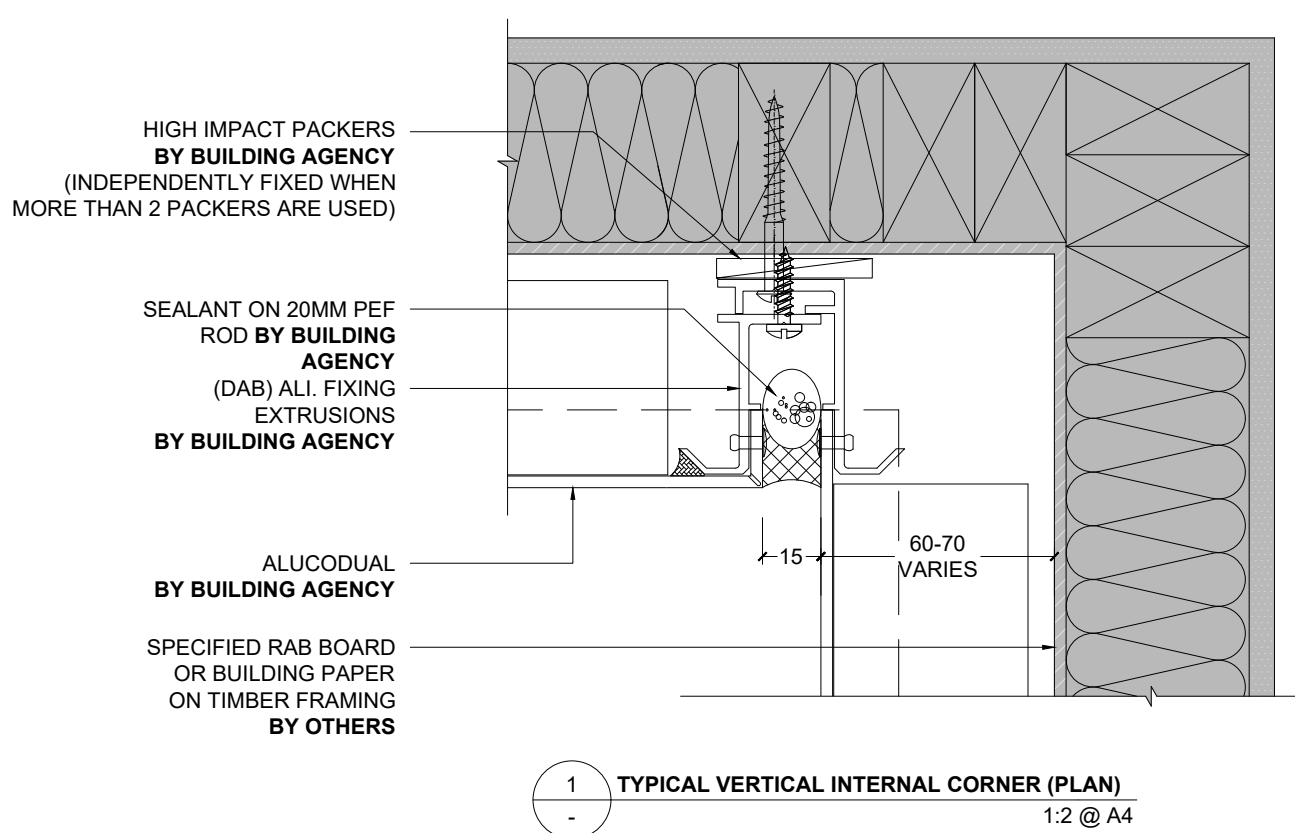


1 TYPICAL UPSTAND DETAIL (SECTION)
- 1:2 @ A4

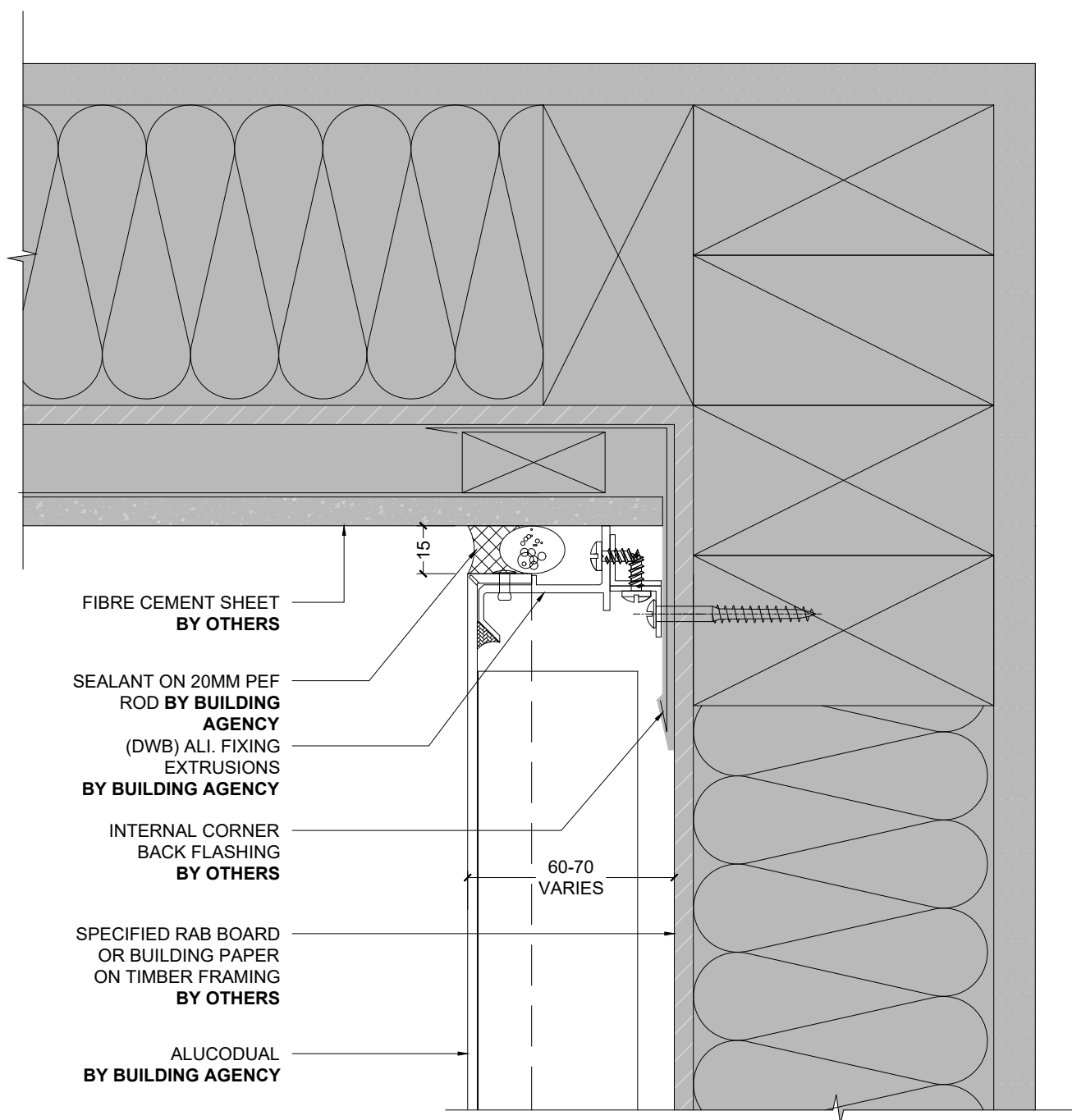




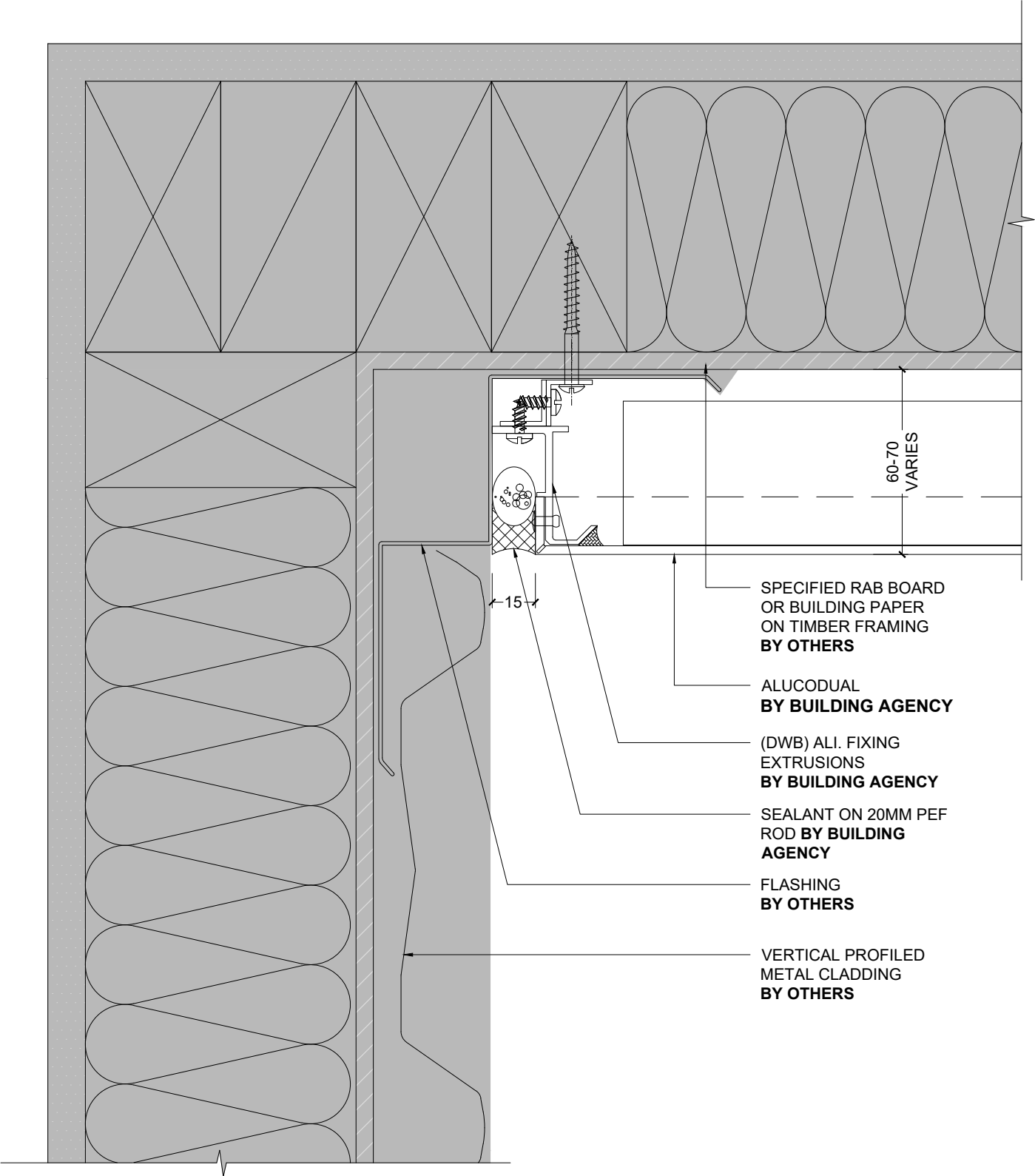
BUILDING AGENCY ALUCODUAL CLADDING (DAB) SYSTEM



BUILDING AGENCY ALUCODUAL CLADDING (DAB) SYSTEM



1 FIBRE CEMENT VERTICAL INTERNAL CORNER (PLAN)
- 1:2 @ A4

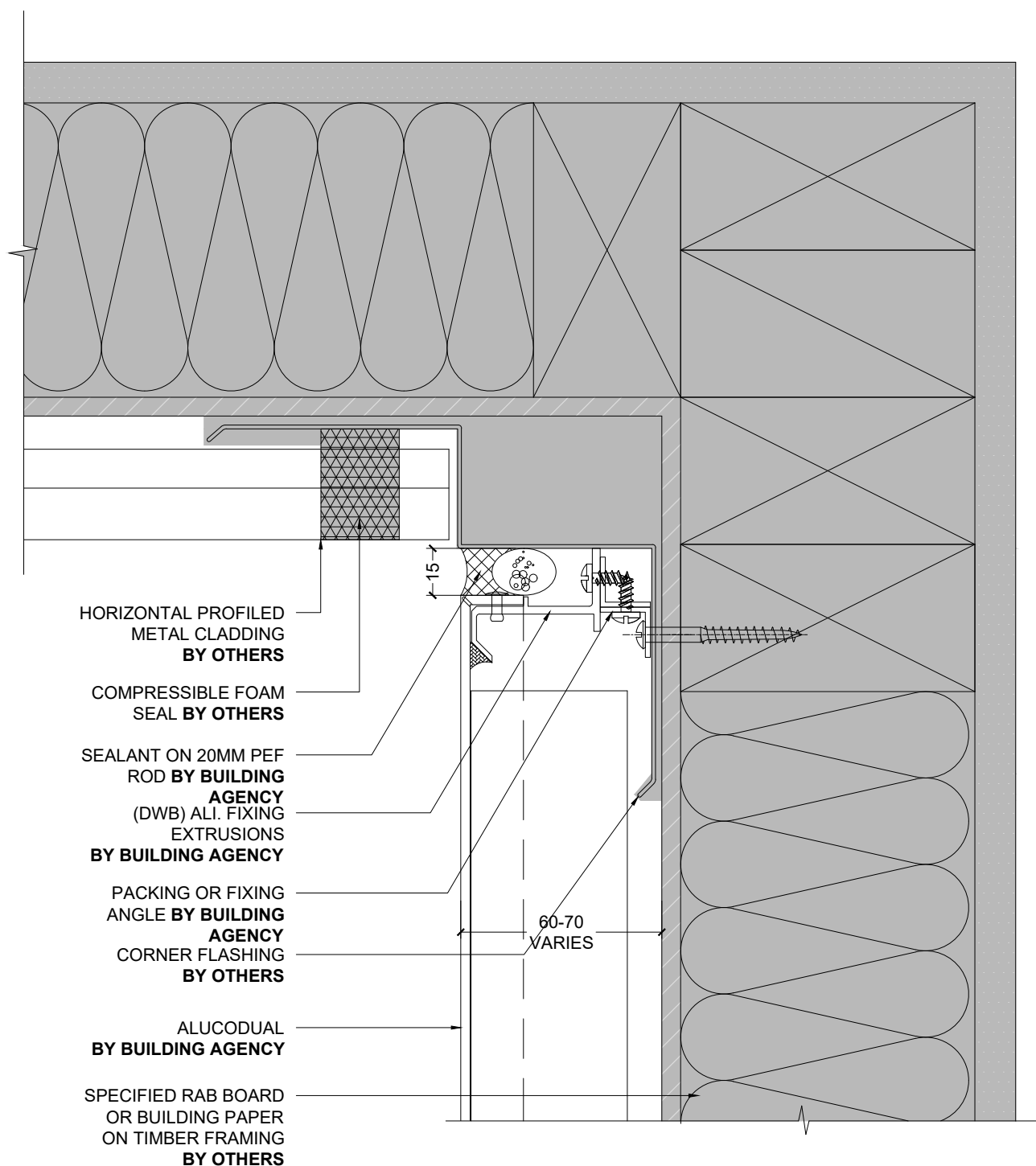


1
-

VERTICAL PROFILED METAL INTERNAL CORNER (PLAN)

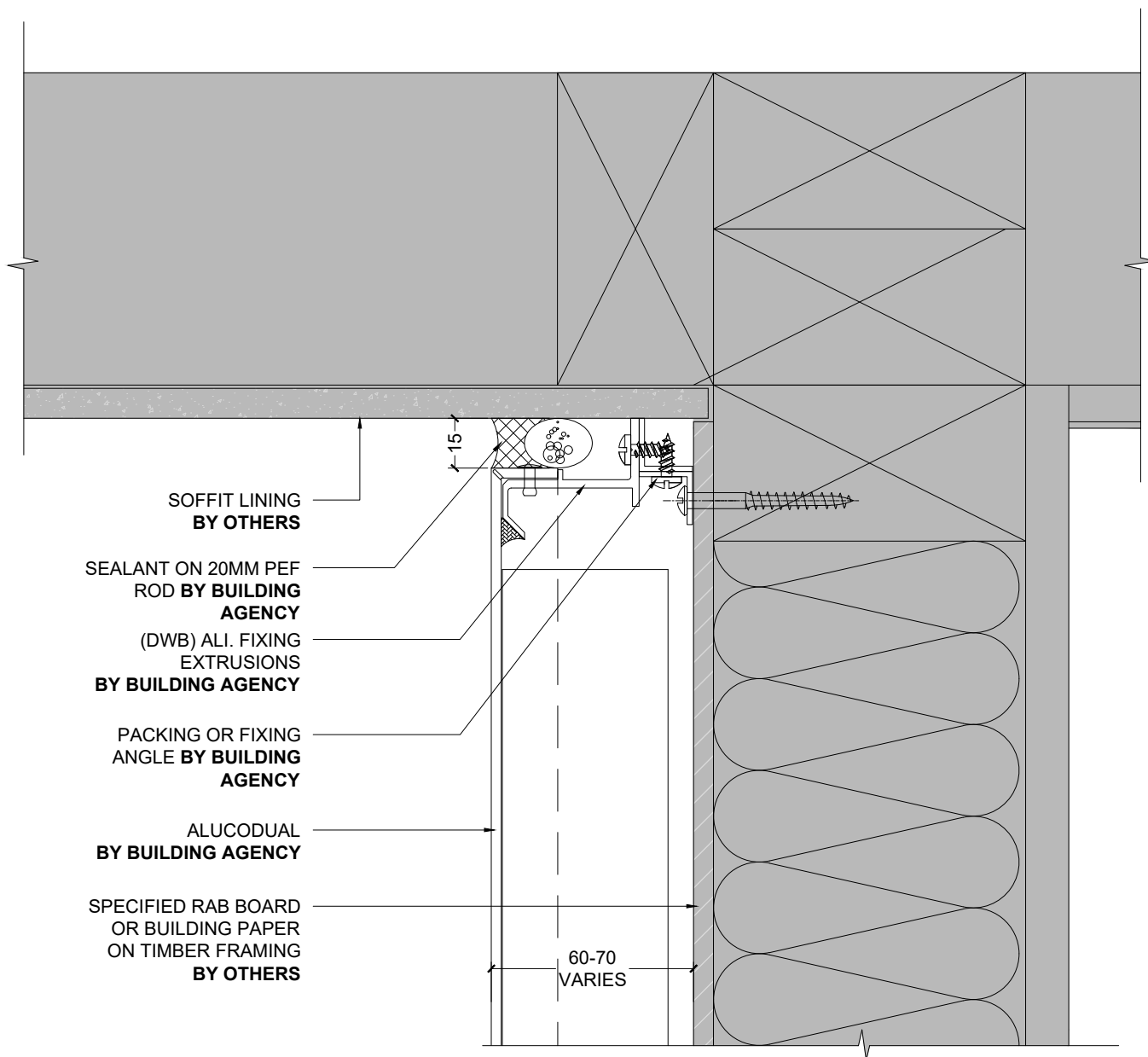
1:2 @ A4

BUILDING AGENCY ALUCODUAL CLADDING (DAB) SYSTEM



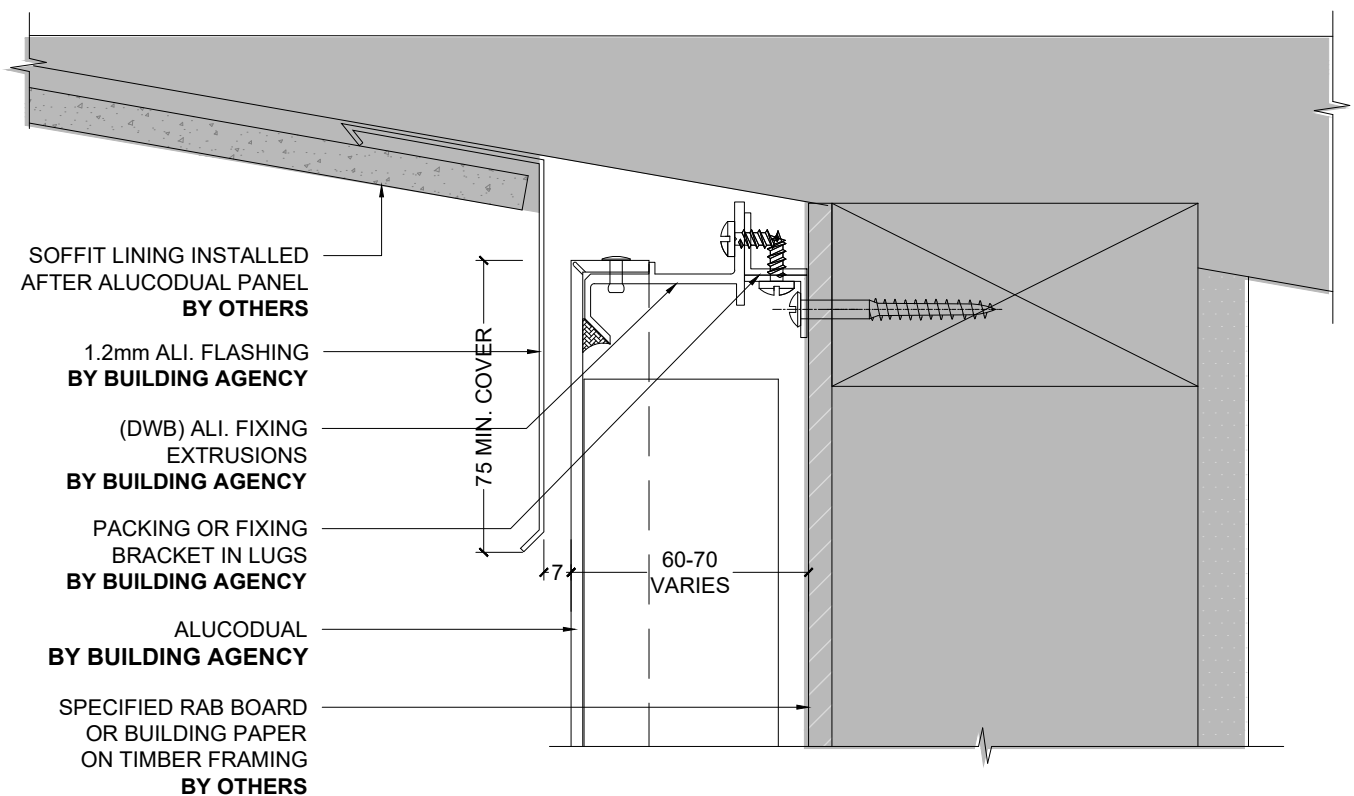
HORIZONTAL PROFILED METAL INTERNAL CORNER (PLAN)

1:2 @ A4

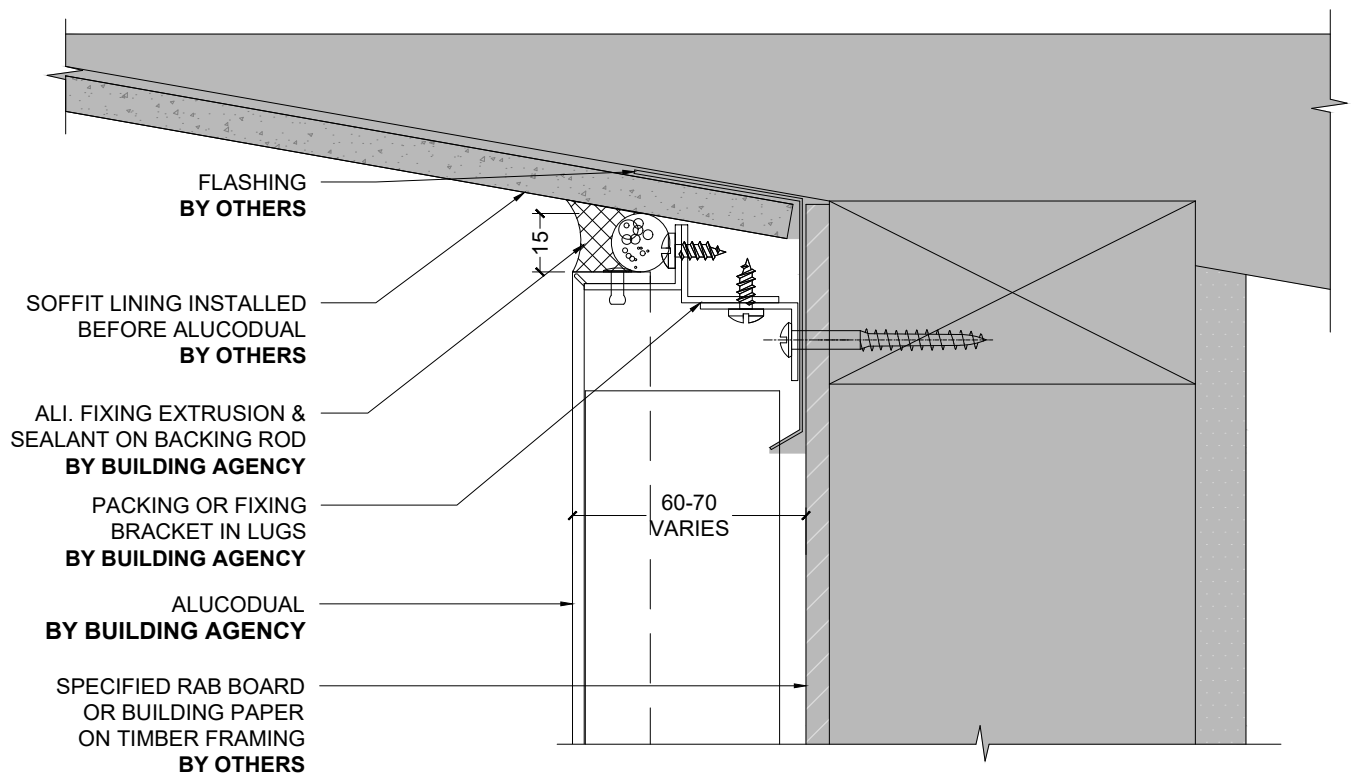


TYPICAL WALL TO SOFFIT JUNCTION 1 (SECTION)

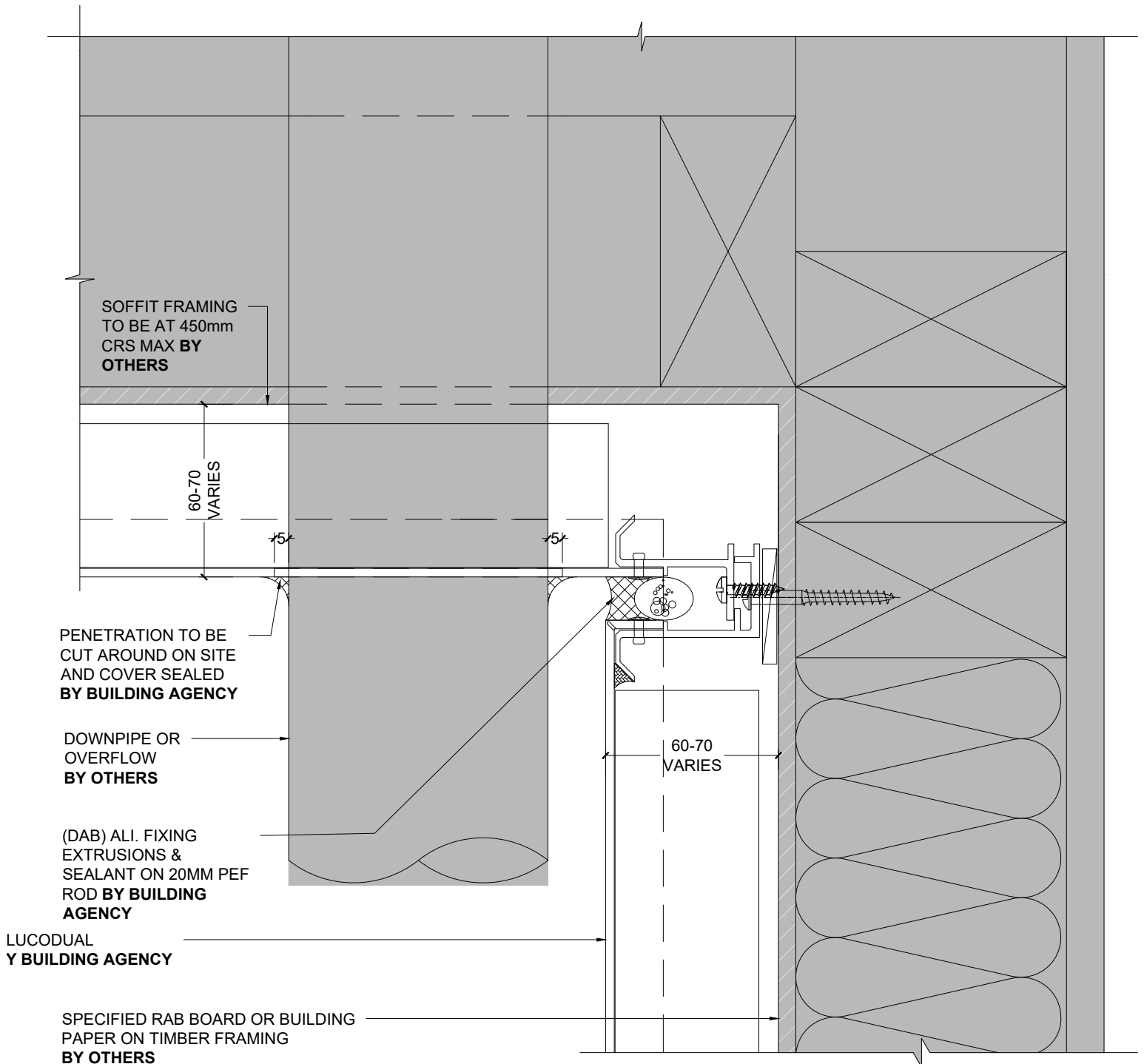
1:2 @ A4



1 WALL TO RAKING SOFFIT JUNCTION 1 (SECTION)
- FULL WEATHER EXPOSURE 1:2 @ A4



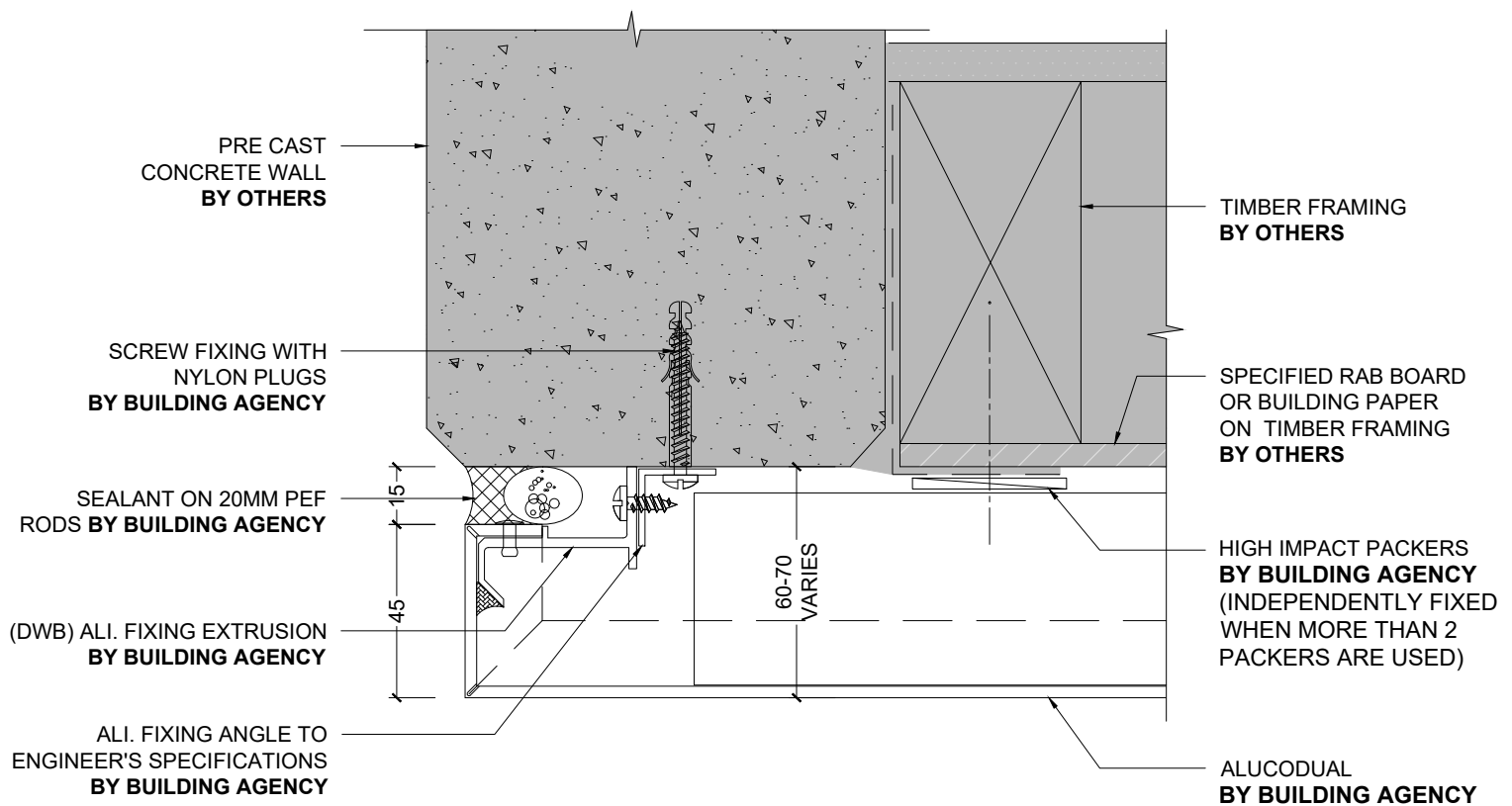
1 WALL TO RAKING SOFFIT JUNCTION 2 (SECTION)
- INTERIOR OR LOW WEATHER EXPOSURE 1:2 @ A4



WALL TO SOFFIT JUNCTION & DOWNPIPE PENETRATION (SECTION)

1:2 @ A4

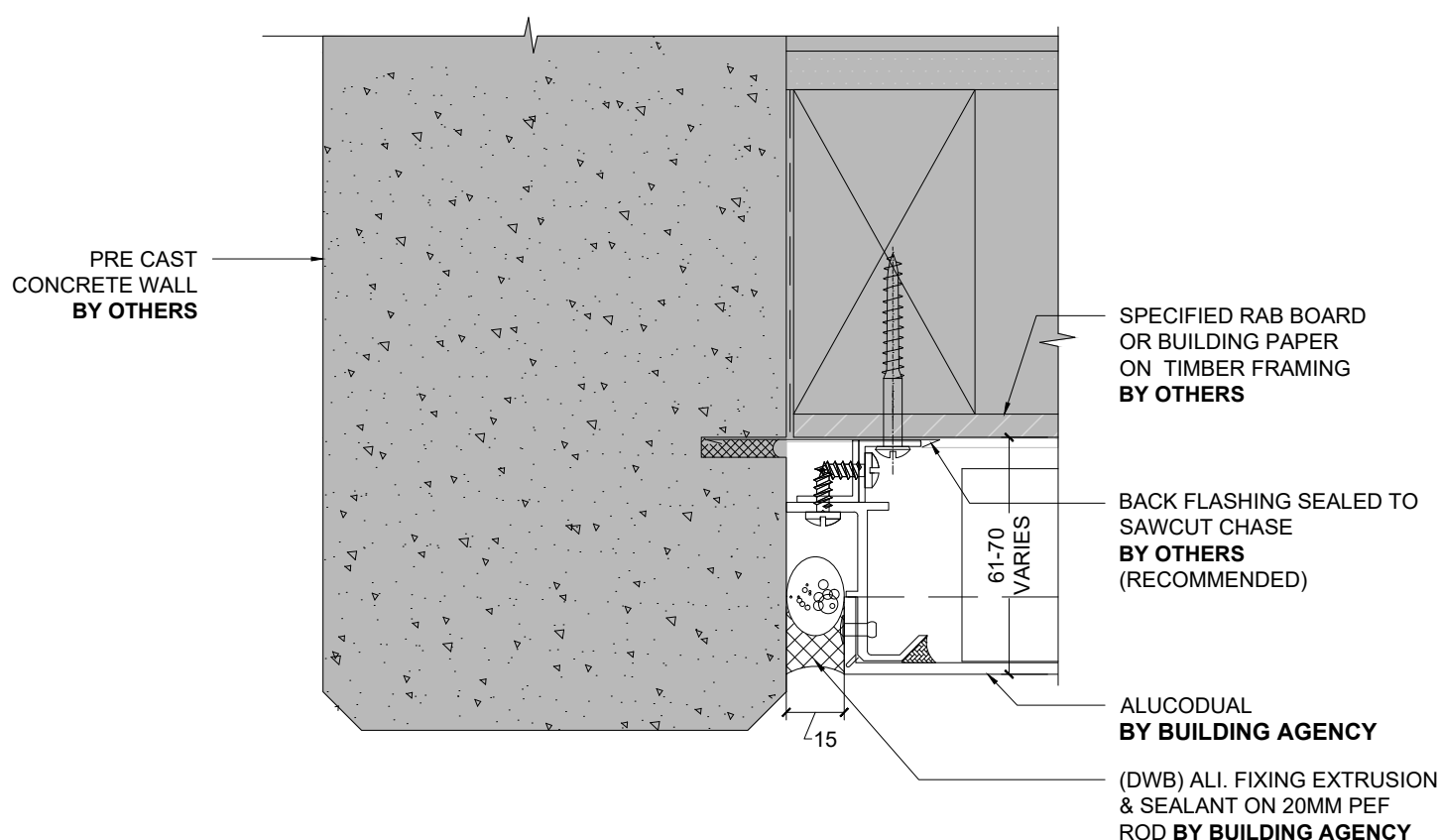
BUILDING AGENCY ALUCODUAL CLADDING (DAB) SYSTEM



1 PRECAST CONCRETE WALL JUNCTION 1 (PLAN)

1:2 @ A4

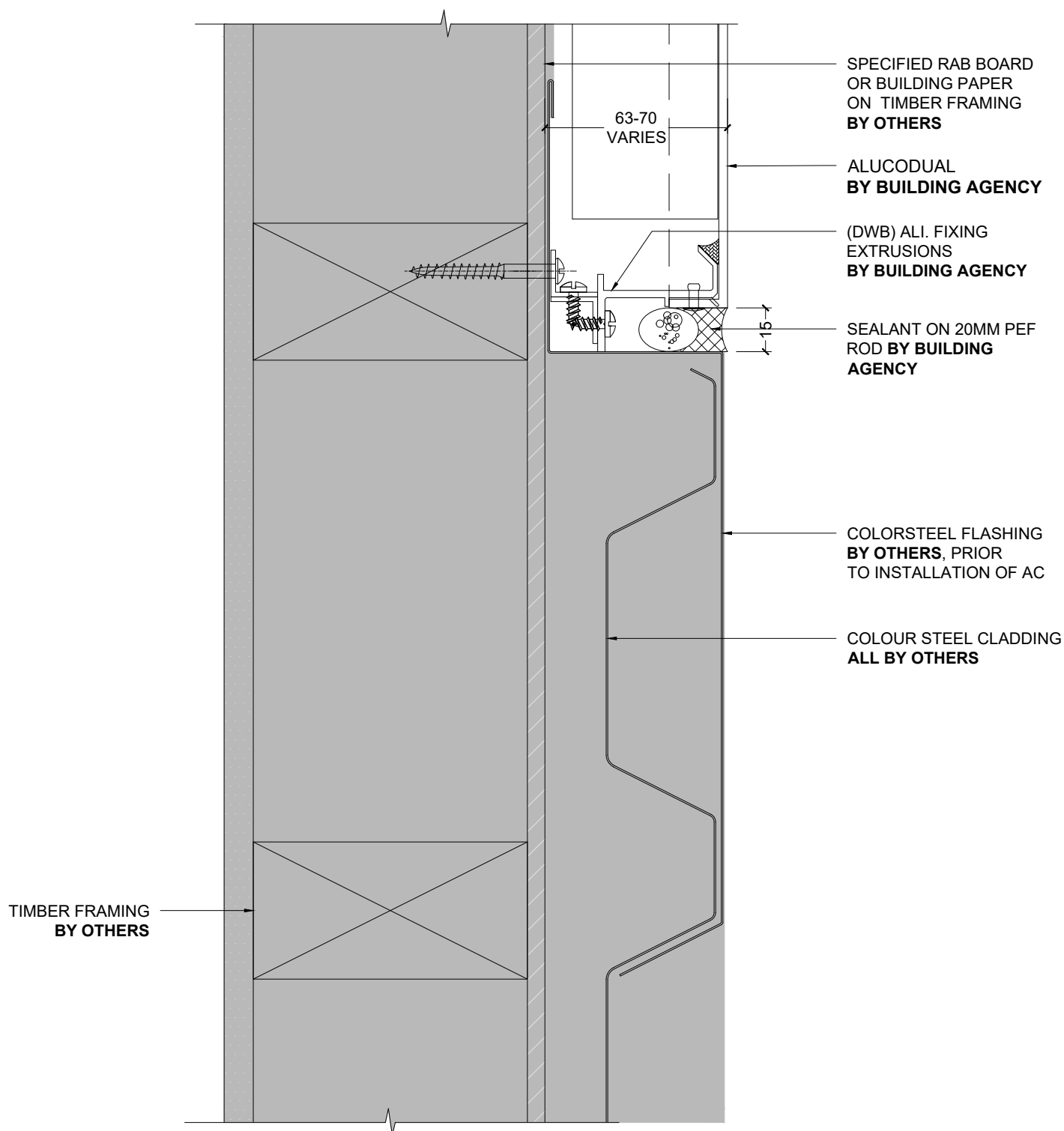
BUILDING AGENCY ALUCODUAL CLADDING (DAB) SYSTEM



1 PRECAST CONCRETE WALL JUNCTION 2 (PLAN)
1:2 @ A4

NOTE: CHASED FLASHING IS RECOMMENDED AT ALL VERTICAL CONCRETE JUNCTION DETAILS. IT IS THE BUILDING DESIGNER'S RESPONSIBILITY TO CHECK WITH APPLICABLE LOCAL BUILDING AUTHORITIES AS TO WHETHER THIS IS REQUIRED

BUILDING AGENCY ALUCODUAL CLADDING (DAB) SYSTEM



VERTICAL PROFILED METAL JUNCTION (PLAN)

1:2 @ A4