

NOTE

TIMBER FRAMING BY OTHERS TO BE AT 600 CTRS MAX FOR BOTH STUDS & NOGS. MAY BE REQUIRED AT CLOSER CENTERS SUBJECT TO ENGINEERING REQUIREMENTS

VERTICAL JOINT ON RAB

Detail Number

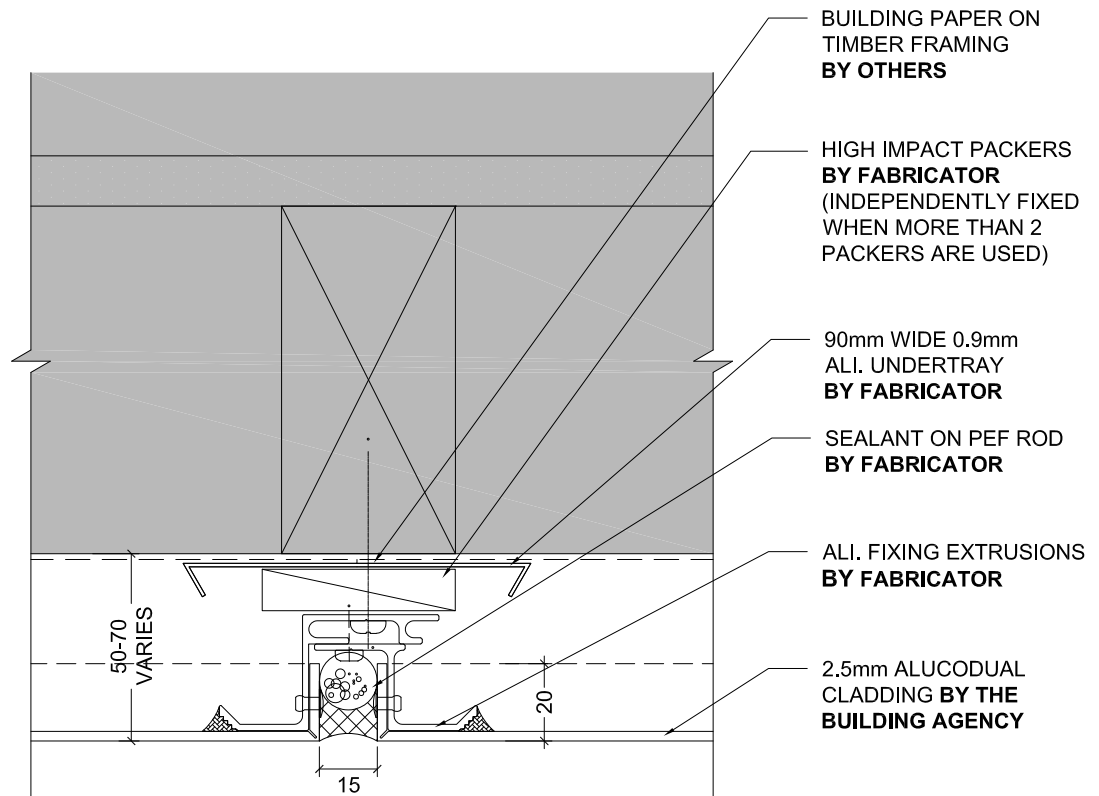
Version

1.0

[v1.0]



MATERIALS • SYSTEMS • SOLUTIONS



NOTE

TIMBER FRAMING BY OTHERS TO BE AT 600 CTRS MAX FOR BOTH STUDS & NOGS. MAY BE REQUIRED AT CLOSER CENTERS SUBJECT TO ENGINEERING REQUIREMENTS



VERTICAL JOINT ON BUILDING PAPER

Detail Number

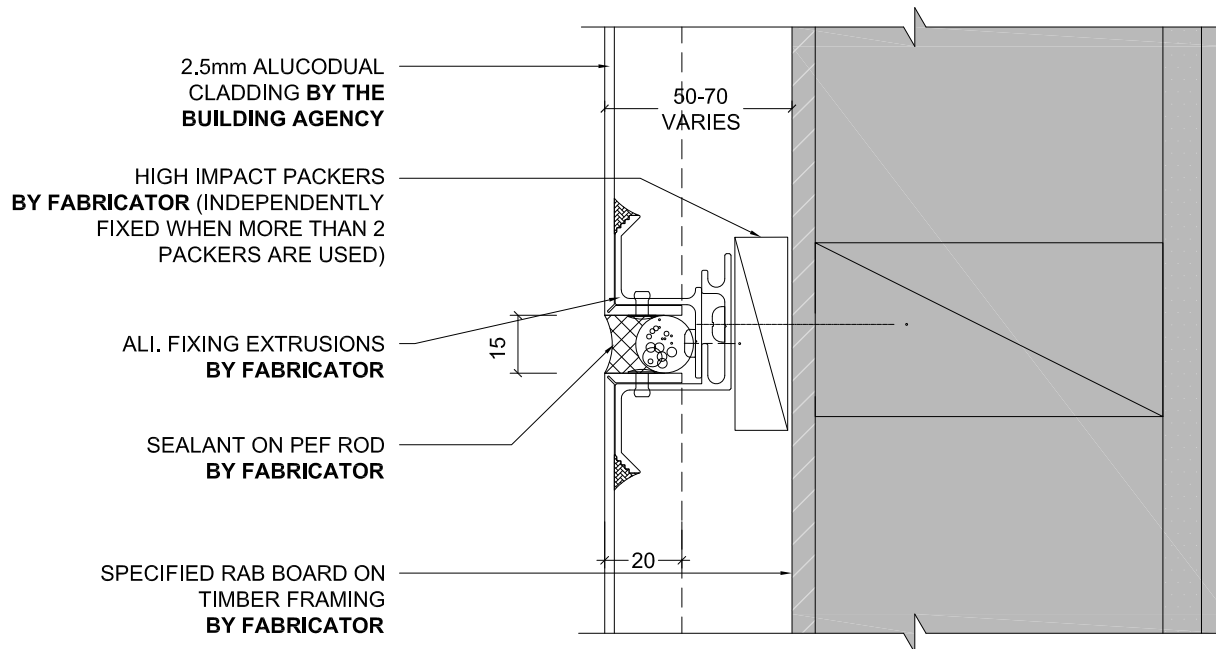
1.1

Version

[v1.0]



MATERIALS • SYSTEMS • SOLUTIONS



NOTE

TIMBER FRAMING BY OTHERS TO BE AT 600 CTRS MAX FOR BOTH STUDS & NOGS. MAY BE REQUIRED AT CLOSER CENTERS SUBJECT TO ENGINEERING REQUIREMENTS



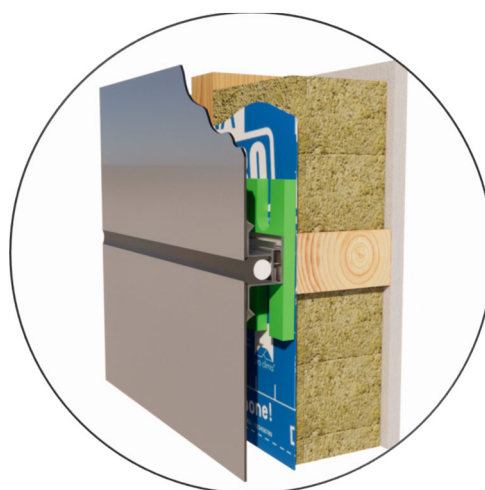
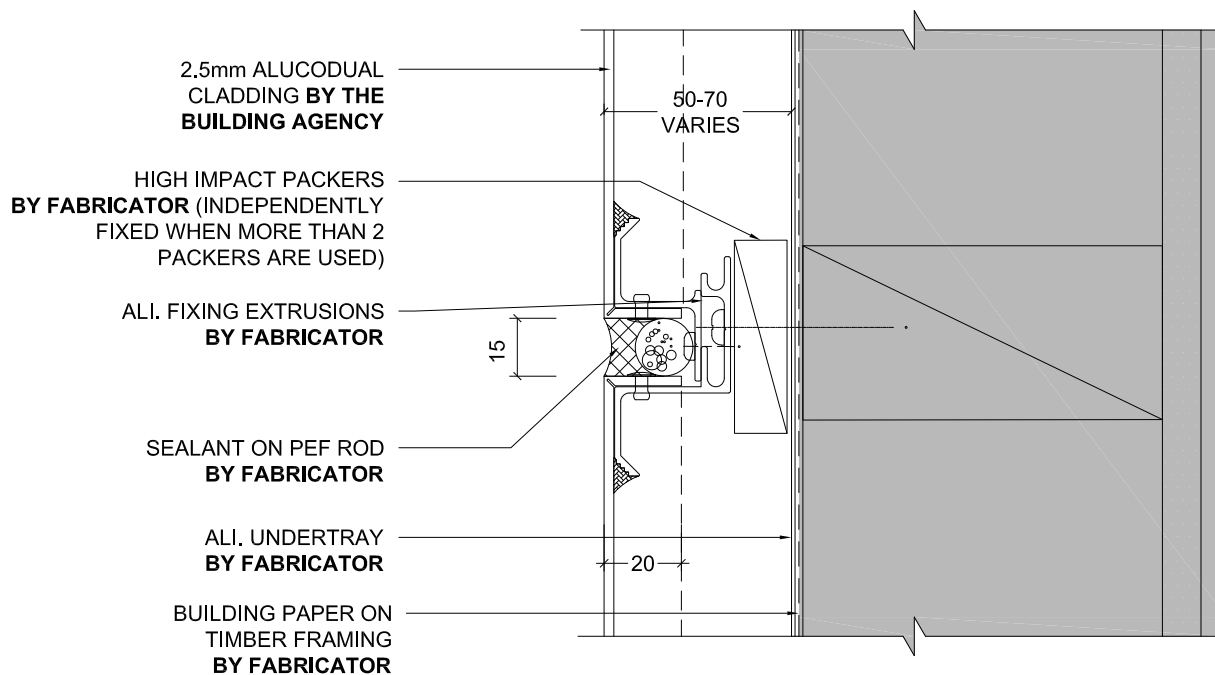
HORIZONTAL JOINT ON RAB

Detail Number

2.0

Version

[v1.0]



NOTE

TIMBER FRAMING BY OTHERS TO BE AT 600 CTRS MAX FOR BOTH STUDS & NOGS. MAY BE REQUIRED AT CLOSER CENTERS SUBJECT TO ENGINEERING REQUIREMENTS

HORIZONTAL JOINT ON BUILDING PAPER

Detail Number

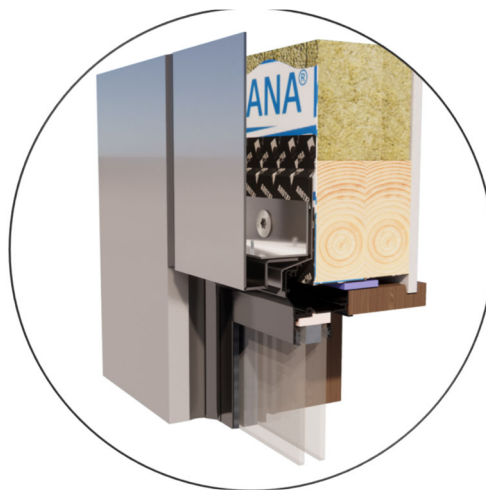
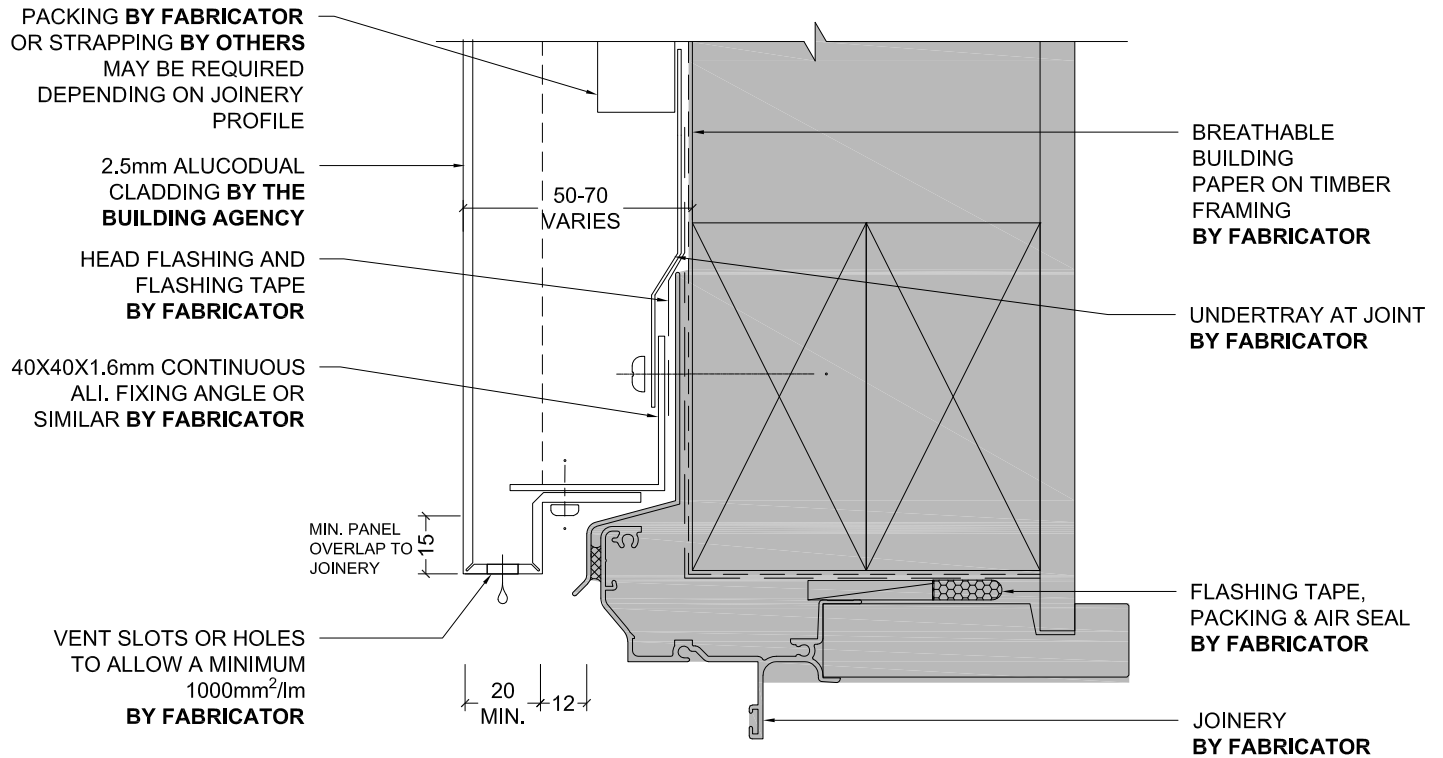
2.1

Version

[v1.0]



MATERIALS • SYSTEMS • SOLUTIONS



WINDOW HEAD RESIDENTIAL JOINERY

Detail Number

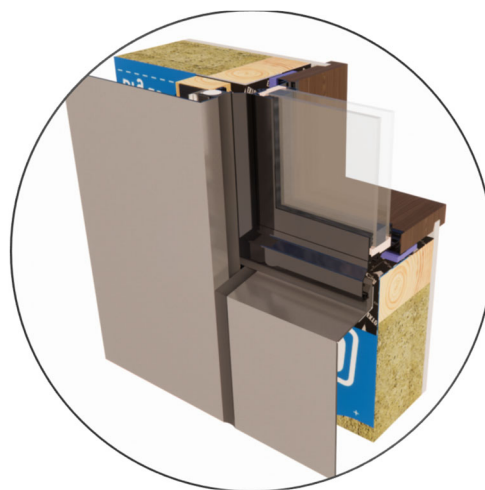
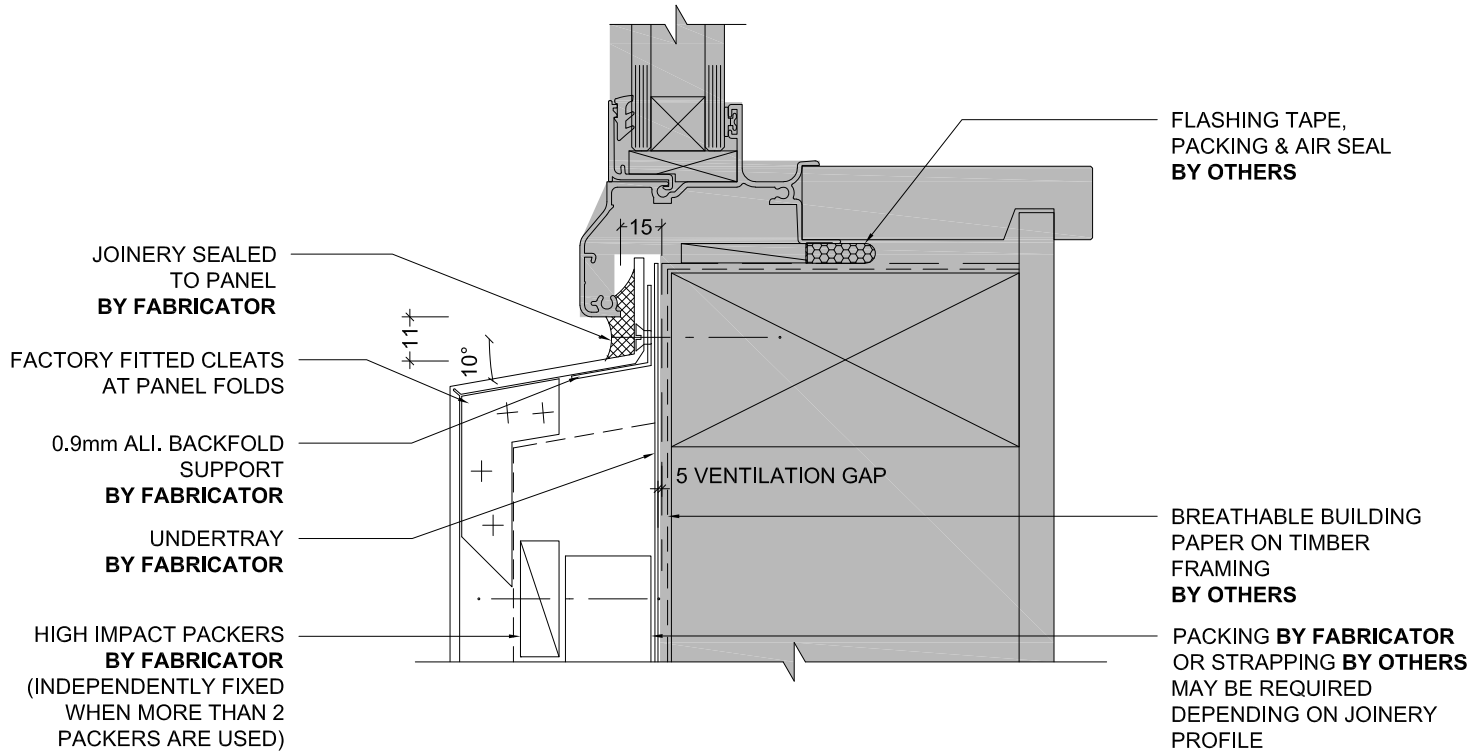
Version

3.1.0

[v1.0]



MATERIALS • SYSTEMS • SOLUTIONS



NOTE

IMPORTANT: ENSURE 15MM MIN CLEARANCE FROM INSIDE OF SILL TRAY TO FLASHING TAPE, FOR PANEL UPSTAND

WINDOW SILL RESIDENTIAL JOINERY

Detail Number

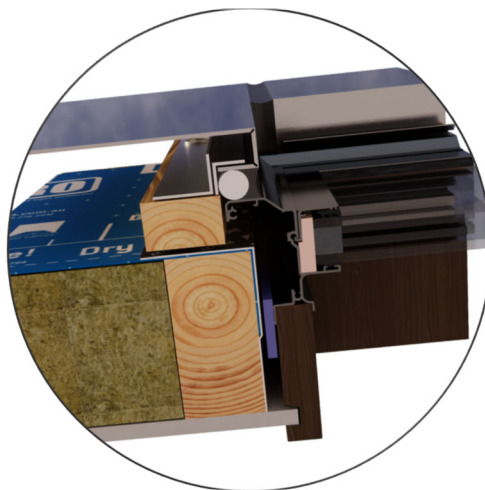
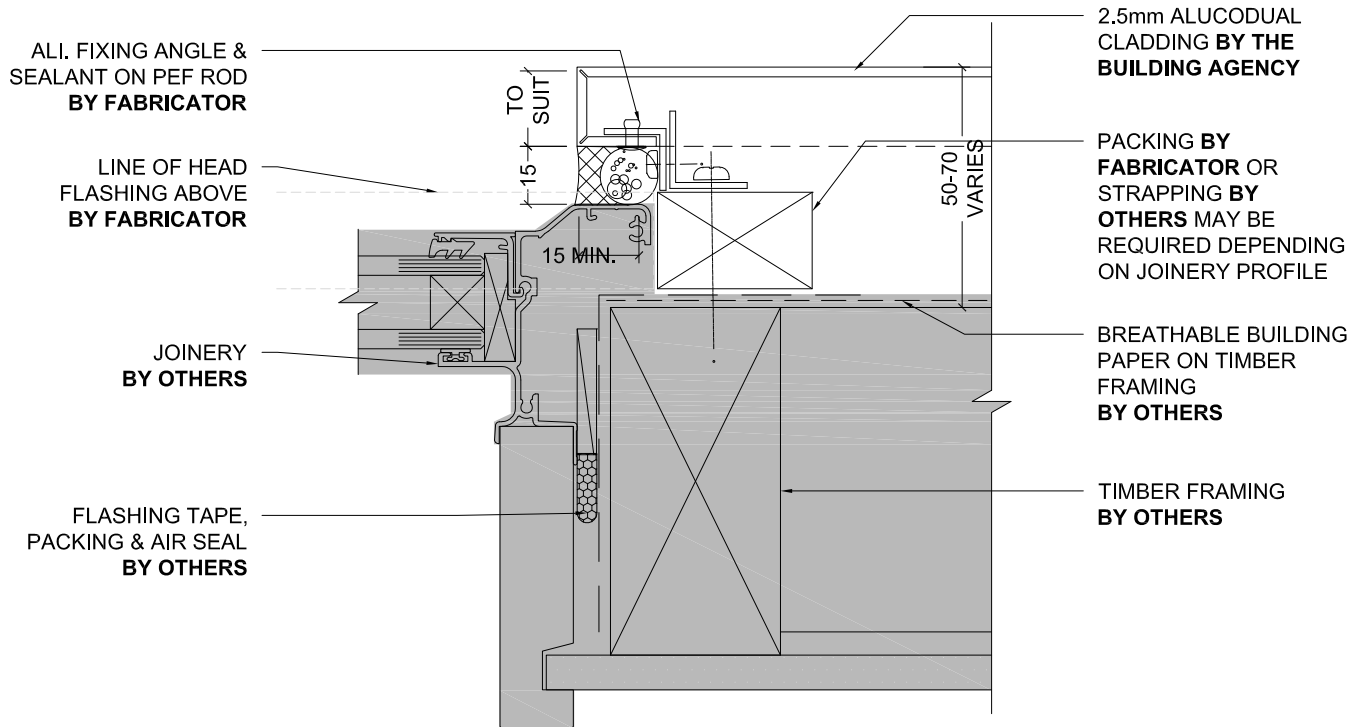
Version

3.1.1

[v1.0]



MATERIALS • SYSTEMS • SOLUTIONS



WINDOW JAMB RESIDENTIAL JOINERY

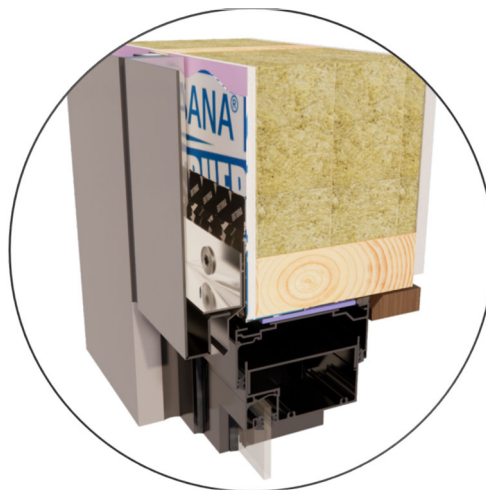
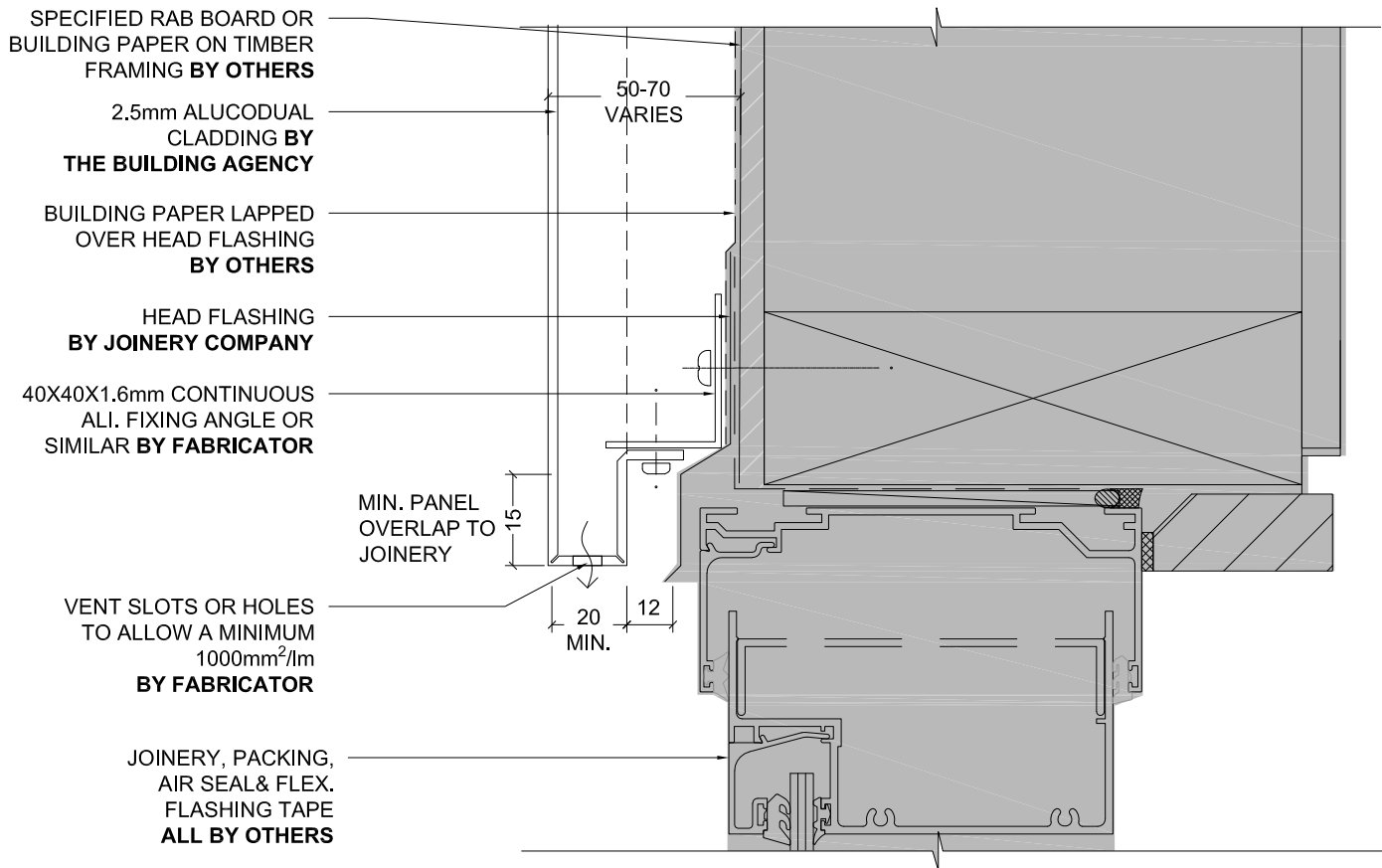
Detail Number

Version

[v1.0]



MATERIALS • SYSTEMS • SOLUTIONS



WINDOW HEAD COMMERCIAL JOINERY

Detail Number

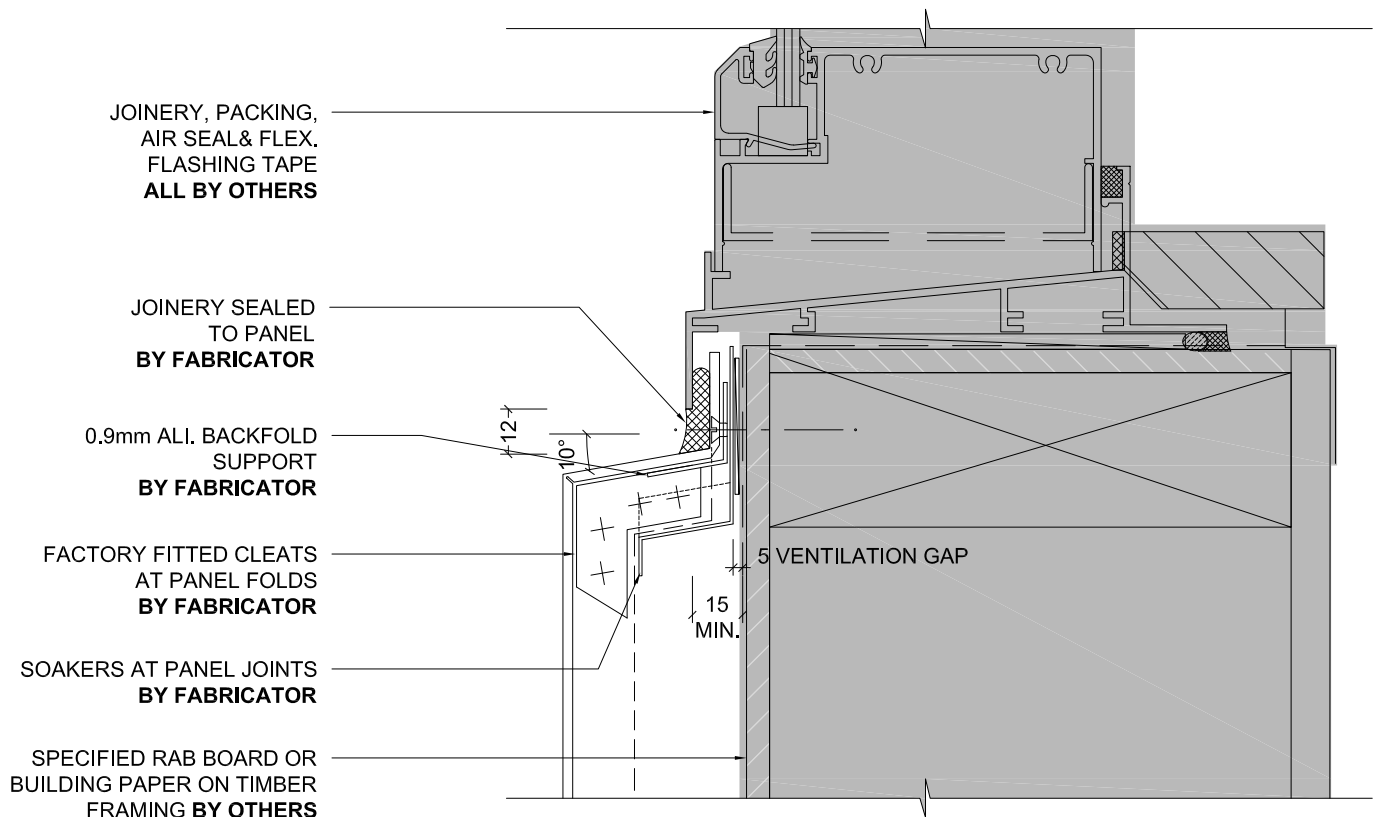
Version

3.2.0

[v1.0]



MATERIALS • SYSTEMS • SOLUTIONS



NOTE

IMPORTANT: ENSURE 15MM MIN CLEARANCE
FROM INSIDE OF SILL TRAY TO FLASHING TAPE,
FOR PANEL UPSTAND



WINDOW SILL COMMERCIAL JOINERY

Detail Number

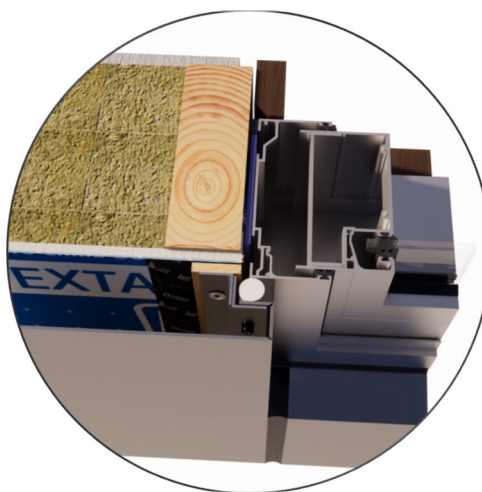
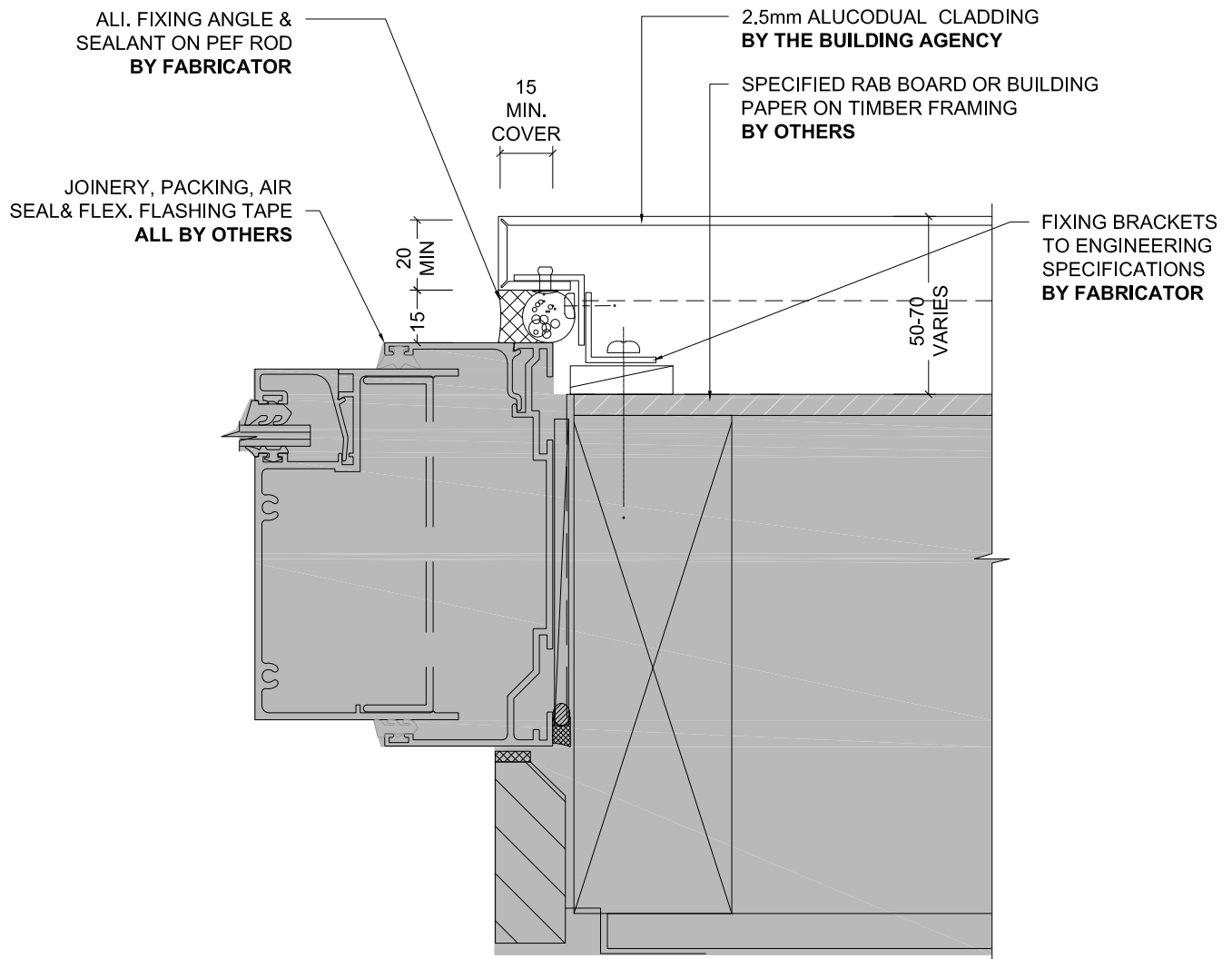
Version

3.2.1

[v1.0]



MATERIALS • SYSTEMS • SOLUTIONS

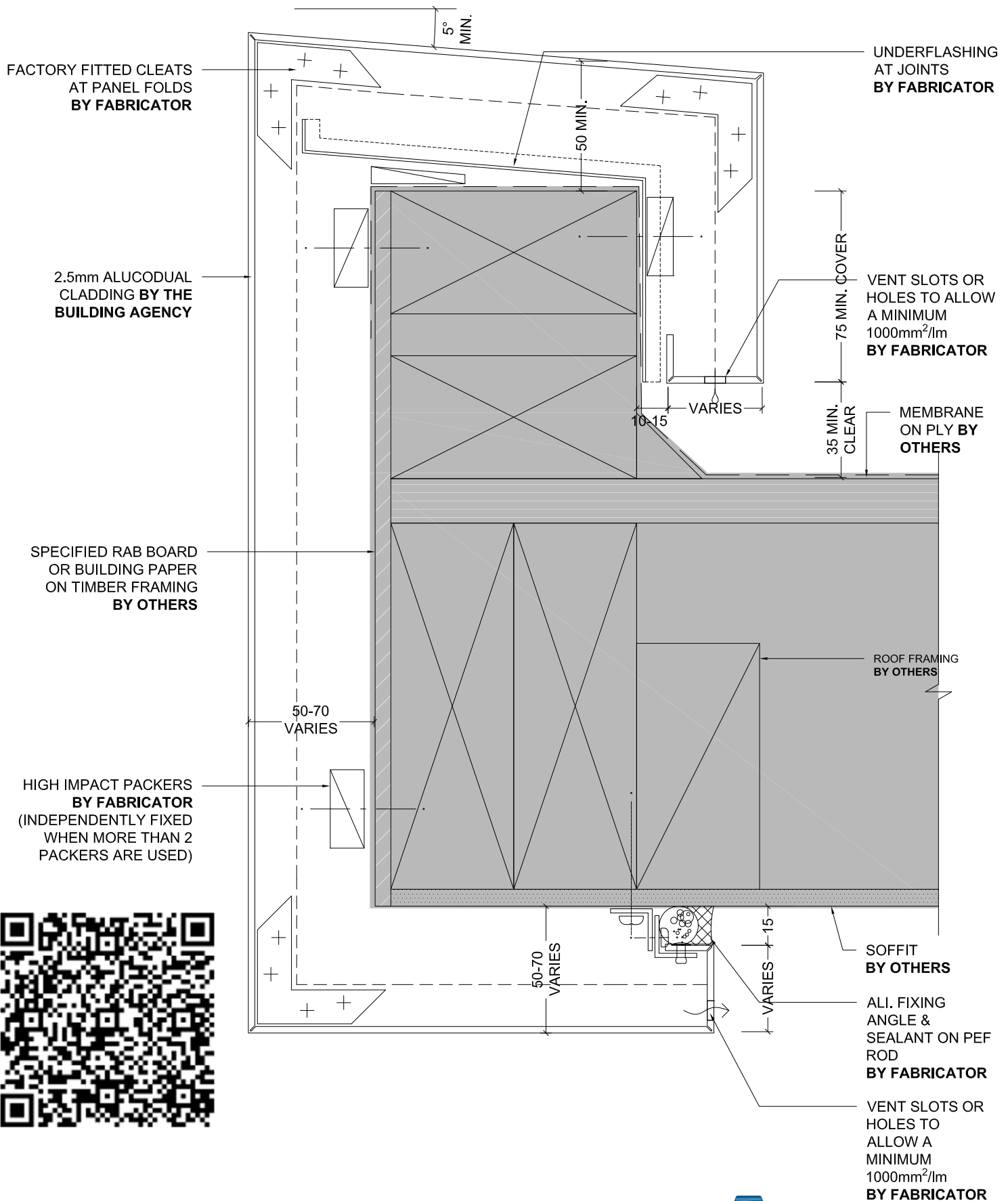


WINDOW JAMB COMMERCIAL JOINERY

Detail Number _____
Version _____
3.2.2
[v1.0]



MATERIALS • SYSTEMS • SOLUTIONS



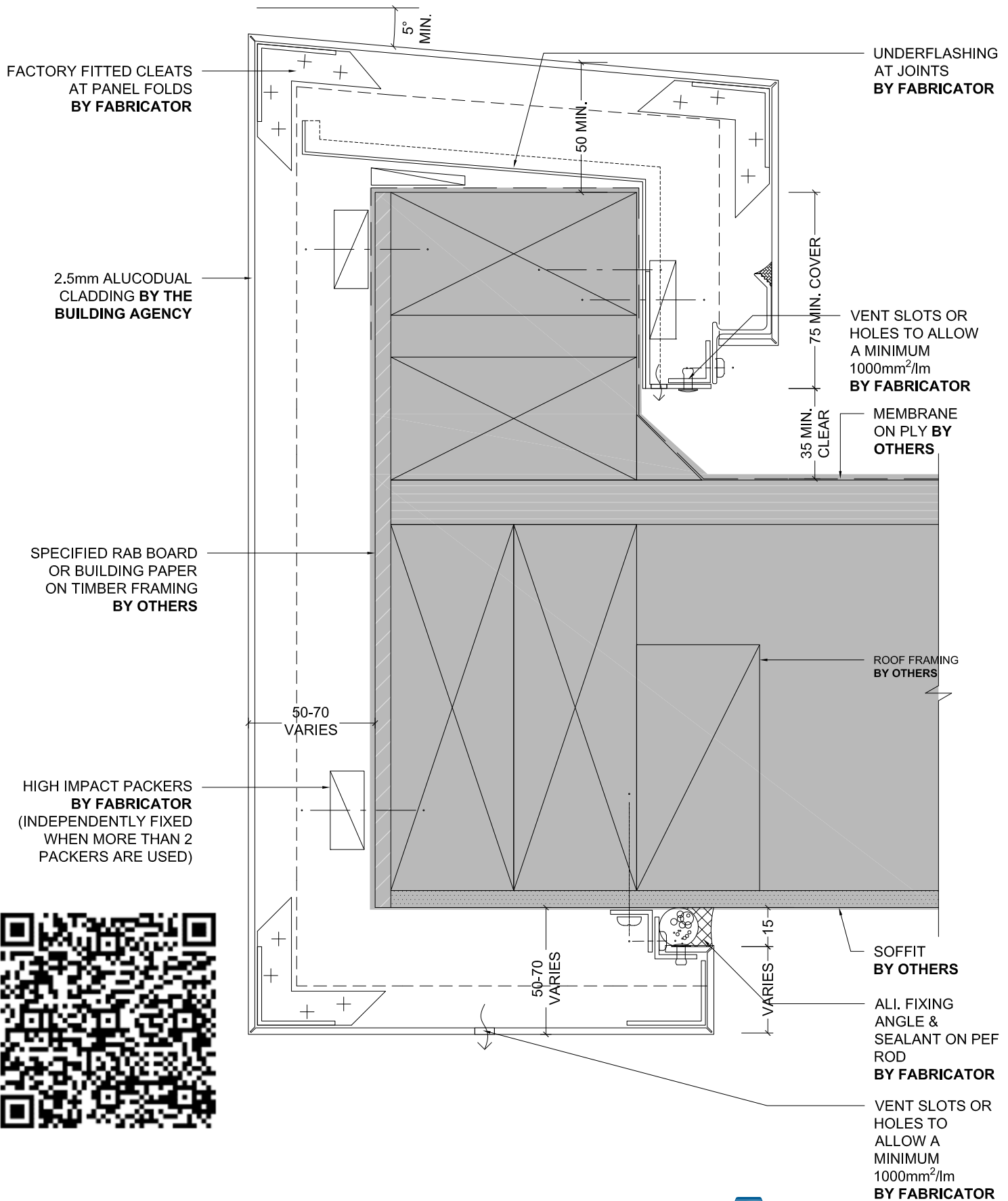
**FASCIA - SOFFIT
BY OTHERS AT
LOW WIND ZONE**

Detail Number

4.0

Version

[v1.0]



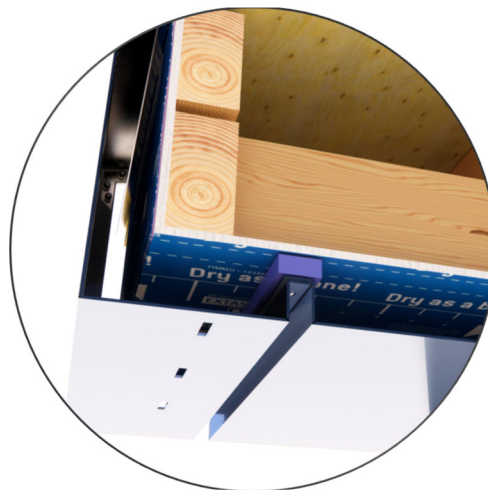
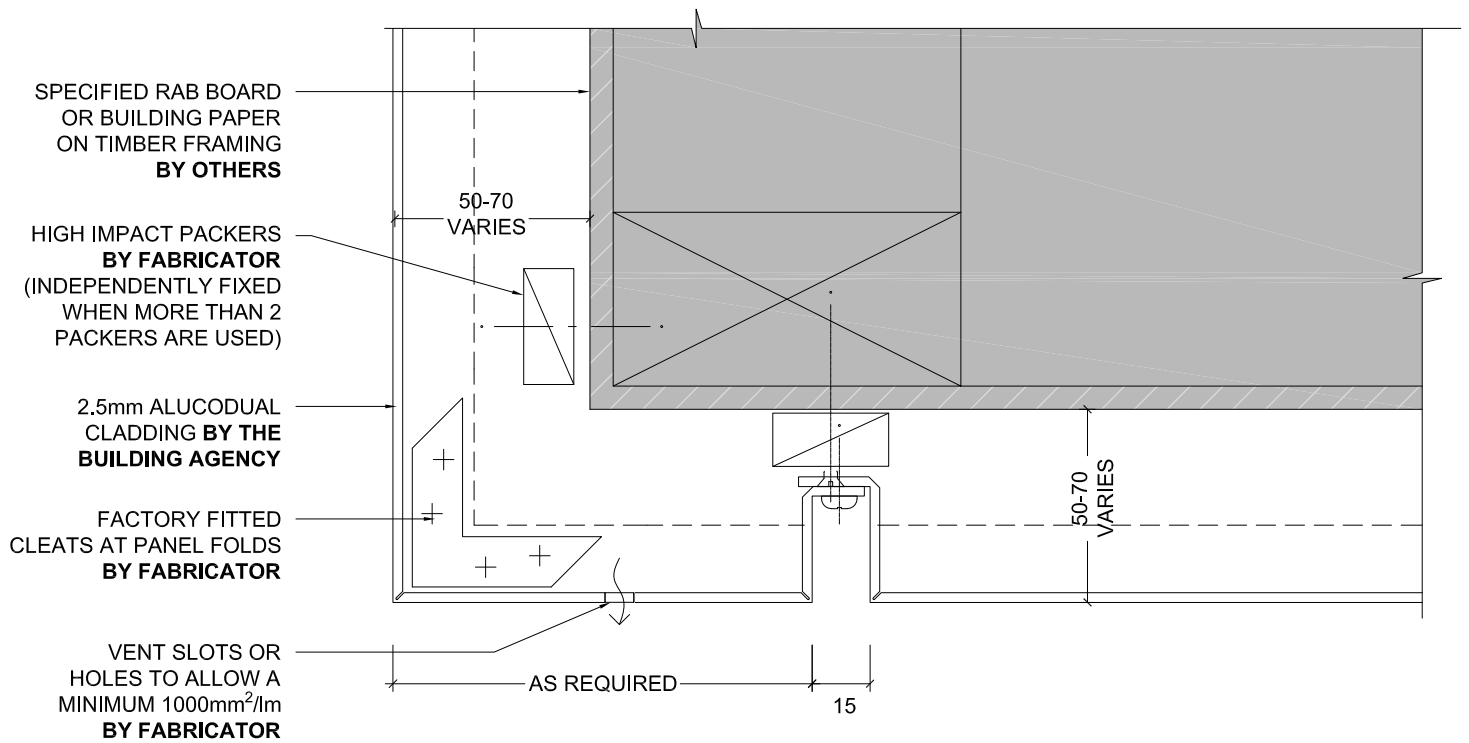
**FASCIA - SOFFIT
BY OTHERS AT
HIGH WIND ZONE**

Detail Number

4.1

Version

[v1.0]



**SOLID ALUMINIUM
FASCIA TO
SOFFIT**

Detail Number

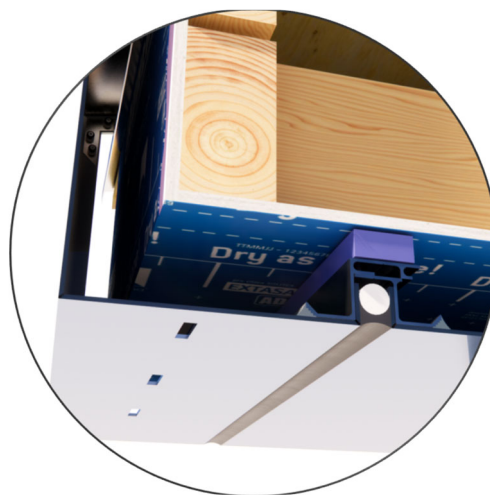
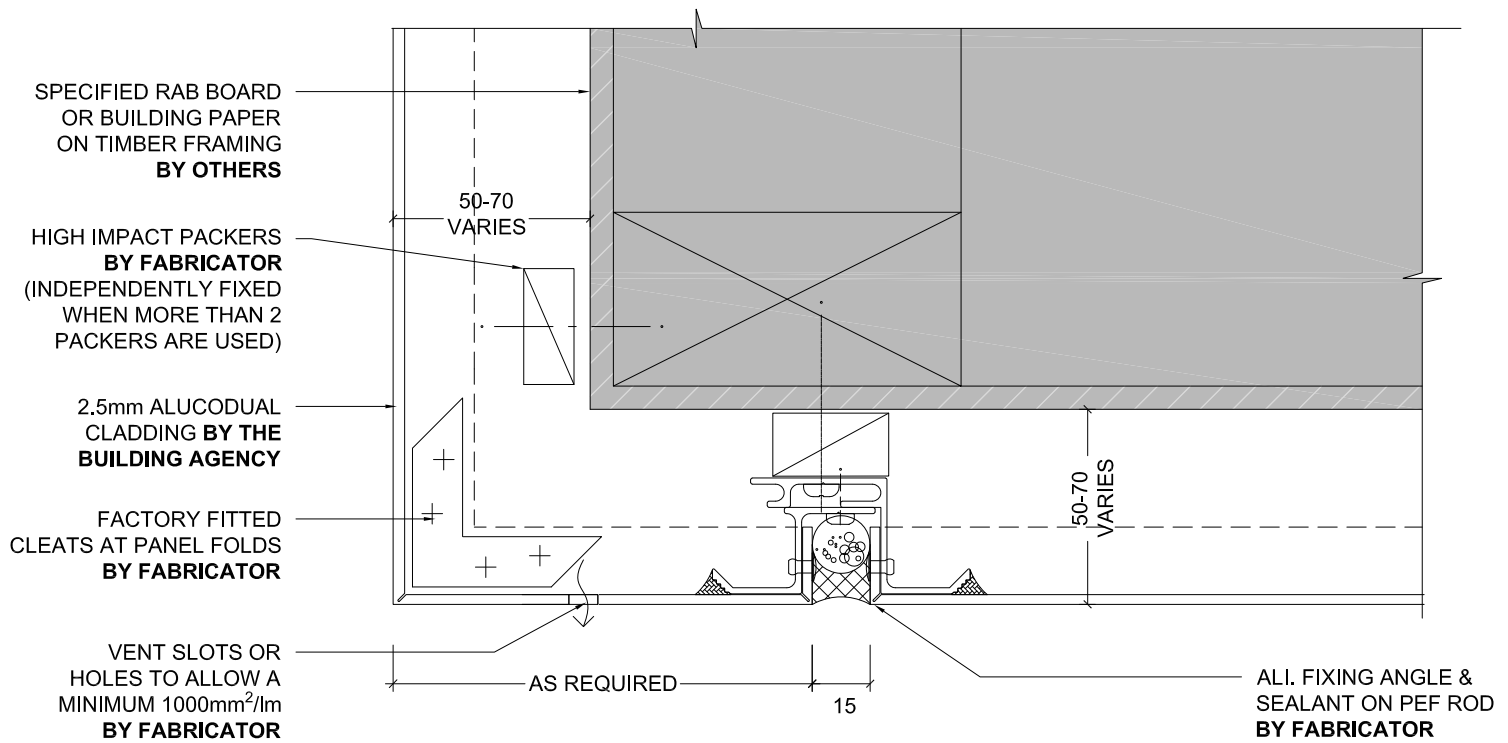
Version

4.2.0

[v1.0]

**THE
BUILDING
AGENCY**

MATERIALS • SYSTEMS • SOLUTIONS



**SOLID ALUMINIUM
FASCIA TO
SOFFIT OP.2**

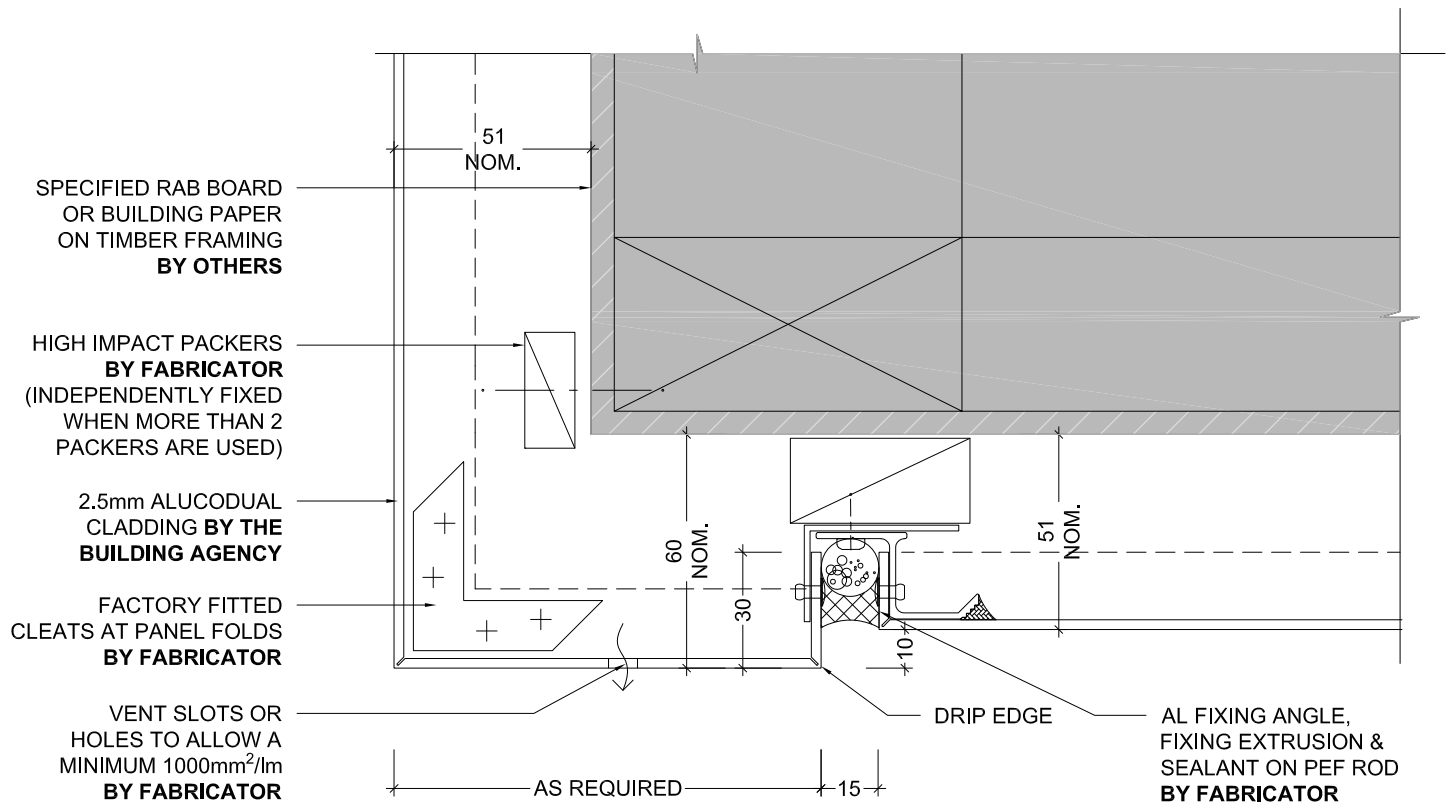
Detail Number

Version

4.2.1
[v1.0]

THE BUILDING AGENCY

MATERIALS • SYSTEMS • SOLUTIONS



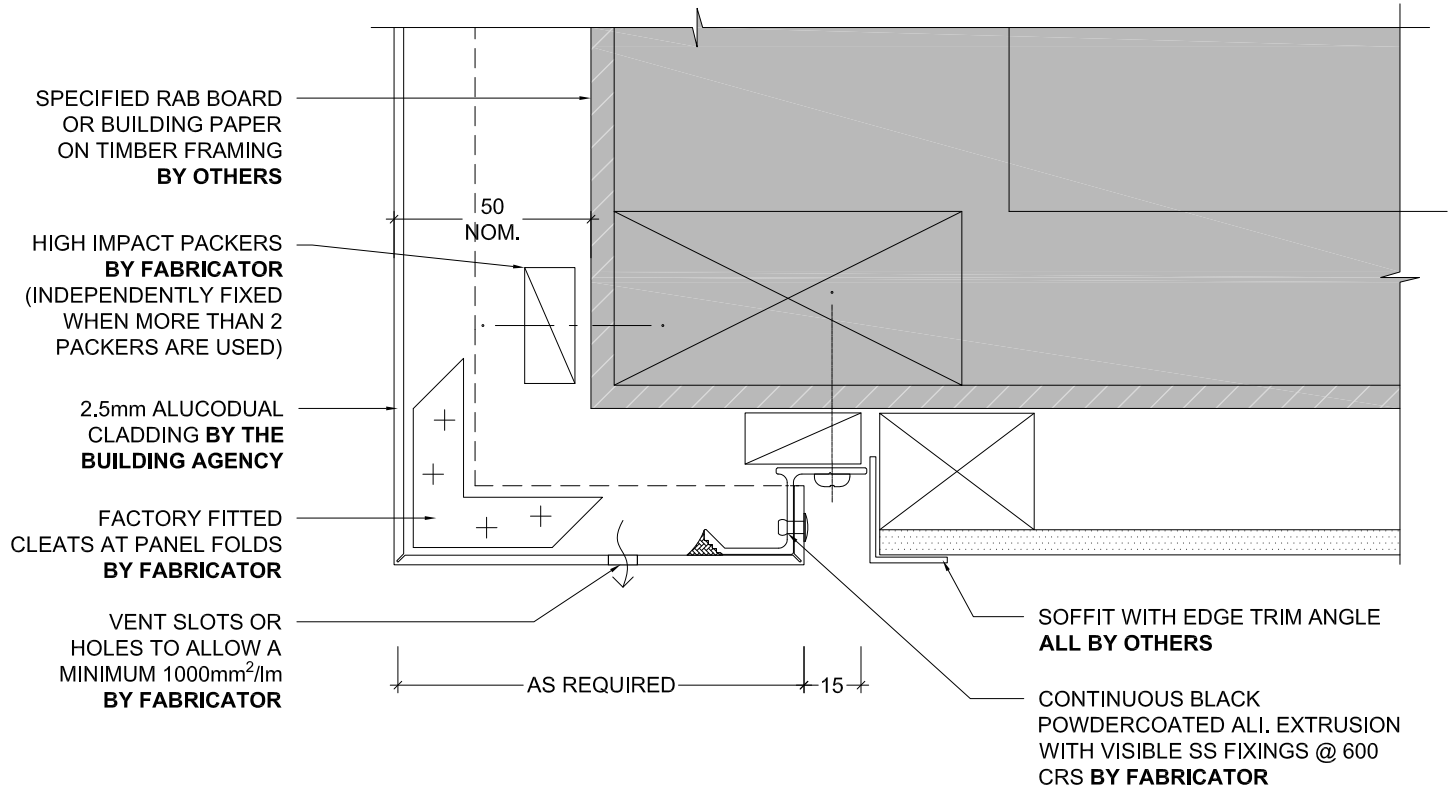
DRIP EDGE DETAIL

Detail Number

Version

4.3.0

[v1.0]



OPEN FLUSH SOFFIT JOINT

Detail Number

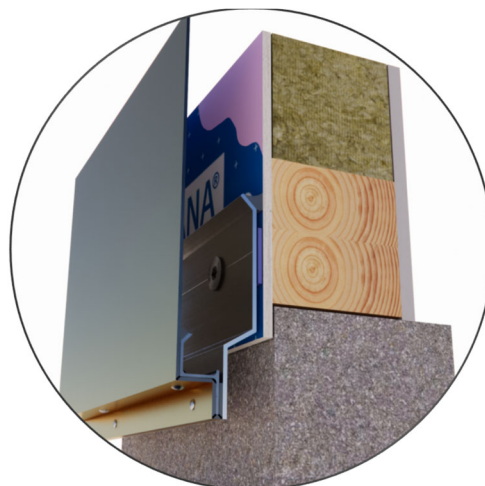
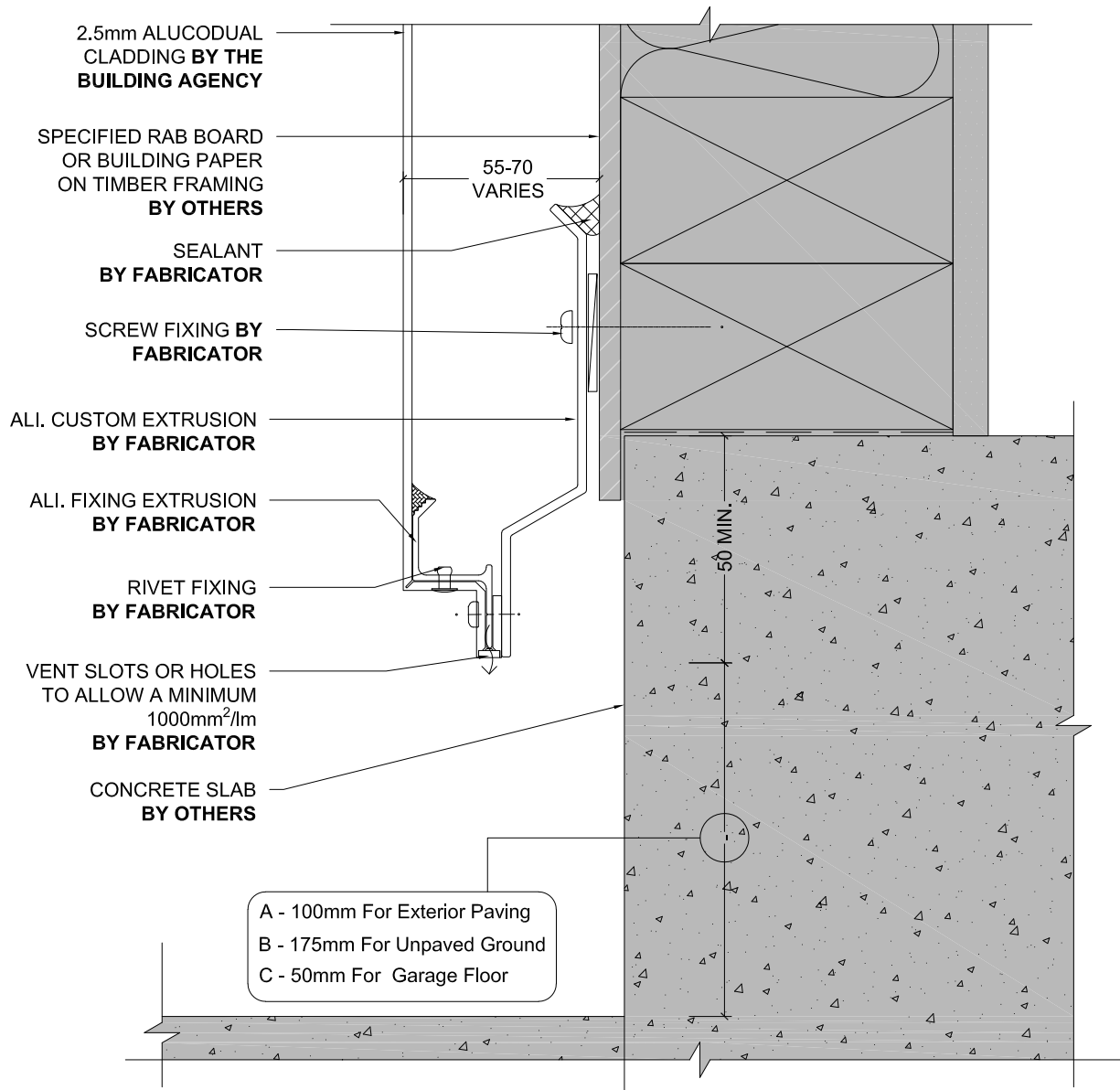
Version

4.3.1

[v1.0]



MATERIALS • SYSTEMS • SOLUTIONS



BASE
DETAIL

Detail Number

Version

5.0

[v1.0]

THE BUILDING AGENCY

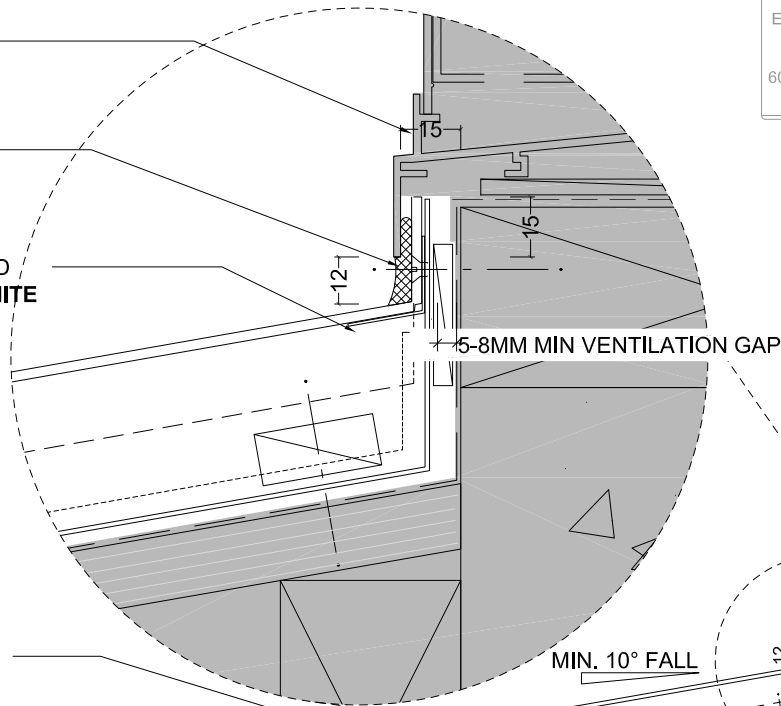
MATERIALS • SYSTEMS • SOLUTIONS

JOINERY, PACKING,
AIR SEAL **ALL BY**
OTHERS

PANEL SEALED TO
SILL TRAY **BY**
SYMONITE

0.9MM ALI. BACKFOLD
SUPPORT **BY SYMONITE**

NOTE
ENSURE 15MM MIN CLEARANCE AT SILL TRAY
FOR PANEL UPSTAND
60MM MIN CLEARANCE FROM BOTTOM OF SILL
TRAY LEF TO FRAMING BELOW



UNDERFLASHING @
PANEL JOINTS
BY FABRICATOR

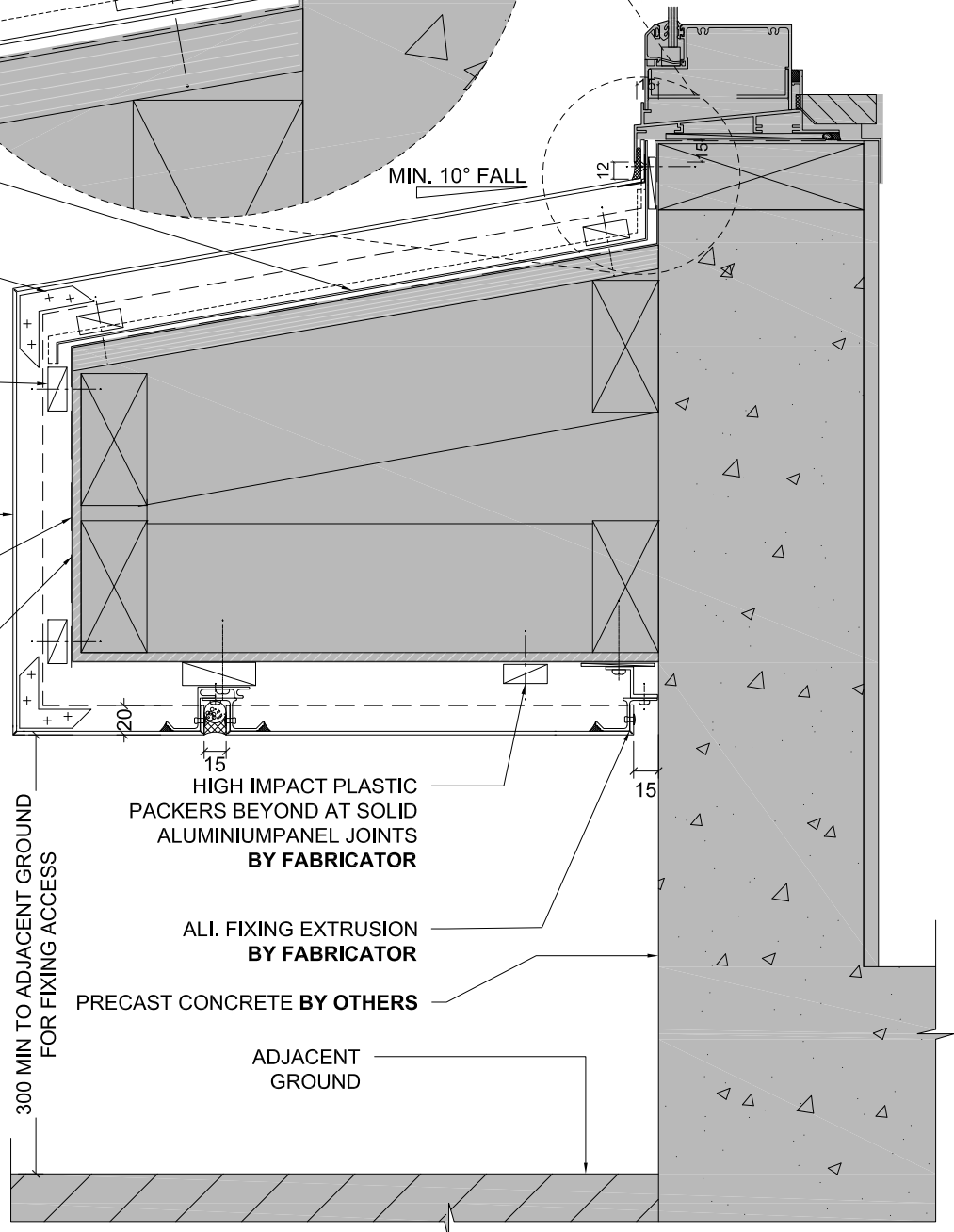
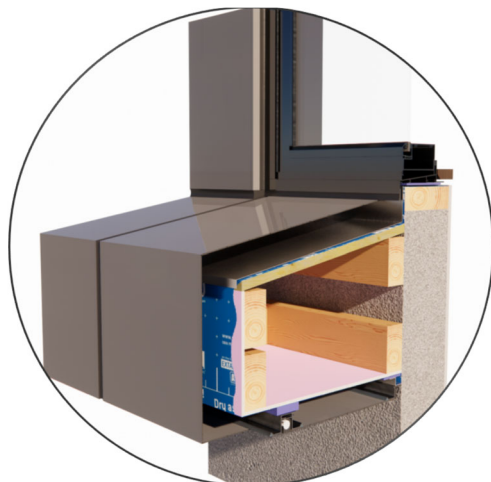
FACTORY FITTED CLEATS
AT PANEL FOLDS
BY FABRICATOR

HIGH IMPACT PACKERS
BY FABRICATOR
(INDEPENDENTLY FIXED WHEN
MORE THAN 2 PACKERS ARE
USED)

2.5mm ALUCODUAL
CLADDING **BY THE**
BUILDING AGENCY

SPECIFIED RAB BOARD
OR BUILDING PAPER
OVER TIMBER FRAMING
BY OTHERS

SELECTED MEMBRANE
BY OTHERS



EYEBROW SILL DETAIL

Detail Number

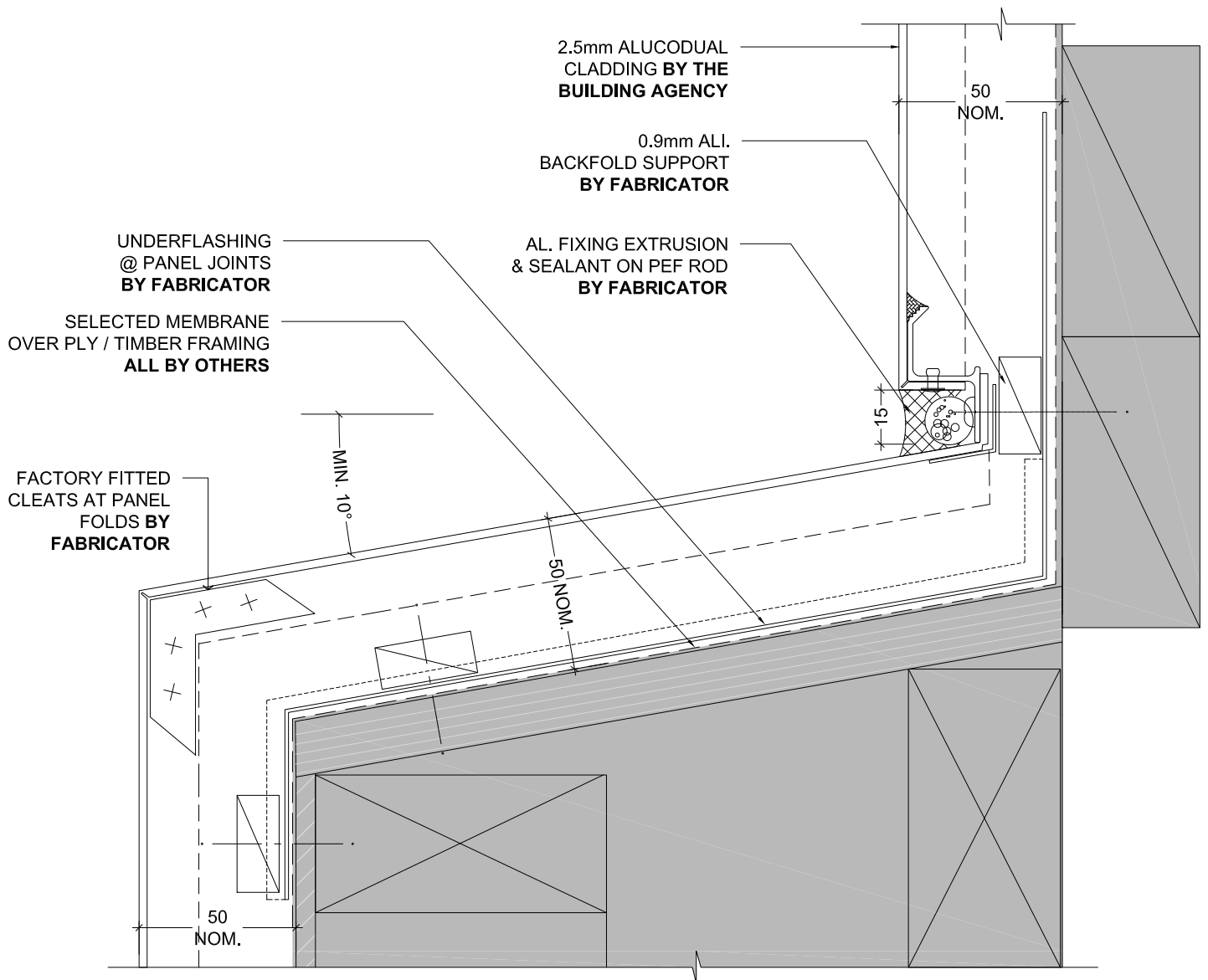
5.1

Version

[v1.0]

**THE
BUILDING
AGENCY**

MATERIALS • SYSTEMS • SOLUTIONS



UPSTAND DETAIL

Detail Number

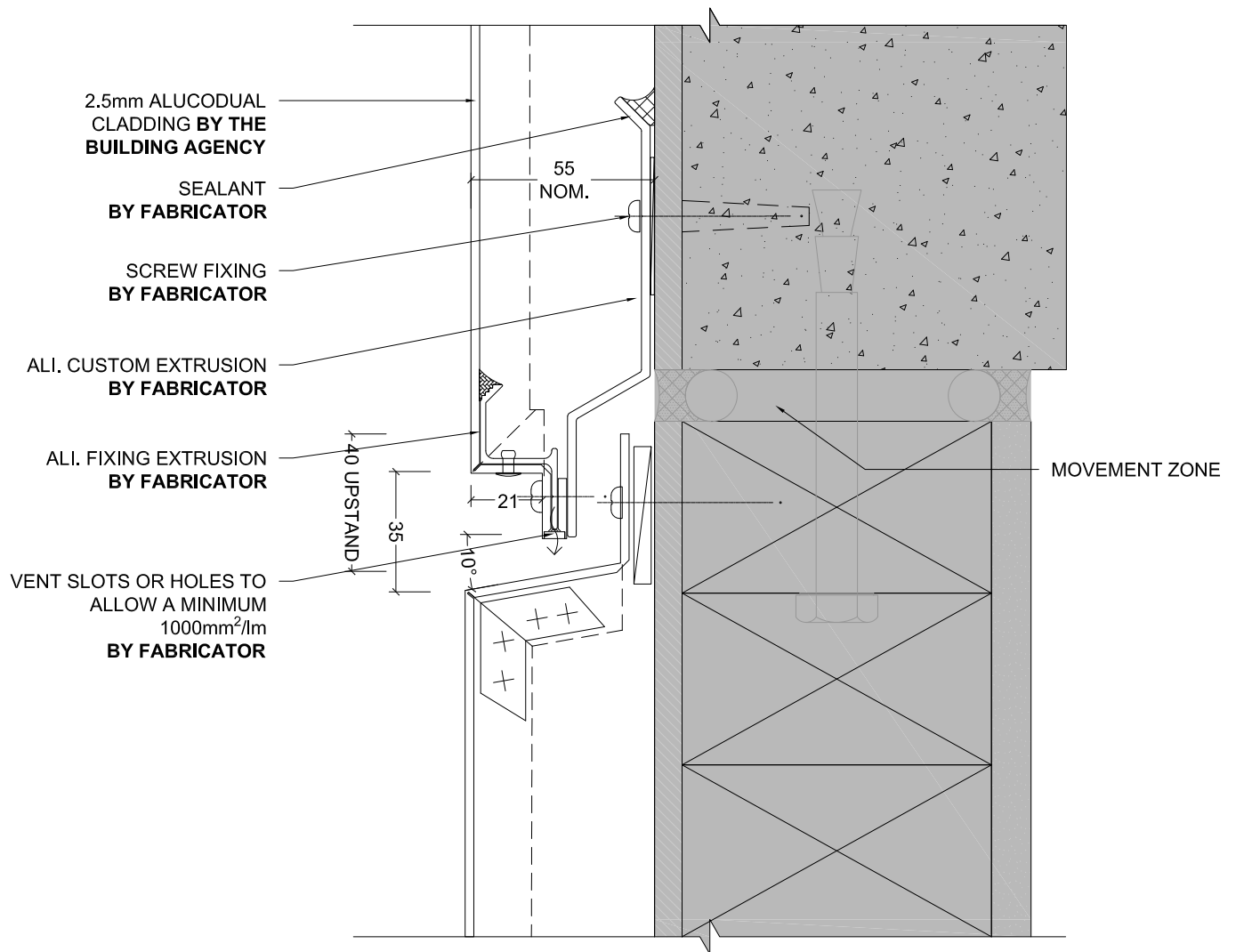
5.2

Version

[v1.0]

THE BUILDING AGENCY

MATERIALS • SYSTEMS • SOLUTIONS



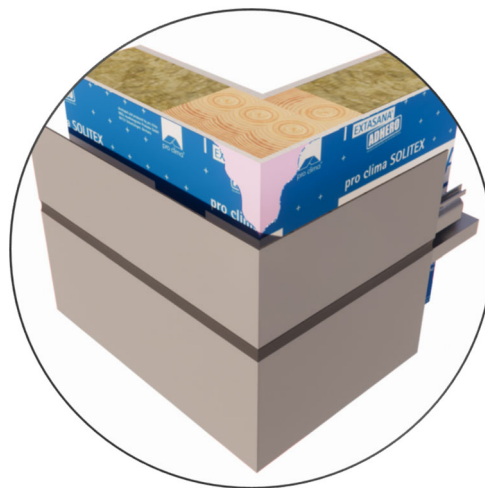
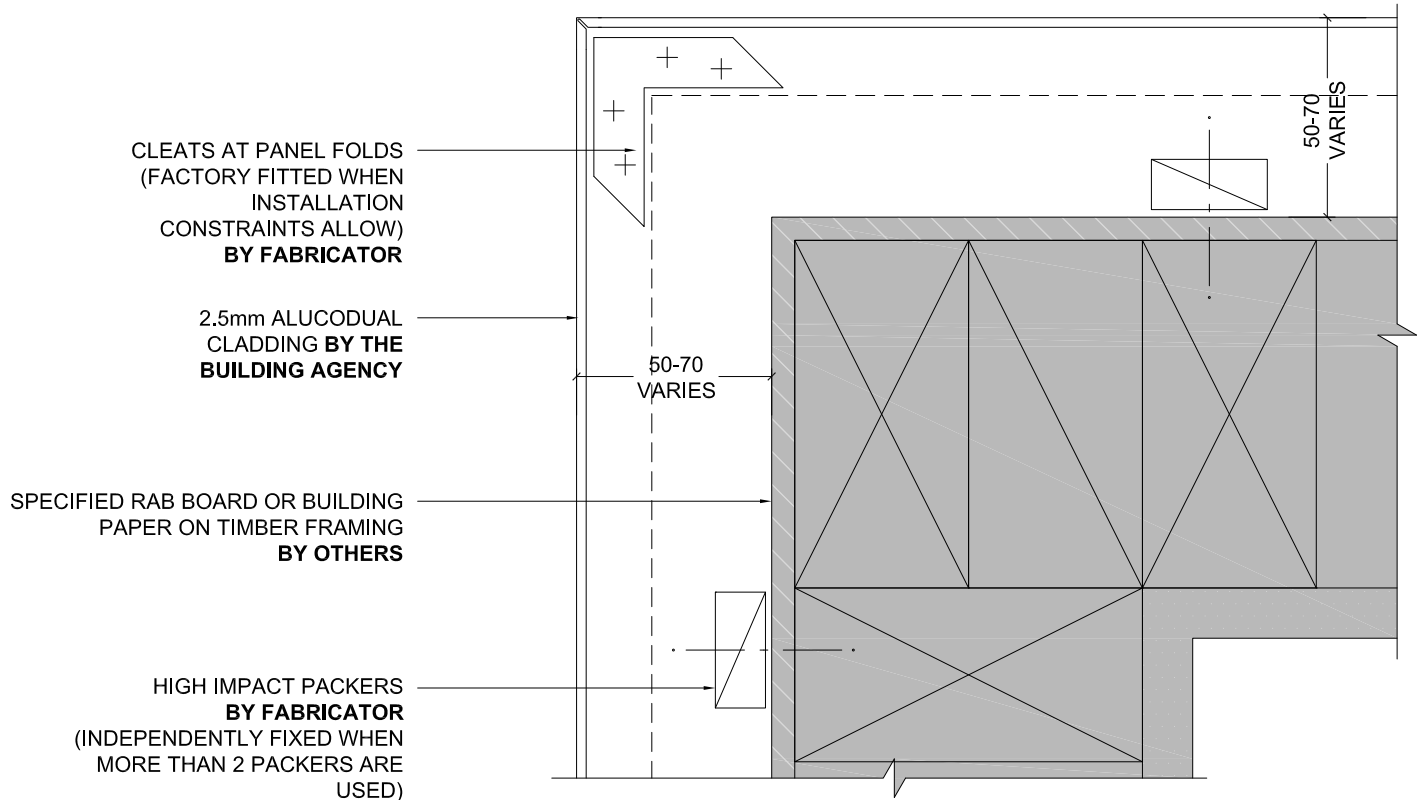
INTER - STOREY JOINT

Detail Number

5.3

Version

[v1.0]



EXTERNAL CORNER

Detail Number

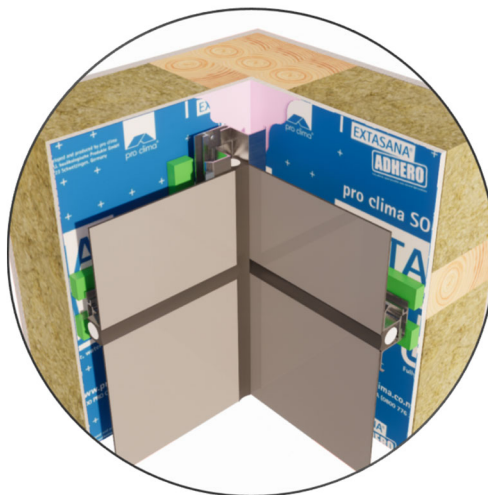
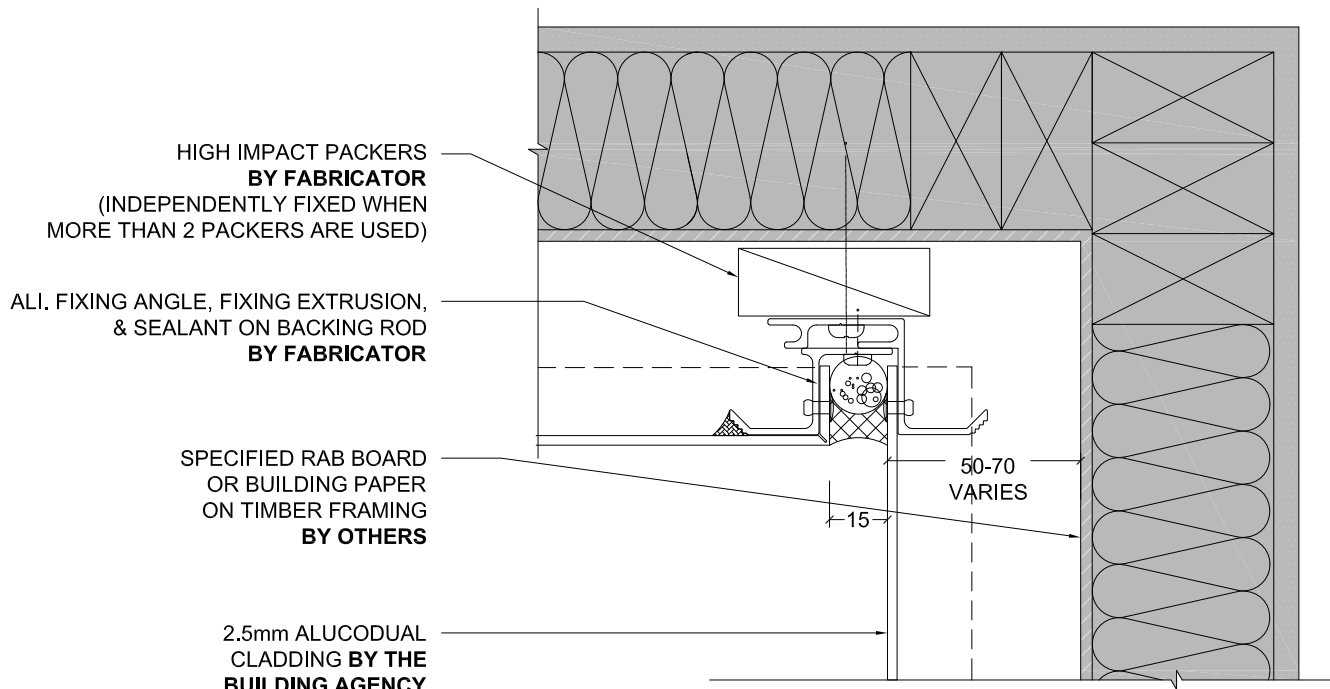
6.0

Version

[v1.0]

**THE
BUILDING
AGENCY**

MATERIALS • SYSTEMS • SOLUTIONS



INTERNAL CORNER

Detail Number

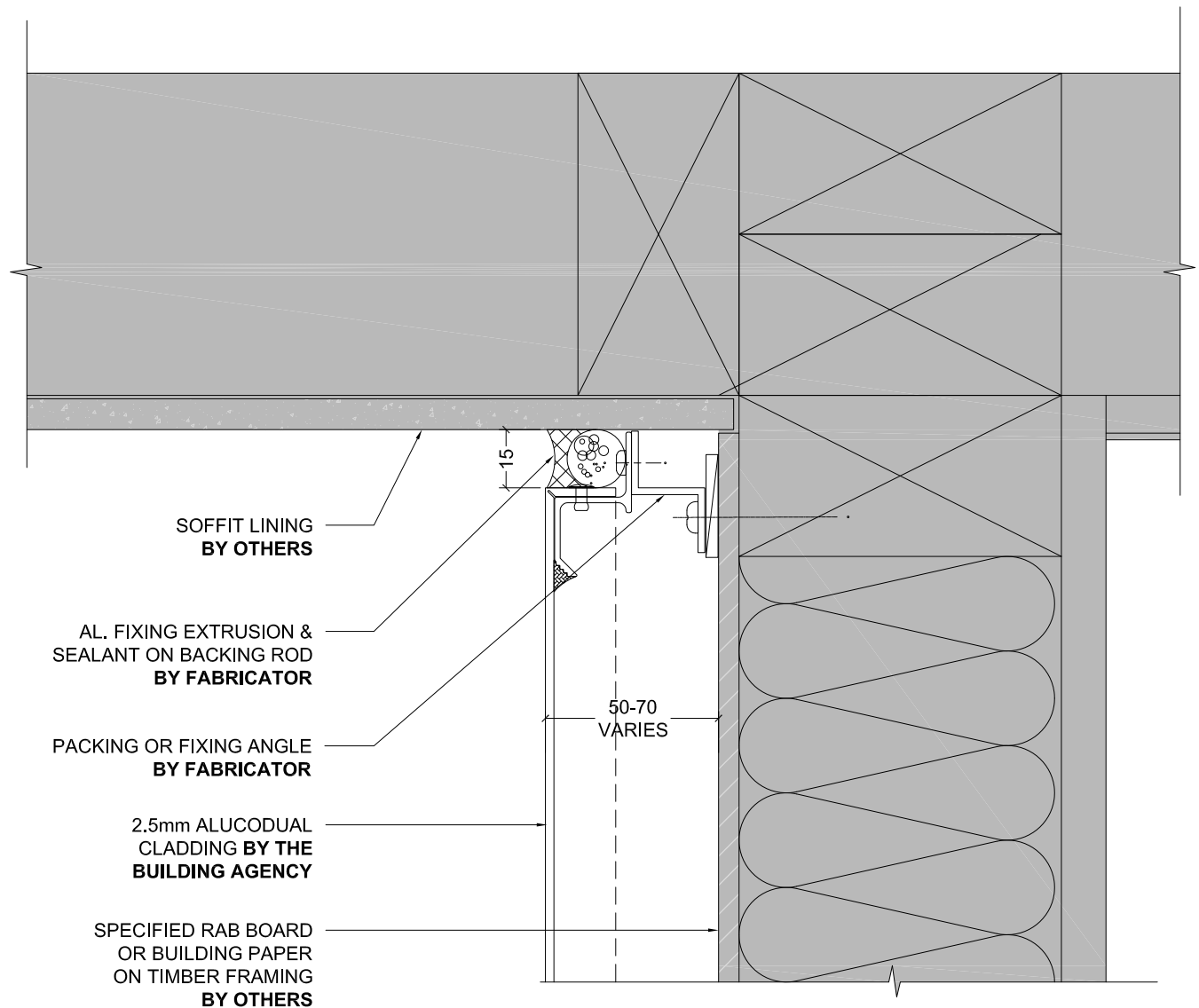
Version

6.1

[v1.0]

THE BUILDING AGENCY

MATERIALS • SYSTEMS • SOLUTIONS



WALL TO SOFFIT JUNCTION OP 1

Detail Number

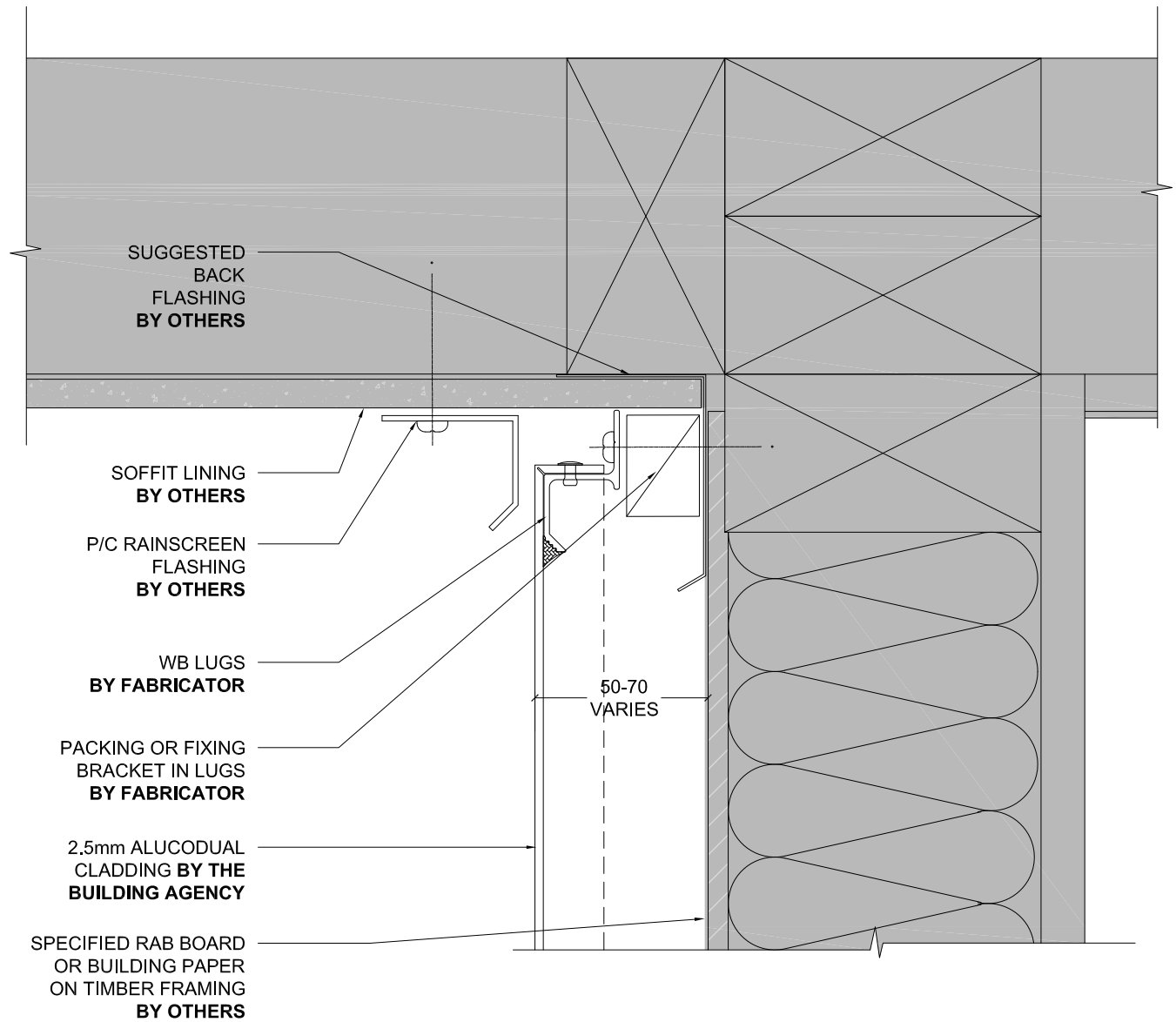
7.0

Version

[v1.0]



MATERIALS • SYSTEMS • SOLUTIONS



WALL TO SOFFIT JUNCTION OP 2

Detail Number

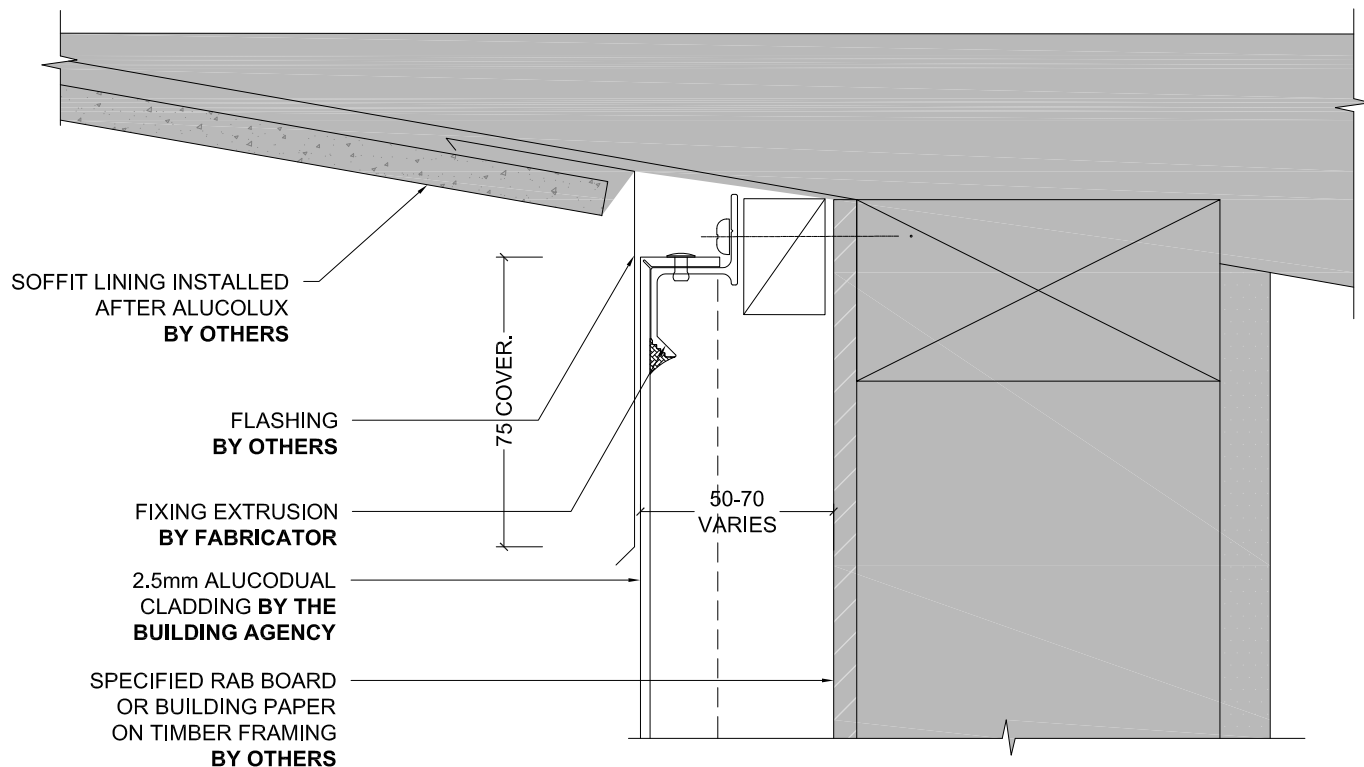
7.1

Version

[v1.0]



MATERIALS • SYSTEMS • SOLUTIONS



WALL TO RAKING SOFFIT JUNCTION OP 1

Detail Number

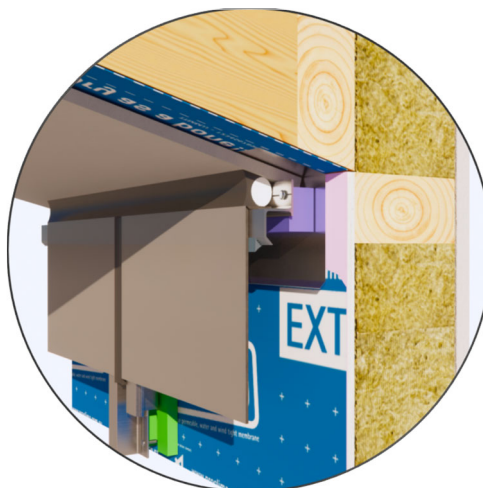
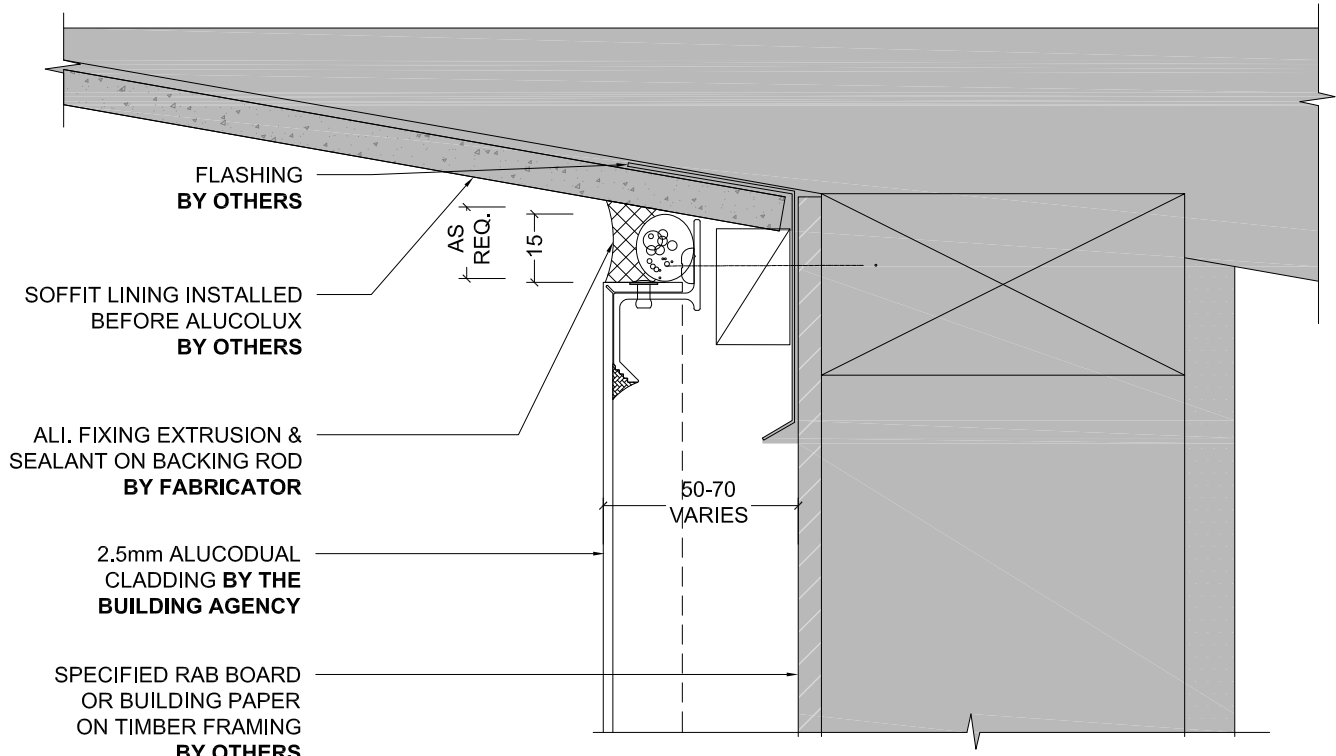
Version

7.2.0

[v1.0]



MATERIALS • SYSTEMS • SOLUTIONS



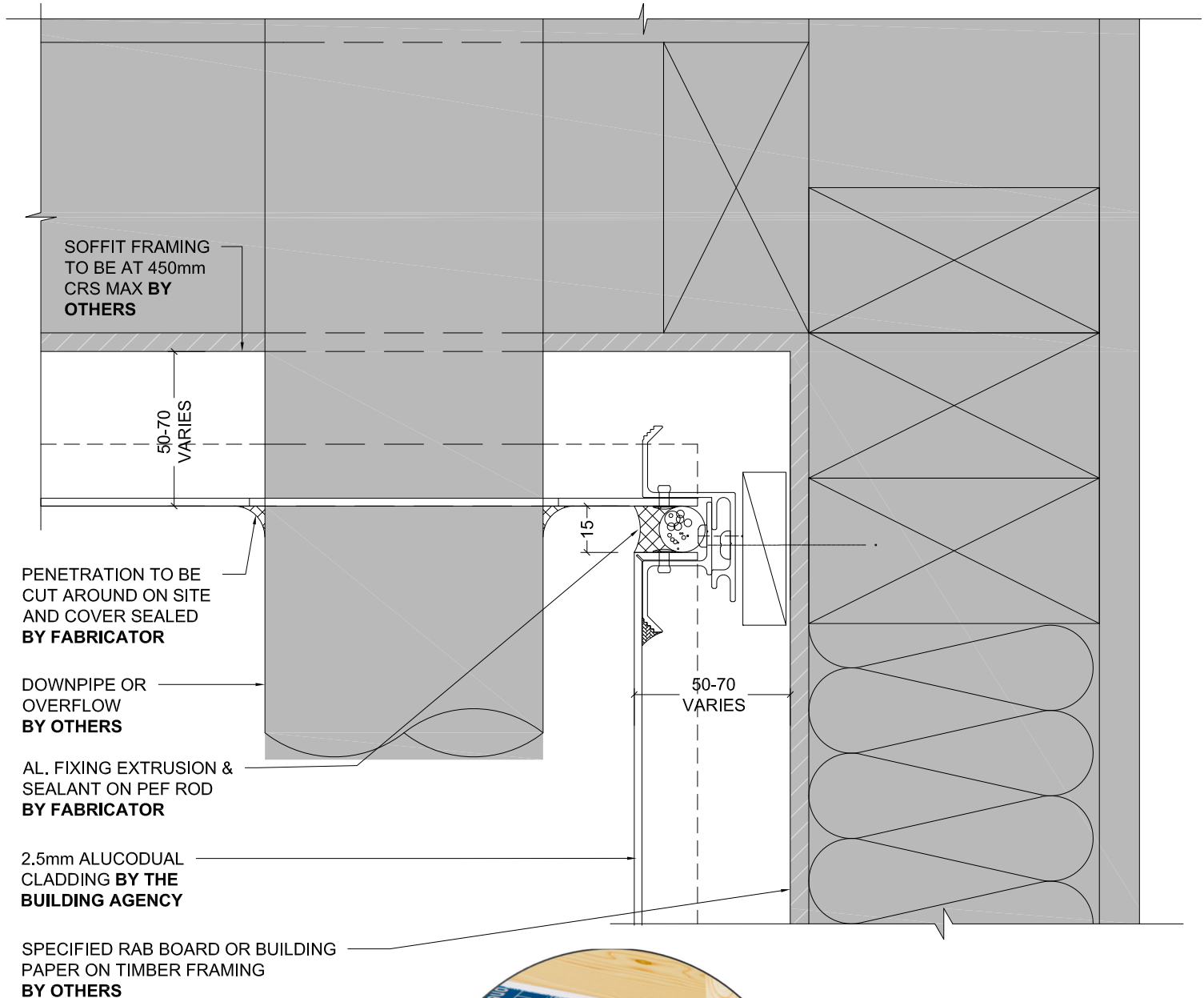
WALL TO RAKING SOFFIT JUNCTION OP 2

Detail Number

Version

7.2.1

[v1.0]



WALL TO SOFFIT & DOWNPIPE PENETRATION

Detail Number

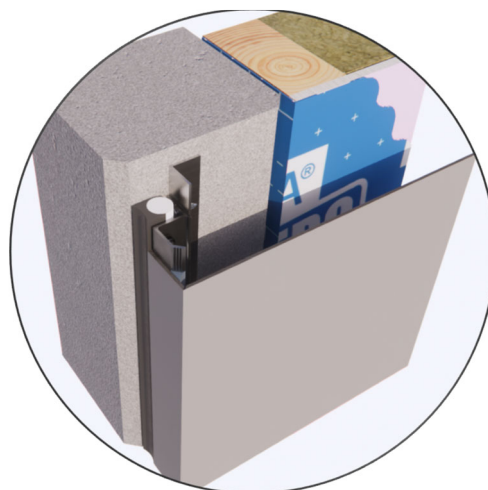
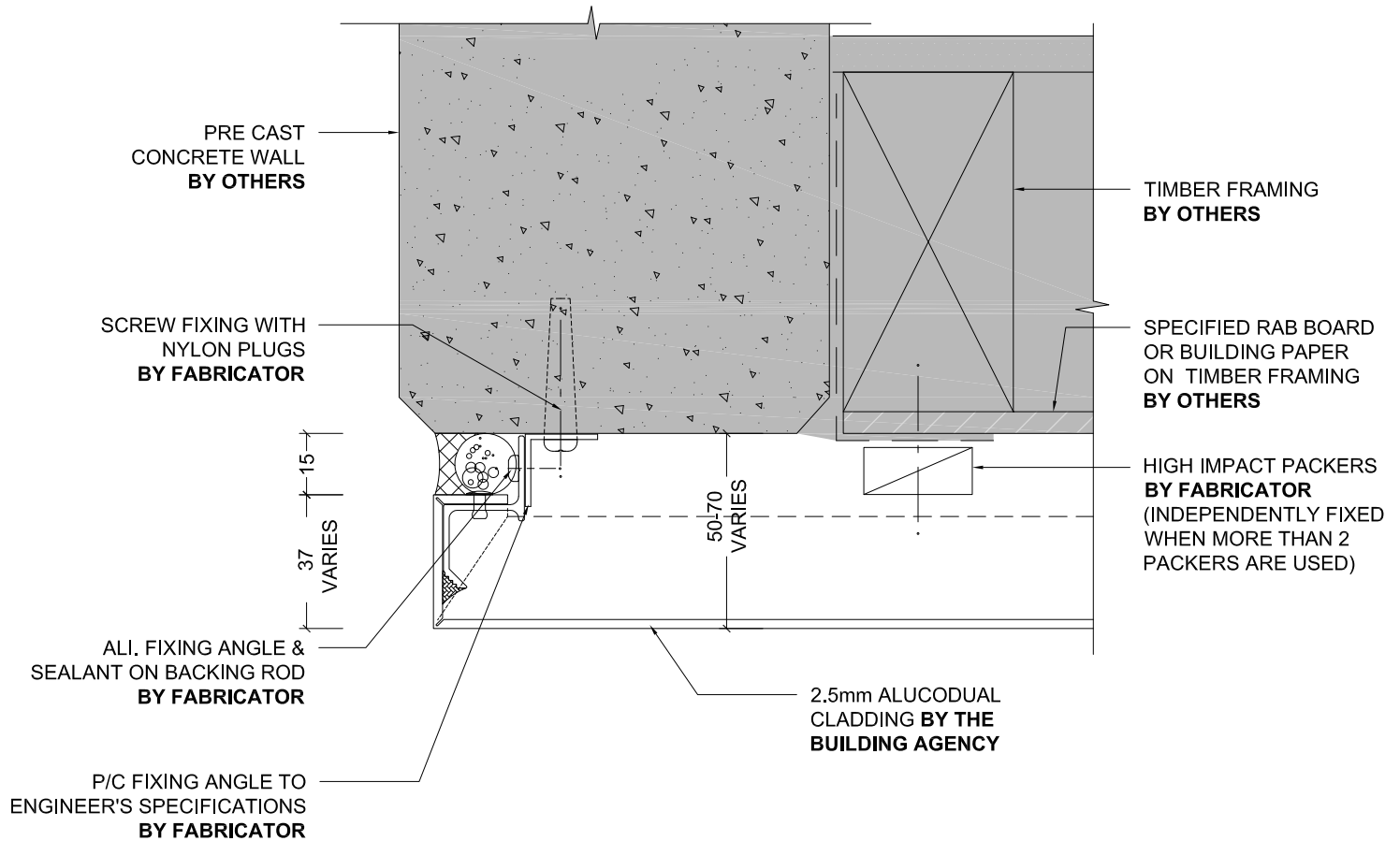
7.3

Version

[v1.0]



MATERIALS • SYSTEMS • SOLUTIONS



PRECAST CONCRETE WALL JUNCTION

Detail Number _____

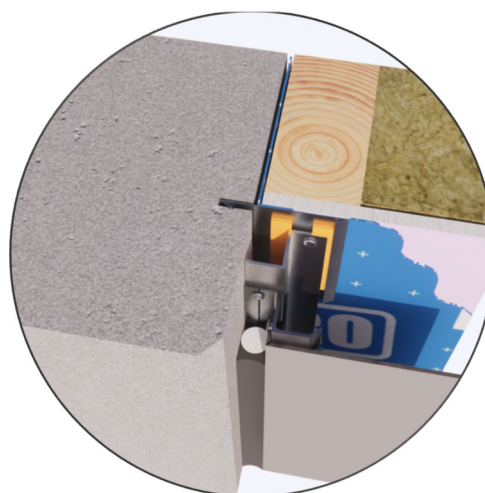
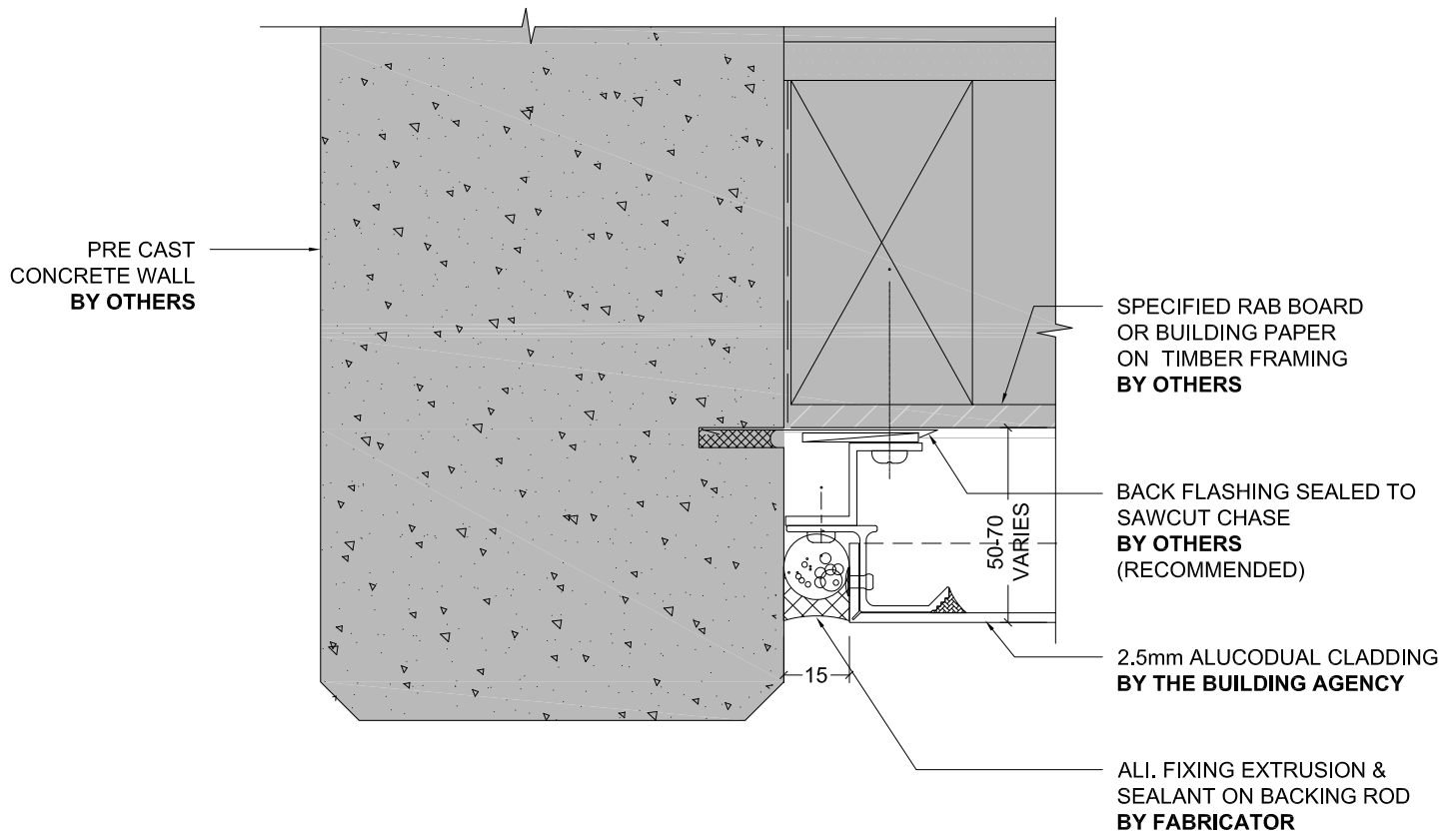
8.0

Version _____

[v1.0]



MATERIALS • SYSTEMS • SOLUTIONS



NOTE

Chased flashing is recommended at all vertical concrete junction details. It is the building designer's responsibility to check with applicable local building authorities as to whether this is required



PRECAST CONCRETE WALL JUNCTION OP 2

Detail Number

8.1

Version

[v1.0]



MATERIALS • SYSTEMS • SOLUTIONS